

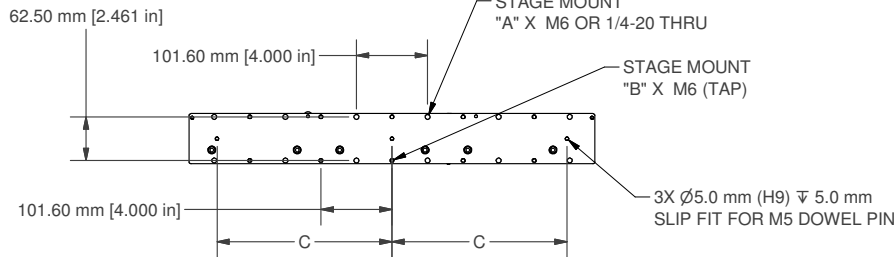
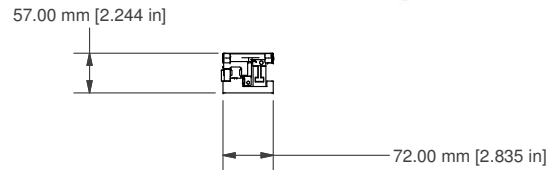
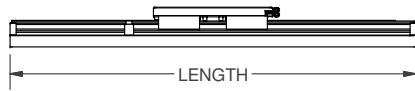
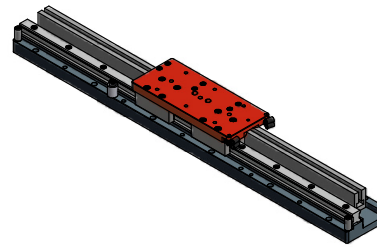
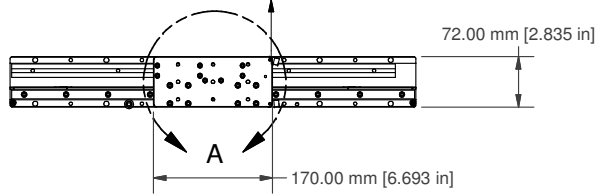
4

3

2

1

MOVING CABLE EXIT
(CONTACT ALIO FOR CABLE TRACK
OPTIONS)



TRAVEL	LENGTH	A (QTY)	B (QTY)	C
100	280	6	4	100
150	330	8	6	125
200	380	8	6	150
250	430	10	8	175
300	480	10	8	200
400	580	12	10	250
500	680	14	12	300
600	780	16	14	350
700	880	18	16	400
800	980	20	18	450
900	1080	22	20	500
1000	1180	24	22	550

* All units millimeters unless otherwise noted.

* All hole patterns centered on M5 dowel pin hole at center of stage.

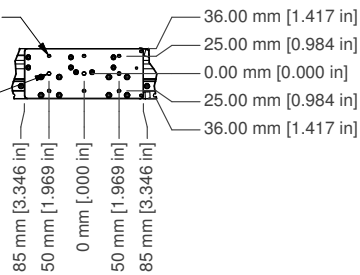
11919 W I-70 FRONTAGE ROAD NORTH, UNIT 119, WHEAT RIDGE, CO 80033 USA
(Tel) 303.339.7500 - SALES@ALIOINDUSTRIES.COM - WWW.ALIOINDUSTRIES.COM



AI-LM-(TRAVEL)00-μII-SN

DRAWN NBROWN	1/21/2011	TITLE	
CHECKED		AI-LM-(TRAVEL)00-μII-SN	
Tolerances: Surface Roughness: x.x ± .05 in [1.3 mm] x.xx ± .01 in [0.25 mm] x.xxx ± .005 in [0.13 mm] Angles ± 0.5°		SIZE B	REV 002
MATERIAL FINISH SEE NOTES		DWG NO 0010-08052	ALIO STD TEMPLATE - REV 006
SCALE	SHEET 1 OF 1		

DETAIL A



NOTE: ALL SIZES CAN BE ORDERED AS
STACKED OR GANTRY XY CONFIGURATIONS.

NOTE: MODEL AI-LM-40000-UII-SN SHOWN.

4

3

2

1