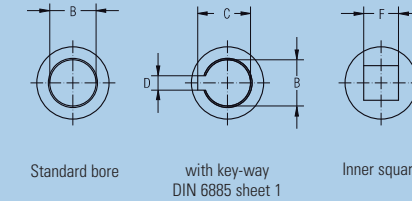
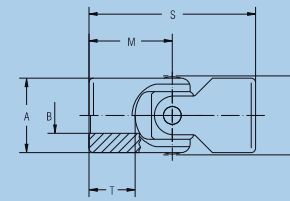
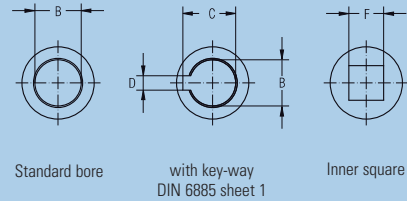
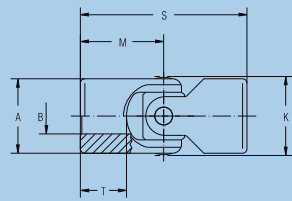


single, Short version, DIN 808



Cross Joints, single, Short version, Standard bore

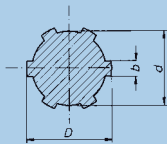
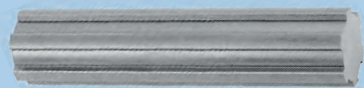
Cross Joints, single, Short vers., Bore with key-way DIN 6885, Sheet 1

Cross Joints, single, Short version, Inner square

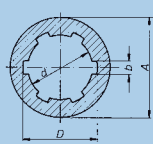
Order number	0.716.410	0.716.411	0.720.410	0.725.410	0.732.410	0.740.410	0.750.410	0.763.410	0.716.413	0.720.413
Md _{max} Nm	8	8	20	30	60	160	290	450	8	20
Angle of deflection β °	45	45	45	45	45	45	45	45	45	45
Weight kg	0,02	0,03	0,07	0,10	0,22	0,42	0,80	2,12	0,03	0,07
A mm	16	16	20	25	32	40	50	63	16	20
*B ^{H7} mm	6	8	10	12	16	20	25	32	8	10
*C ^{+0.2} mm	–	–	–	–	–	–	–	–	9	11,4
*D ^{F9} mm	–	–	–	–	–	–	–	–	2	3
*E ^{H9} mm	–	–	–	–	–	–	–	–	–	–
K mm	17,5	17,5	21,5	26,5	33,5	42	52,5	65	17,5	21,5
M mm	17	20	24	28	34	41	52,5	65	20	24
S mm	34	40	48	56	68	82	105	130	40	48
T mm	9	11	13	15	19	21**	28**	36	11	13

0.725.413	0.732.413	0.740.413	0.750.413	0.763.413	0.716.414	0.720.414	0.725.414	0.732.414	0.740.414	0.750.414	0.763.414
30	60	160	290	450	8	20	30	60	160	290	450
45	45	45	45	45	45	45	45	45	45	45	45
0,10	0,22	0,42	0,80	2,12	0,03	0,07	0,10	0,22	0,42	0,80	2,12
25	32	40	50	63	16	20	25	32	40	50	63
12	16	20	25	32	–	–	–	–	–	–	–
13,8	18,3	22,8	28,3	35,3	–	–	–	–	–	–	–
4	5	6	8	10	–	–	–	–	–	–	–
–	–	–	–	–	6	8	10	14	19	24	30
26,5	33,5	42	52,5	65	17,5	21,5	26,5	33,5	42	52,5	65
28	34	41	52,5	65	20	24	28	34	41	52,5	65
56	68	82	105	130	40	48	56	68	82	105	130
15	19	21**	28**	36	11	13	15	19	21**	28**	36

* = Customized bores, key-ways and inner square dimensions possible
 ** = Bore depth smaller than DIN 808
 Md_{max} = Max. permissible torque (when using material 1.4057 divide the Md_{max}-value in halves)
 β = Max. angle of deflection per joint
 For application criteria and calculations refer to technical annex



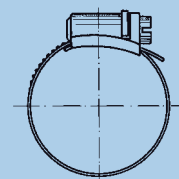
Spline Shafts DIN ISO 14



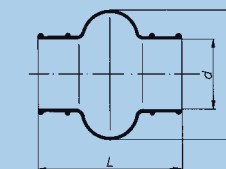
Spline Bore Hubs DIN ISO 14

Material: C40 k, 1.0511 oder C45 k, 1.0503
Material: 35 S 20 k, 1.0726

Material: 11SMnPb 30 k, 1.0718



Material: steel, zinc-plated or stainless steel, corrosion- and acid-resistant



Material: neoprene; temperature-resistant up to 100 °C

Also available with Spigots

Spline Shafts DIN ISO 14

Order number	1.000.524.001	1.000.524.002	1.000.524.003	1.000.524.004	1.000.524.005	1.000.524.007	1.000.524.006
Designation	B 6 x 11 x 14	B 6 x 16 x 20	B 6 x 18 x 22	B 6 x 21 x 25	B 6 x 28 x 32	B 6 x 28 x 34	B 6 x 36 x 42
D	mm 14	mm 20	mm 22	mm 25	mm 32	mm 34	mm 42
d	mm 11	mm 16	mm 18	mm 21	mm 28	mm 28	mm 36
b	mm 3	mm 4	mm 5	mm 5	mm 7	mm 7	mm 8
Available in all lengths up to	mm 3000	mm 3000	mm 3000	mm 3000	mm 500*	mm 3000	mm 500*

Material: C40 k, 1.0511 oder C45 k, 1.0503
* = Material: 35 S 20 k, 1.0726

Spline Bore Hubs DIN ISO 14

Order number	1.000.511.001	1.000.511.002	1.000.511.003	1.000.511.004	1.000.511.005	1.000.511.007	1.000.511.006
Designation	A 6 x 11 x 14	A 6 x 16 x 20	A 6 x 18 x 22	A 6 x 21 x 25	A 6 x 28 x 32	A 6 x 28 x 34	A 6 x 36 x 42
D	mm 14	mm 20	mm 22	mm 25	mm 32	mm 34	mm 42
d	mm 11	mm 16	mm 18	mm 21	mm 28	mm 28	mm 36
b	mm 3	mm 4	mm 5	mm 5	mm 7	mm 7	mm 8
A	mm 20	mm 28	mm 36	mm 40	mm 50	mm 50	mm 60
Length*	mm 50	mm 60	mm 70	mm 70	mm 80	mm 60	mm 100

* = max. grip length even
Material: 11SMnPb 30 k, 1.0718

Hose Clips, steel, zinc-plated

Order number	1.000.961.011	1.000.961.029	1.000.961.003	1.000.961.006	1.000.961.012	1.000.961.013	1.000.961.014	1.000.961.010
Joint-size	0.716/0.816/ 0.720/0.820	0.824/0.725/ 0.828	0.732/0.832/ 0.836	0.740/0.840/ 0.845	0.750/0.850/ 0.855	0.860/0.865	0.870	0.880
Clamping range	mm 12 – 20	mm 20 – 32	mm 25 – 40	mm 32 – 50	mm 40 – 60	mm 50 – 70	mm 60 – 80	mm 70 – 90

Hose Clips, stainless steel, corrosion- and acid-resistant

Order number	1.000.961.020	1.000.961.022	1.000.961.023	1.000.961.024	1.000.961.025	1.000.961.026	1.000.961.027	1.000.961.028
Joint-size	0.716/0.816/ 0.720/0.820	0.824/0.725/ 0.828	0.732/0.832/ 0.836	0.740/0.840/ 0.845	0.750/0.850/ 0.855	0.860/0.865	0.870	0.880
Clamping range	mm 12 – 20	mm 20 – 32	mm 25 – 40	mm 32 – 50	mm 40 – 60	mm 50 – 70	mm 60 – 80	mm 70 – 90

Bellows

Order number	1.000.830.009	1.000.830.010	1.000.830.013	1.000.830.014	1.000.830.002	1.000.830.003
Joint-size	0.716/0.816	0.720/0.820	0.725/0.824	0.828	0.732/0.832	0.836
L	mm 40	mm 47	mm 52	mm 58	mm 67	mm 74
D	mm 31	mm 33	mm 46	mm 50	mm 54	mm 65
d	mm 16	mm 20	mm 25	mm 28	mm 32	mm 36

1.000.830.004	1.000.830.015	1.000.830.016	1.000.830.006	1.000.830.007	1.000.830.017
0.740/0.840	0.845	0.750/0.850	0.855/0.860	0.865/0.870	0.880
84	97	110	122	132	157
75	82	90	100	110	131
040	45	50	56	65	80