

Installation and Operational Instructions for EAS®-compact®-F overload clutch Type 419__4__ Sizes 4 and 5

(B.419.2.ATEX.EN)

Translation of the Original Operational Instructions

Please read these Operational Instructions carefully and follow them accordingly!

Ignoring these Instructions may lead to malfunctions or to clutch failure, resulting in damage to other parts.


These Installation and Operational Instructions (I + O) are part of the clutch delivery.

Please keep them handy and near to the clutch at all times.

The product must be specially marked for use in areas where there is a danger of explosion.

The product will only be marked if it is ordered especially for an Ex-area.

Contents

Page 1: - Contents	Page 14: - Permitted Shaft Misalignments - Clutch Alignment
Page 2: - Safety and Guideline Signs - Safety Regulations	Page 15: - Torque Adjustment
Page 3: - Clutch Illustrations: Flange Design / Basic Type Type 4190.__4__	Page 16: - Adjustment Tables - Limit Switch
Page 4: - Clutch Illustrations: Design with ROBA®-ES Connection Type 4194.__4__ (Size 4) - Clutch Illustrations: Design with Lastic (Nor-Mex®) Connection Type 4194.__4__ (Size 5)	Page 17: - Clutch Dimensioning for ROBA®-DS Mounted Couplings
Page 5: - Clutch Illustrations: Design with ROBA®-DS Connection, Type 4196.__4__	Page 18: - Clutch Dimensioning for ROBA®-ES Mounted Couplings
Page 6: - Parts List	Page 19: - Clutch Dimensioning for ROBA®-ES Mounted Couplings
Page 7: - General Technical Data	Page 20: - Maintenance and Maintenance Intervals - Disposal
Page 8: - Technical Data, Type 4194.__4__ (Size 4) - Technical Data, Type 4194.__4__ (Size 5)	Pages 21 to 26: Guidelines and Directives for Operation in  Areas Where There is a Danger of Explosion (Dependent on Type) - Classification of Areas Where There is a Danger of Explosion and Permitted Types - Conditions to Observe in Areas Where There is a Danger of Explosion - Maintenance and Inspection Intervals for Clutches in Areas Where There is a Danger of Explosion - Initial Operation
Page 9: - Technical Data, Type 4196.__4__	Page 27: - Malfunctions / Breakdowns Type 4190.__4__
Page 10: - Design - Scope of Delivery / State of Delivery - Function - Re-engagement	Page 28: - Malfunctions / Breakdowns Type 4194.__4__ (Size 4)
Page 11: - Output Elements Installation	Page 29: - Malfunctions / Breakdowns Type 4194.__4__ (Size 4) - Malfunctions / Breakdowns Type 4194.__4__ (Size 5)
Page 12: - Mounting onto the Shaft - De-installation of the Cone Bushings and Shrink Disks - Cup Spring Layering	Page 30: - Malfunctions / Breakdowns Type 4196.__4__
Page 13: - Shaft Installation via Key Connection - Joining Both Clutch Components Type 4194.__4__ (Size 4) - Joining Both Clutch Components Type 4194.__4__ (Size 5) - Joining Both Clutch Components Type 4196.__4__	Page 31: - Declaration of Conformity

Installation and Operational Instructions for EAS[®]-compact[®]-F overload clutch Type 419 _ _ _4_ _ Sizes 4 and 5

(B.419.2.ATEX.EN)

Safety and Guideline Signs

DANGER



Immediate and impending danger, which can lead to severe physical injuries or to death.

CAUTION



Danger of injury to personnel and damage to machines.



Please Observe!
Guidelines on important points.



Guidelines on explosion protection

Safety Regulations

These Installation and Operational Instructions (I + O) are part of the clutch delivery.
Please keep them handy and near to the clutch at all times.



It is forbidden to start initial operation of the product until you have ensured that all applicable EU directives and directives for the machine or system, into which the product has been installed, have been fulfilled.
At the time these Installation and Operational Instructions go to print, the EAS[®]-clutches accord with the known technical specifications and are operationally safe at the time of delivery.

DANGER



- ☐ If the EAS[®]-clutches are modified.
- ☐ If the relevant standards for safety and / or installation conditions are ignored.



The EAS[®]-clutch is permitted for use in areas where there is a danger of explosion.
For application in Ex-areas, please observe the special safety-related guidelines and directives. The product must be especially marked for this area.
The product will only be marked if it is ordered especially for an Ex-area.

User-implemented Protective Measures

- ☐ Cover all moving parts to protect against seizure, dust impacts or foreign body impact.
- ☐ Replace self-locking hexagon nuts when they become ineffective after frequent loosening and tightening (for ROBA[®]-DS connection).
- ☐ The clutches may not be put into operation without a limit switch unless *mayr*[®] has been contacted and has agreed otherwise.

To prevent injury or damage, only specialist personnel are allowed to work on the components. They must be familiar with the dimensioning, transport, installation, initial operation, maintenance and disposal according to the relevant standards and regulations.
Please read the Installation and Operational Instructions carefully prior to installation and initial operation of the device.

These Safety Regulations are user hints only and may not be complete!

Installation and Operational Instructions for EAS[®]-compact[®]-F overload clutch Type 419_._4_._ Sizes 4 and 5

(B.419.2.ATEX.EN)

Clutch Illustrations: Flange Design / Basic Type, Type 4190_._4_._

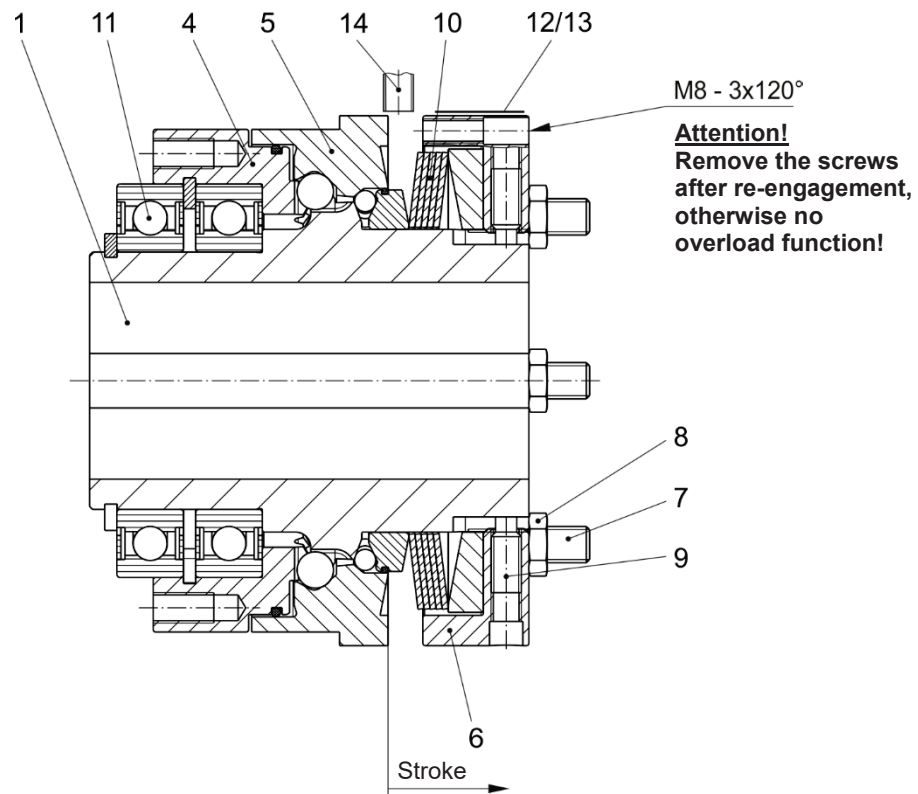


Fig. 1
Type 4190_54_._
Design with key connection

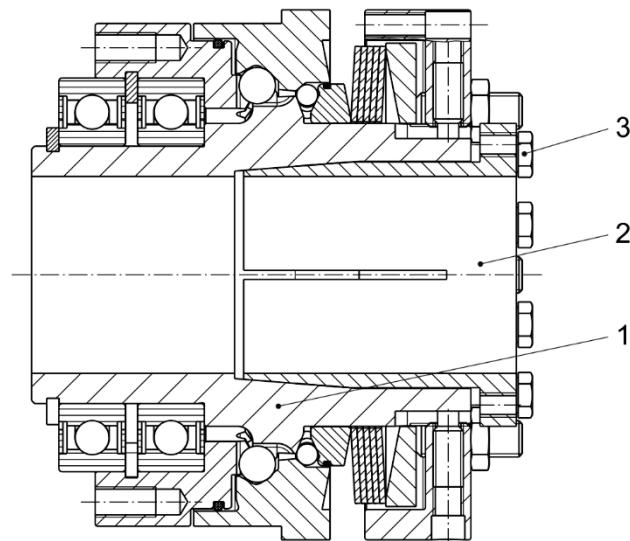


Fig. 1a
Type 4190_24_._
Design with hub with cone bushing

Installation and Operational Instructions for EAS®-compact®-F overload clutch Type 419_._4_._ Sizes 4 and 5

(B.419.2.ATEX.EN)

Clutch Illustrations: Design with ROBA®-ES Connection, Type 4194_._4_._ (Size 4)

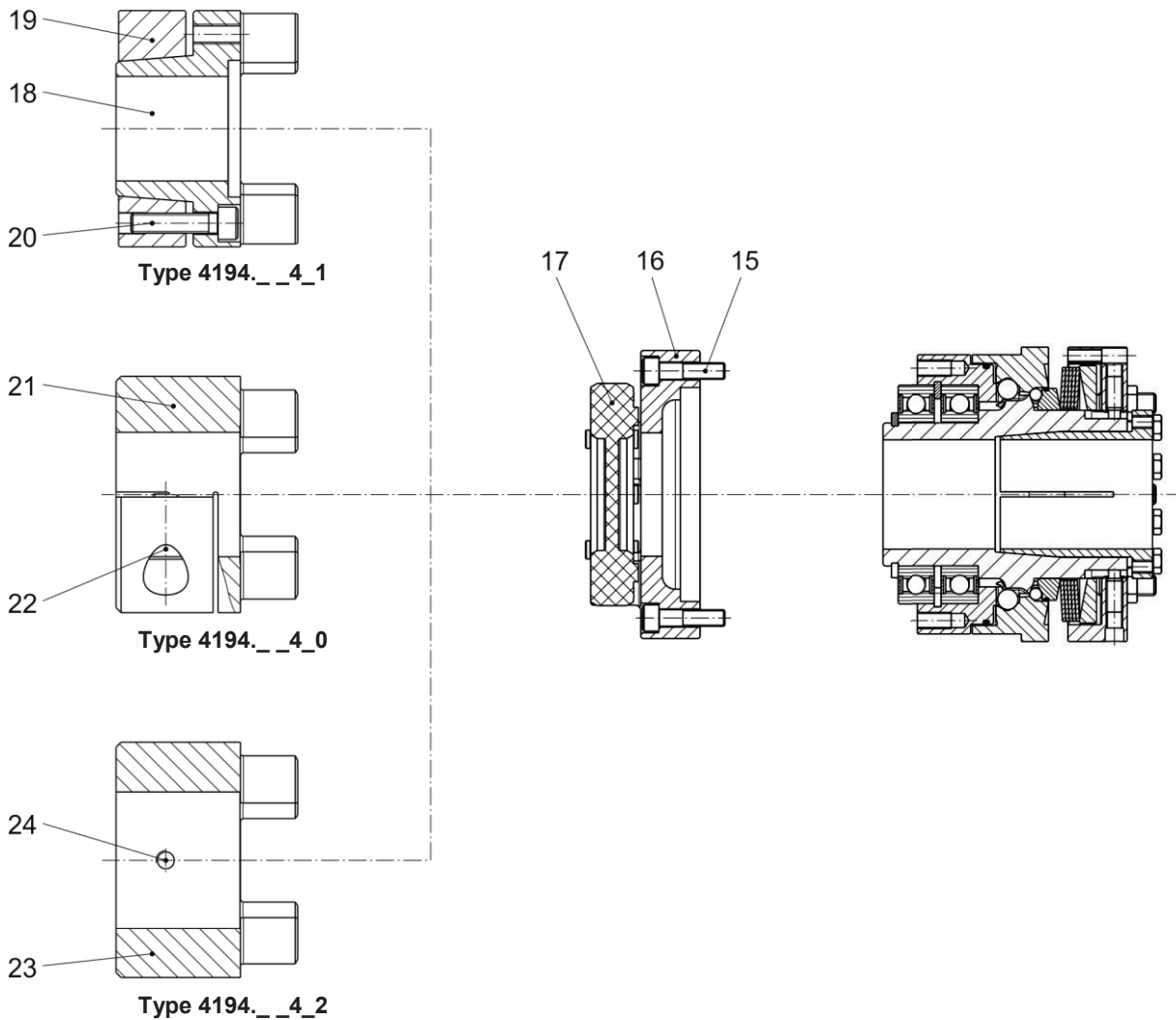


Fig. 2

Clutch Illustrations: Design with Lastic (Nor-Mex®) Connection, Type 4194_._4_._ (Size 5)

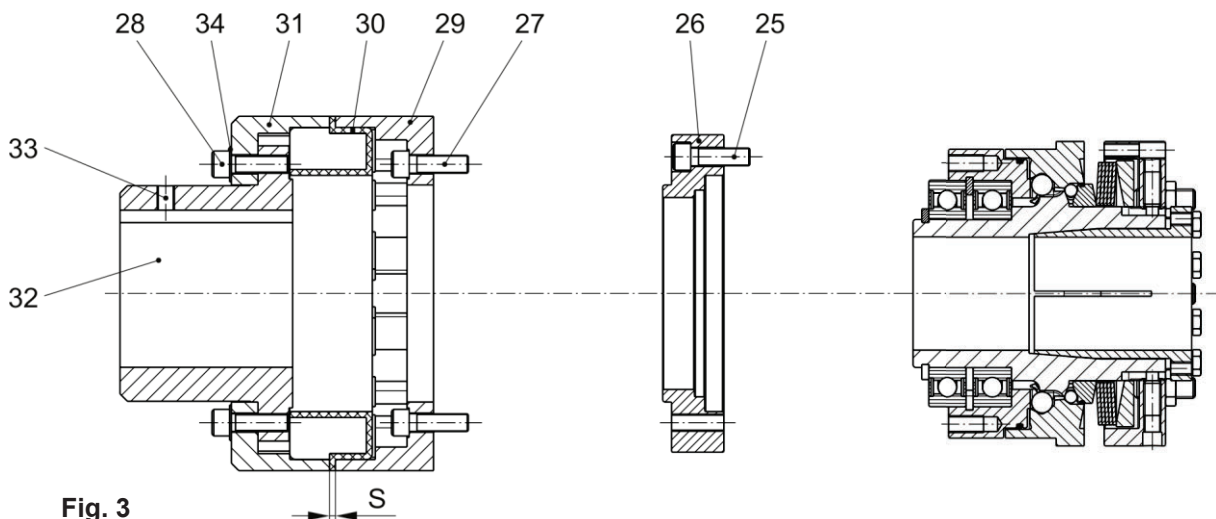


Fig. 3

Installation and Operational Instructions for EAS®-compact®-F overload clutch Type 419_._4_._ Sizes 4 and 5

(B.419.2.ATEX.EN)

Clutch Illustrations: Design with ROBA®-DS Connection, Type 4196_._4_._

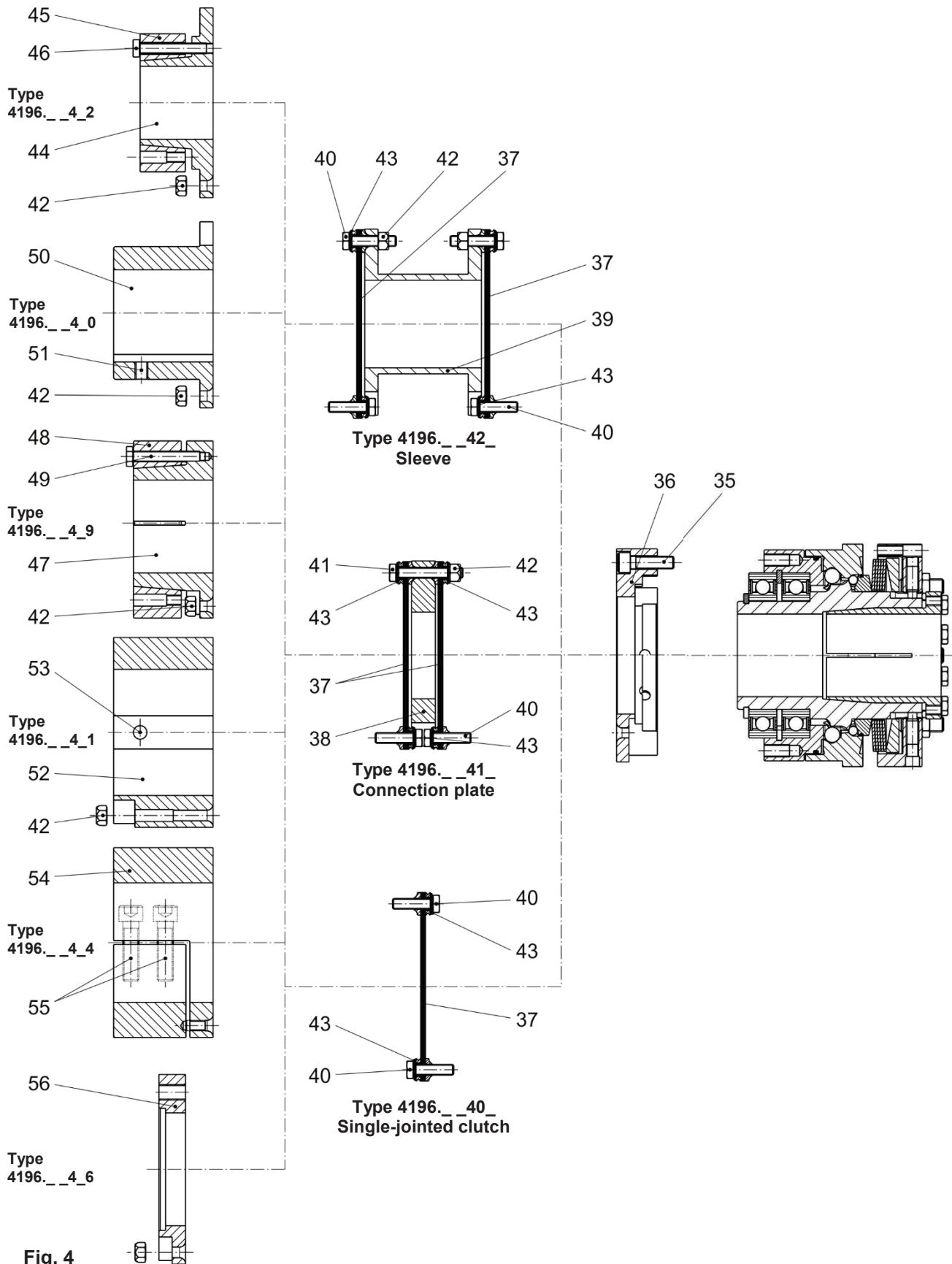


Fig. 4

Installation and Operational Instructions for EAS[®]-compact[®]-F overload clutch Type 419_ _ _4_ _ Sizes 4 and 5

(B.419.2.ATEX.EN)

Parts List

(Only use *mayr*[®] original parts)

Parts for Type 4190_ _ _4_ _:	
Item	Name
1	Hub
2	Cone bushing
3	Hexagon head screw
4	Pressure flange
5	Thrust washer
6	Adjusting nut
7	Set screw
8	Hexagon nut
9	Set screw
10	Cup spring
11	Deep groove ball bearing
12	Adjustment table
13	Type tag
14	Limit switch ¹⁾
Additional parts for Type 4194_ _ _4_ _ , Size 4:	
Item	Name
15	Cap screw ²⁾
16	Connection flange
17	Elastomeric element ³⁾
18	Shrink disk hub
19	Shrink disk
20	Cap screw
21	Clamping hub
22	Cap screw
23	Key hub
24	Set screw

Additional parts for Type 4194_ _ _4_ _ , Size 5:	
Item	Name
25	Cap screw ²⁾
26	Connection flange
27	Cap screw
28	Cap screw
29	Cam ring
30	Flexible intermediate ring (elastomeric element)
31	Claw ring
32	Hub
33	Set screw
34	Washer
Additional parts for Type 4196_ _ _4_ _:	
Item	Name
35	Cap screw ²⁾
36	Connection flange
37	Disk pack
38	Connection plate
39	Sleeve
40	Hexagon head screw
41	Hexagon head screw
42	Hexagon nut
43	Washer
44	Shrink disk hub
45	Shrink disk
46	Hexagon head screw
47	Shrink disk hub, large
48	Shrink disk, large
49	Hexagon head screw
50	Key hub
51	Set screw
52	Key hub, large
53	Set screw
54	Clamping hub
55	Cap screw
56	Flange



¹⁾ The limit switch Item 14 is not part of the standard scope of delivery

²⁾ Secure the cap screws Items 15, 25 and 35 with Loctite 243

³⁾ Elastomeric element colors (hardness): red (98 Sh A), yellow (92 Sh A), green (64 Sh D)

Installation and Operational Instructions for EAS[®]-compact[®]-F overload clutch Type 419_._4_._ Sizes 4 and 5

(B.419.2.ATEX.EN)

General Technical Data

Table 1

Size	Limit torque for overload M_G				Max. speed [rpm]
	Type 419_5_4_._ [Nm]	Type 419_6_4_._ [Nm]	Type 419_7_4_._ [Nm]	Type 419_8_4_._ [Nm]	
4	120 – 300	240 – 600	480 – 1200	600 – 1500	2500
5	240 – 600	480 – 1200	960 – 2400	1200 – 3000	2000

Table 2

Size	Thrust washer (Fig. 1; Item 5) stroke on overload [mm]	Bore from – to		min. bore of the hub (1) with cone bushing (2) for compliance with a transmission reliability > 2 to the maximum adjustment torque (see Guidelines on pages 22 + 24) $\varnothing d$ [mm]
		hub (1) with keyway $\varnothing d_p$ [mm]	hub (1) with cone bushing (2) $\varnothing d$ [mm]	
4	5.5	40 – 65	40 – 65	48
5	6.5	45 – 80	45 – 85	55

Table 3

Size	Max. permitted bearing loads			Permitted ambient temperature
	Axial forces [N]	Radial forces [N]	Transverse force torques ⁴⁾ [Nm]	
4	5000	7500	50	-20 °C to +80 °C
5	7700	11500	70	-20 °C to +80 °C

⁴⁾ Torques, which put strain on the deep groove ball bearing due to the non-centric axial forces having an effect on the pressure flange.

Table 4

Size	Screw tightening torques [Nm]															
	Item 3	Item 8	Item 9	Item 15	Item 20	Item 22	Item 25	Item 27	Item 28	Item 35	Item 40	Item 41	Item 42	Item 46	Item 49	Item 55
4	32	29	14.5	75	100	200	-	-	-	75	35	35	35	25	25	143
5	63	29	14.5	-	-	-	122	122	122	122	120	120	120	35	-	-

Installation and Operational Instructions for EAS®-compact®-F overload clutch Type 419._._4._ Sizes 4 and 5

(B.419.2.ATEX.EN)

Technical Data, Type 4194._._4._ (Size 4)

Table 5

Size	Respective ROBA®-ES Size	Bore latic-side from – to		
		Clamping hub (21) Type 4194._._4_0 [mm]	Shrink disk hub (18) Type 4194._._4_1 [mm]	Key hub (23) Type 4194._._4_2 [mm]
4	65	45 – 80	45 – 75	38 – 80

Table 6

Size	Nominal and maximum torques, flexible backlash-free shaft coupling, T_{KN} and $T_{K \max.}$					
	Type 4194._._43_ (yellow elastomeric element 92 Sh A)		Type 4194._._44_ (red elastomeric element 98 Sh A)		Type 4194._._46_ (green elastomeric element 64 Sh D)	
	T_{KN} [Nm]	$T_{K \max.}$ [Nm]	T_{KN} [Nm]	$T_{K \max.}$ [Nm]	T_{KN} [Nm]	$T_{K \max.}$ [Nm]
4	900	1800	1040	2080	1250	2500

Table 7

Size	Shaft misalignments, flexible coupling Type 4194.__4.__							Dimension “E” (Fig. 10) [mm]	Locking set screw (24) for hub (Item 23 / Fig. 2)	
	Axial ΔK_a [mm]	Radial ΔK_r			Angular ΔK_w				Thread	Tightening torque [Nm]
		92 Sh A [mm]	98 Sh A [mm]	64 Sh D [mm]	92 Sh A [°]	98 Sh A [°]	64 Sh D [°]			
4	2.6	0.25	0.18	0.13	1.0	0.9	0.8	35	M10	20

Table 8

Size	Transmittable torques T_R [Nm] on clamping hubs frictional locking (Item 21 / Type 4194._._4_0) - dependent on bore - suitable for tolerance constellation F7/k6													
	Ø 45	Ø 48	Ø 50	Ø 52	Ø 55	Ø 58	Ø 60	Ø 62	Ø 65	Ø 68	Ø 70	Ø 72	Ø 75	Ø 80
4	545	590	630	662	710	764	800	840	900	954	990	1032	1095	1200

Table 9

Size	Transmittable torques T_R [Nm] on shrink disk hubs frictional locking (Item 18 / Type 4194._._4_1) - dependent on bore - suitable for tolerance constellation H7/k6												
	Ø 45	Ø 48	Ø 50	Ø 52	Ø 55	Ø 58	Ø 60	Ø 62	Ø 65	Ø 68	Ø 70	Ø 72	Ø 75
4	1195	1425	1595	1680	1945	2210	2395	2575	2855	3140	3330	3525	3825

Technical Data, Type 4194._._4._ (Size 5)



Please observe the attached **Installation and Operational Instructions**
BAWN 060-EX (Nor-Mex® Size 240) for the Technical Data of the mounted coupling.

Installation and Operational Instructions for EAS[®]-compact[®]-F overload clutch Type 419_ _ _4_ _ Sizes 4 and 5

(B.419.2.ATEX.EN)

Technical Data, Type 4196_ _ _4_ _

Table 10

Size	Respective ROBA [®] -DS Size	Dim. "S" [mm]	Nominal torques and peak torques of the ROBA [®] -DS connection		Max. permitted shaft misalignments			
			T _{KN} [Nm]	T _{KS} [Nm]	Axial ⁵⁾ ΔK _a [mm]	Radial ⁶⁾ ΔK _r [mm]	Radial ⁷⁾ ΔK _r [mm]	Angular ⁸⁾ ΔK _w [°]
4	100	8.6	1600	2400	1.5	0.3	(H _s – S) x 0.0122	0.7
5	300	11.2	3500	5250	1.2	0.25	(H _s – S) x 0.00873	0.5

⁵⁾ Values refer to couplings with 2 disk packs. Only permitted as a static or virtually static value.

⁶⁾ The values refer to couplings with a connection plate (38).

⁷⁾ The values refer to couplings with a sleeve (39).

⁸⁾ The values refer to 1 disk pack.

Table 11

Size	Bore, torsionally rigid side, from – to				
	Shrink disk hub (Item 44) Type 4196_ _ _4_2 [mm]	Shrink disk hub, large (Item 47) Type 4196_ _ _4_9 [mm]	Key hub (Item 50) Type 4196_ _ _4_0 [mm]	Key hub, large (Item 52) Type 4196_ _ _4_1 [mm]	Clamping hub (Item 54) Type 4196_ _ _4_4 [mm]
4	35 – 55	55 – 90	35 – 70	65 – 95	32 – 90
5	50 – 85	-	45 – 90	-	-

Table 12

Size	Transmittable torques T _R [Nm] on shrink disk hubs frictional locking (Item 44 / Type 4196_ _ _4_2) - dependent on bore - suitable for tolerance constellation H7/g6													
	Ø 35	Ø 38	Ø 40	Ø 42	Ø 45	Ø 50	Ø 55	Ø 60	Ø 65	Ø 68	Ø 70	Ø 75	Ø 80	Ø 85
4	1057	1176	1269	1366	1500	1692	1889	-	-	-	-	-	-	-
5	-	-	-	-	-	3569	4024	4500	5177	5658	6334	7348	8453	9652

Table 13

Size	Transmittable torques T _R [Nm] on shrink disk hubs frictional locking (Item 47 / Type 4196_ _ _4_9) - dependent on bore - suitable for tolerance constellation H7/g6							
	Ø 55	Ø 60	Ø 65	Ø 70	Ø 75	Ø 80	Ø 85	Ø 90
4	2074	2366	2658	2943	3213	3458	3666	3828

Table 14

	Transmittable torques [Nm] on clamping hubs frictional locking (Item 54 / Type 4196_ _4_4) - dependent on bore - suitable for tolerance constellation H7/h6																	
Size	Ø 32	Ø 35	Ø 38	Ø 40	Ø 42	Ø 45	Ø 48	Ø 50	Ø 52	Ø 55	Ø 60	Ø 65	Ø 68	Ø 70	Ø 75	Ø 80	Ø 85	Ø 90
4	1102	1205	1309	1378	1447	1550	1653	1722	1791	1894	2066	2239	2342	2411	2583	2755	2927	3100

Table 16

Size	Locking set screw (51) for key hub (50) Type 4196_ _ _4_0		Locking set screw (53) for key hub, large (52) Type 4196_ _ _4_1	
	Thread	Tightening torque [Nm]	Thread	Tightening torque [Nm]
4	M10	14	M12	35
5	M12	35	-	-

Installation and Operational Instructions for EAS®-compact®-F overload clutch Type 419_ _ _4_ _ Sizes 4 and 5

(B.419.2.ATEX.EN)

Design

The EAS®-compact®-F overload clutch is designed as a mechanically disengaging overload clutch according to the ball detent principle.

Scope of Delivery / State of Delivery

- ☐ The clutch is manufacturer-assembled ready for installation.
- ☐ The torque is set manufacturer-side according to the customer's request (please compare the torque stipulated in the order with the torque imprinted/engraved in the identification).
Unless the customer requests a particular torque setting when ordering, the clutch will be pre-set to approx. 70 % of the maximum torque.
The adjusting nut (6) is marked with dimension "a" (70% of the maximum torque, see Figs. 1 and 14).

Please check the scope of delivery according to the Parts List as well as the state of delivery immediately after receiving the goods. *mayr®* will take no responsibility for belated complaints. Please report transport damage immediately to the deliverer. Please report incomplete delivery and obvious defects immediately to the manufacturer.

Function

The clutch protects the drive line from excessively high, unpermitted torque impacts which can occur due to unintentional blockages.

After overload has taken place, the transmitting mechanism is completely disconnected. Only the bearing friction continues to have an effect.

This means that no re-engagement impacts or metallic sliding movements occur on the clutch torque transmission geometries when using this clutch variant.

In order to make the clutch ready for operation again after an overload occurrence, the clutch must be re-engaged.

When in operation, the set torque is transmitted backlash-free onto the output from the motor shaft via the EAS®-compact®-F overload clutch (pressure flange Item 4). If the set limit torque is exceeded (overload), the clutch disengages and remains disengaged.

The input and output are separated residual torque-free.

A **limit switch with ATEX-approval** (not included in the standard scope of delivery) must be installed. The limit switch registers the disengagement movement and switches off the drive.

After-acting masses can slow down freely.

CAUTION



After overload occurrence, the clutch has no load-holding function.

Re-engagement

Please observe the information on the dangers of re-engagement in areas where there is a danger of explosion on page 21.



Re-engagement must only take place when the device is not running or at low differential speed (< 10 rpm).

EAS®-compact®-F overload clutch re-engagement is carried out by applying axial pressure onto the thrust washer (5). For this, different procedures are possible:

- ☐ By evenly screwing three screws M8 (not included in the standard scope of delivery) into the adjusting nut (6).

CAUTION



After re-engagement has taken place, the three screws must be removed immediately, as they could stop the clutch functioning (blockage).

- ☐ Manually, using a plastic hammer or installation levers (Fig. 5) supported on the adjusting nut (6), e. g. two screwdrivers placed opposite each other.
- ☐ By using an engagement mechanism.
The engagement procedure can also be automated using pneumatic or hydraulic cylinders.

On all variants, it may be necessary to turn between the clutch input and output sides slightly.

The level of engagement force required is dependent on the set limit torque for overload, and can be roughly calculated using the following formula:

$$F_E = 2.5 \times M_G \text{ [N]}$$

F_E = Engagement force of the clutch [N].

M_G = Set limit torque for overload [Nm].

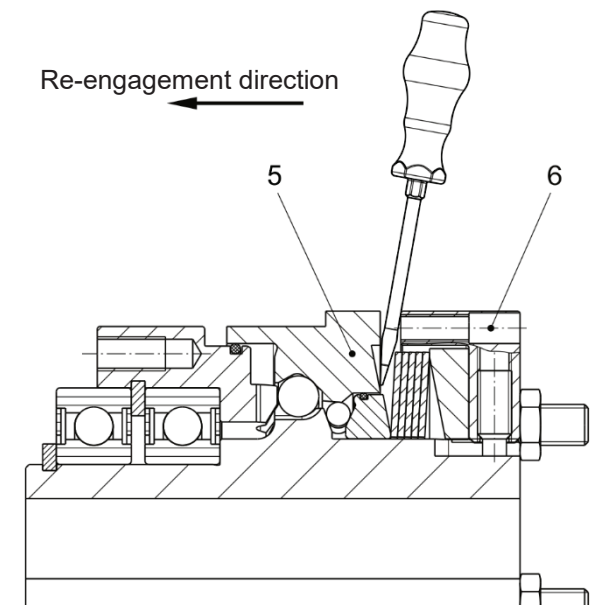


Fig. 5

Installation and Operational Instructions for EAS[®]-compact[®]-F overload clutch Type 419_._4_._ Sizes 4 and 5

(B.419.2.ATEX.EN)

Output Elements Installation

The output element is centered on a deep groove ball bearing (11) (tolerance H7/h5) and bolted together with the pressure flange (4).



The radial forces, axial forces and transverse force torques, which are introduced into the clutch bearing, must not exceed the maximum permitted values acc. Table 3.



Please observe the maximum permitted screw-in depth in the pressure flange (4) as well as the connection dimensions "a" and "e" for the output elements, see Figs. 6 or 7 and Table 17.

If the resulting radial force from the output element is anywhere near the centre of the ball bearing (11) and under the max. permitted radial load acc. Table 3, an additional bearing for the output element is not necessary.

No appreciable axial forces (see Table 3) should be transferred from the output element onto the clutch pressure flange (4).

On very small diameters, the output element is screwed together with the clutch pressure flange (4) via a customer-side intermediate flange.

Ball bearings, needle bearings or bearing bushings are suitable as bearings for the output element, depending on the installation situation and the installation space.

In order to prevent the output element (pressure flange (4)) from moving axially in the direction of the thrust washer (5) during overload, please make sure that the bearing of the output element is designed as a locating bearing (Fig. 7).



Output elements which protrude over the thrust washer (5) (see Fig. 7) must be designed with sufficient radial air.
➤ Dimension X ≥ 1 mm

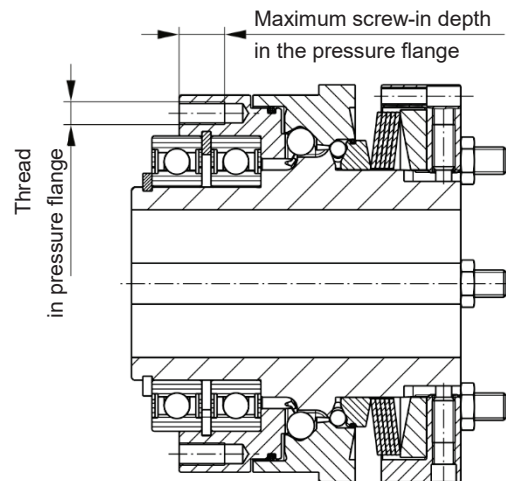


Fig. 6

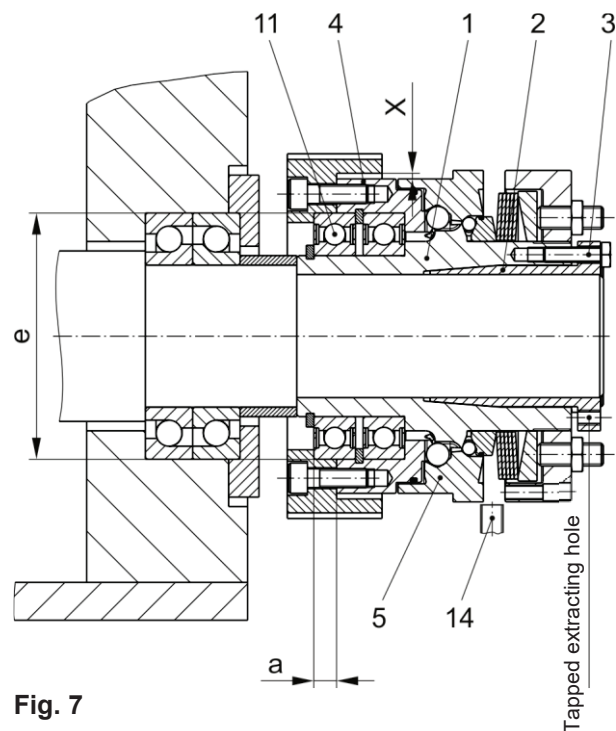


Fig. 7

Table 17

Size	Thread in the pressure flange (Fig. 6) with required screw quality and tightening torque for the customer-side screw connection	Max. screw-in depth [mm] in the pressure flange (Fig. 6)	Connection dimensions [mm] (Fig. 7)	
			a ^{+0.1}	e ^{H7/h5}
4	8 x M10 / 12.9 / 74 Nm	20	12	130
5	8 x M12 / 12.9 / 127 Nm	20	13	160

Installation and Operational Instructions for EAS®-compact®-F overload clutch Type 419_._4_._ Sizes 4 and 5

(B.419.2.ATEX.EN)

Mounting onto the Shaft

EAS®-compact®-F clutches include cone bushings, shrink disks, clamping hubs or keyways as part of the standard delivery.

During installation of cone bushings, shrink disks or clamping hubs, please observe the following:

- ☐ Recommended shaft tolerance
 - for cone bushings: h6
 - for clamping hubs: see Tables 8 and 14
 - for shrink disk hubs: see Tables 9, 12 and 13
- ☐ Shaft surface: finely turned or ground ($R_a = 0.8 \mu\text{m}$).
- ☐ Shaft material: yield point at least 400 N/mm², e.g. C45 +QT, 42CrMoS4 +QT.
- ☐ Degrease or remove conserving layers on the shafts and bores before installing the clutch.
Greasy or oily bores or shafts do not transmit the torques defined in the catalogue.
- ☐ Mount the clutch or clutch hubs onto both shaft ends using a suitable device and bring it / them into the correct position.
- ☐ Tighten the tensioning screws (Item 3) of the cone bushing (2) in 2 steps cross-wise and then in 3 to max. 6 tightening sequences evenly using a torque wrench to the torque stated in Table 4.
- ☐ Type 4194.-:
Tighten the tensioning screws (20) in the shrink disks (19) stepwise (in 3 to max. 6 tightening sequences) and cross-wise evenly using a torque wrench to the torque stated in Table 4.
- ☐ Type 4196.-:
Tighten the tensioning screws (46/49) of the shrink disk (45/48) using a torque wrench evenly and one after the other in max. 6 sequences to the torque stated in Table 4.



The clutch or clutch hub carries out an axial movement in the direction of the cone bushing (2) when tightening the cone bushing (2). Because of this effect, please ensure that on the EAS®-Compact®-F clutch with disk pack (Type 4196_._4_._), first the cone bushing (2) is completely tightened, then the other (disk pack) side.

Cup Spring Layering (Fig. 8)

Correct cup spring layering is a prerequisite for problem-free clutch function and torque adjustment.

Torque range "medium":

one cup spring (Type 419_5_4_._)

Torque range "high":

two cup springs (Type 419_6_4_._)

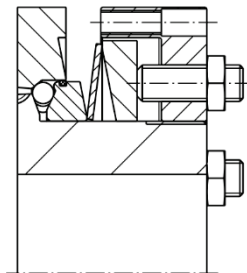
Torque range "very high":

four cup springs (Type 419_7_4_._)

Torque range "maximum":

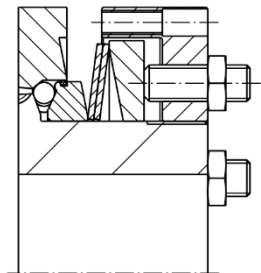
five cup springs (Type 419_8_4_._)

1x layered



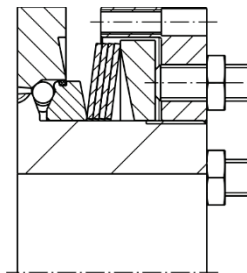
Type 419_5_4_._

2x layered



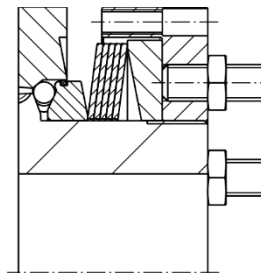
Type 419_6_4_._

4x layered



Type 419_7_4_._

5x layered



Type 419_8_4_._

Fig. 8

De-installation of the Cone Bushings and Shrink Disks

In the cone bushings and the shrink disks, there are tapped extracting holes next to the tensioning screws.

- 1) Loosen all tensioning screws by several thread turns.
- 2) Screw out the tensioning screws located next to the tapped extracting holes and screw them into the tapped extracting holes up to their limits.
Then tighten these screws until the tensioning connection loosens.

Installation and Operational Instructions for EAS[®]-compact[®]-F overload clutch Type 419_._4_._ Sizes 4 and 5

(B.419.2.ATEX.EN)

Shaft Installation via Key Connection

On the EAS[®]-compact[®]-F with a keyway, the clutch must be axially secured both EAS[®]-side and lastic-side after mounting onto the shaft, e.g.:

- for Types 4190.
with a press cover and a screw, screwed into the shaft threaded center hole
- for Types 4194. and 4196.
on the EAS[®]-side with a press cover and a screw, screwed into the shaft threaded center hole and on the lastic-side with a locking set screw:
 - ➔ locking set screw (24) for hub (23), see Fig. 9 and Table 7 on page 8,
 - ➔ locking set screw (51/53) for hub (50/52), see Fig. 4 on page 5 and Table 16 on page 9.



There must be sufficient radial air between the press cover and the inner diameter of the output element (see Fig. 9).
➤ Dimension X ≥ 1 mm

Joining Both Clutch Components Type 4194._4_._ (Size 4 / Figs. 2 and 9)

The flexible elastomeric element (17) is pre-tensioned between the metal claws by joining the components 18/21/23 with the connection flange (16). To do this, an axial installation force is required.

The force required can be reduced by lightly greasing the elastomeric element (17).



Use PU-compatible lubricants (e. g. Vaseline or a multi-purpose grease based on mineral oil, NLGI Class 2, with a basic oil viscosity of approx. 200 mm²/s).
No unpermittedly high axial pressure should be placed on the elastomeric element (17) in completely assembled condition.
The distance dimension "E" acc. Fig. 9 and Table 7 must be observed!
Please see guideline under ATEX!

Joining Both Clutch Components Type 4194._4_._ (Size 5 / Fig. 3)



Please observe the attached **Installation and Operational Instructions**
BAWN 060-EX (Nor-Mex[®] Size 240).

Joining Both Clutch Components Type 4196._4_._ (Fig. 4)

Join the misalignment-flexible part and the overload clutch and screw together with cap screws (35) to the tightening torque given in Table 4.

The cap screws (35) must be protected using a screw-securing product, e.g. Loctite 243.

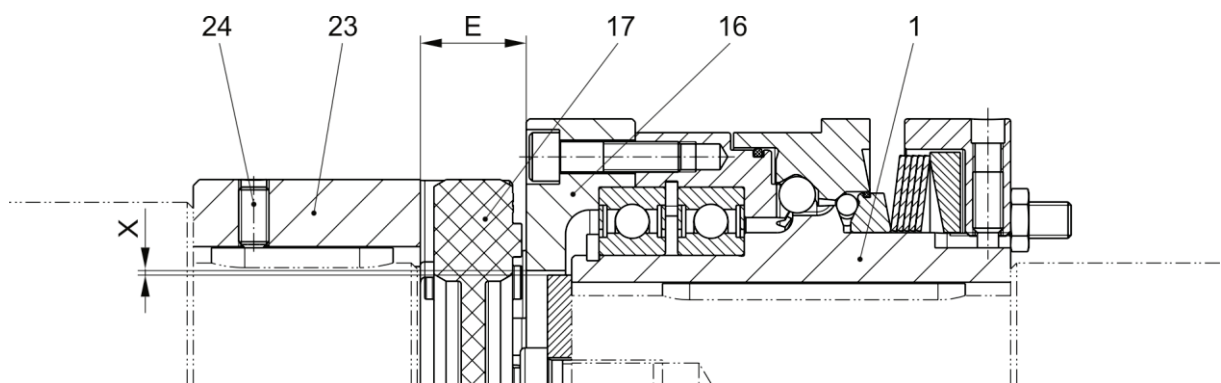


Fig. 9

Installation and Operational Instructions for EAS®-compact®-F overload clutch Type 419_._4_._ Sizes 4 and 5

(B.419.2.ATEX.EN)

Permitted Shaft Misalignments



Please observe the attached **Installation and Operational Instructions BAWN 060-EX (Nor-Mex® Size 240)** for the permitted shaft misalignments of Type 4194_._4_._ Size 5.

The EAS®-Compact®-F clutches Types 4194_._4_._ (lastic backlash-free) and 4196_._4_._ (torsionally rigid backlash-free / 2 disk packs) compensate for radial, axial and angular shaft misalignments (Fig. 10) without losing their backlash-free function.

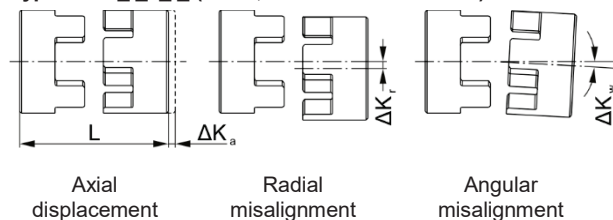
The EAS®-Compact®-F clutches Type 4196_._40_ (torsionally rigid backlash-free / 1 disk pack) compensate only for axial and angular shaft misalignments.



The EAS®-Compact®-F clutches Type 4196_._40_ (torsionally rigid backlash-free / 1 disk pack) **do not** compensate for radial shaft misalignments.

However, the Type-specific permitted shaft misalignments indicated in Tables 7 and 10 must not simultaneously reach their maximum value.
If more than one kind of misalignment takes place simultaneously, they influence each other. This means that the permitted misalignment values are dependent on one another, see Fig. 11.
The sum total of the actual misalignments in percent of the maximum value must not exceed 100 %.
The permitted misalignment values given in Tables 7 and 10 refer to clutch operation at nominal torque, an ambient temperature of +30 °C and an operating speed of 1500 rpm. If the clutch is operated in other or more extreme operating conditions, please observe the dimensioning guidelines of the individual shaft couplings or contact the manufacturer.

Type 4194_._4_._ (lastic, backlash-free/ Size 4)



Type 4196_._4_._ (torsionally rigid, backlash-free)

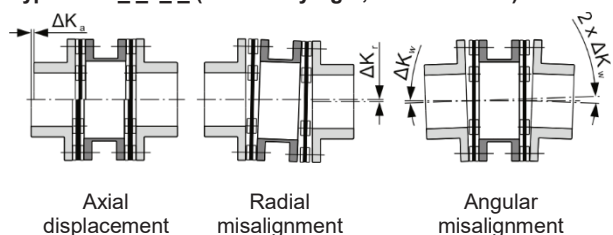


Fig. 10

Example (Size 5 / Type 4196.60412):

Axial displacement occurrence $\Delta K_a = 0.48$ mm equals 40 % of the permitted maximum value $\Delta K_a = 1.2$ mm.

Radial misalignment occurrence $\Delta K_r = 0.075$ mm equals 30 % of the permitted maximum value $\Delta K_r = 0.25$ mm.

=> permitted angular misalignment $K_w = 30$ % of the maximum value $\Delta K_w = 0.5^\circ$

=> $\Delta K_w = 0.15^\circ$

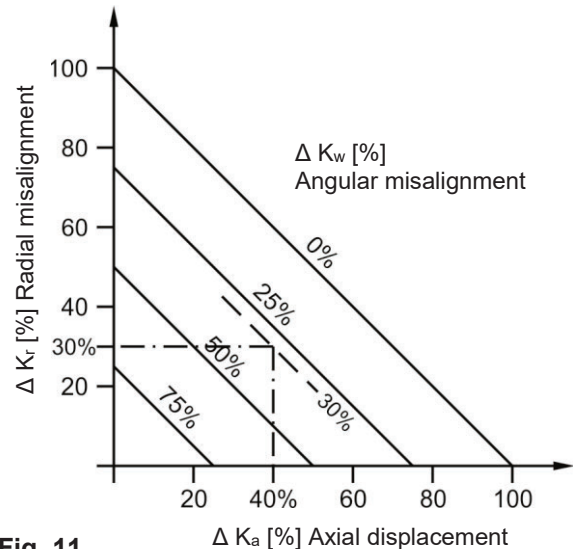


Fig. 11

Clutch Alignment

Exact alignment of the clutch increases the clutch service lifetime and reduces the load on the shaft bearings.

In most of the applications, clutch alignment using a straight edge in two levels vertical to each other is sufficient.

However, we recommend alignment of the clutch (of the shaft ends) using a dial gauge or laser measurement devices on drives operating at very high speeds.

Installation and Operational Instructions for EAS®-compact®-F overload clutch Type 419_._4_._ Sizes 4 and 5

(B.419.2.ATEX.EN)

Torque Adjustment

In order to guarantee low-wear clutch operation, it is essential that the clutch torque is set to a sufficiently high service factor (overload torque to operating torque).

Our experience has shown that an **adjustment factor of 1.5 to 3** gives good results.

In case of very high load alternations, high accelerations and irregular operation, please set the adjustment factor higher.

Adjustment is carried out via dimension "a" by turning the set screws (Item 7, Fig. 12).

The adjusting nut (6) remains turned in flush position with the hub (1).

The installed cup springs (10) are operated in the negative range of the characteristic curve (see Fig. 13); this means that a stronger pre-tensioning of the cup spring results in a decrease of the spring force.

The torque is set manufacturer-side according to the customer's request. If no particular torque adjustment is requested customer-side, the clutch will always be **pre-set** and **marked** (calibrated) manufacturer-side to approx. 70 % of the maximum torque.



Turning the set screws (7) clockwise causes a reduction in torque (Fig. 13, dimension "a -" acc. adjustment table (12) and Fig. 14). Turning it anti-clockwise causes an increase in torque (Fig. 13, dimension "a +" acc. adjustment table (12) and Fig. 14). You should be facing the adjusting nut (6) as shown in Fig. 12.

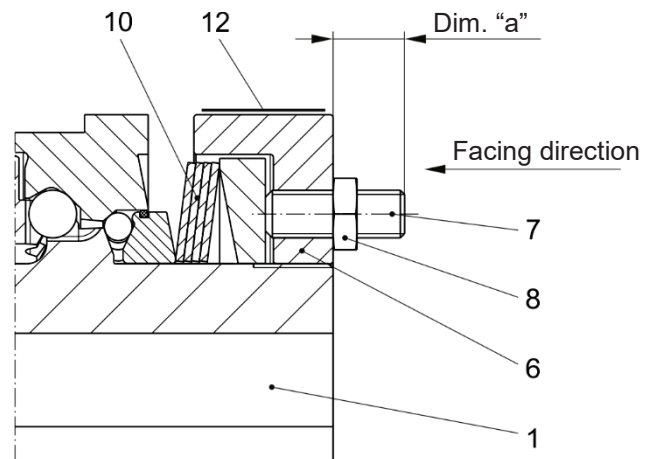


Fig. 12



The adjusting nut (6) is marked with dimension "a" (70% of the maximum torque). The adjusting nut (6) is turned in flush position with the hub (1).

Changing the Torque



The torque is changed exclusively via the set screws (7) and not via the adjusting nut (6).

- Loosen all hexagon nuts (6 pieces, Item 8).
- For dimension "a", see the adjustment table (Item 12, Fig. 14) (The adjustment table (12) is glued onto the outer diameter of the adjusting nut (6), see Fig. 12).
- Adjust all set screws (6 pieces, Item 7) evenly to the required dimension "a" using a hexagon socket wrench, wrench opening 6.
- Counter (secure) the set screws (6 pieces, Item 7) again using hexagon nuts (8).



Adjusting the adjusting nut (6) or distorting the cup spring (10) outside of the cup spring characteristic curve (see Fig. 13) stops the clutch functioning.

The inspection dimension "a" (markings on adjusting nut) can show deviations due to construction tolerances or to clutch wear. After de-installing the clutch (e.g. due to cup spring replacement), the clutch must be re-adjusted and calibrated using dimension "a" (acc. markings on the adjusting nut and the adjustment table).

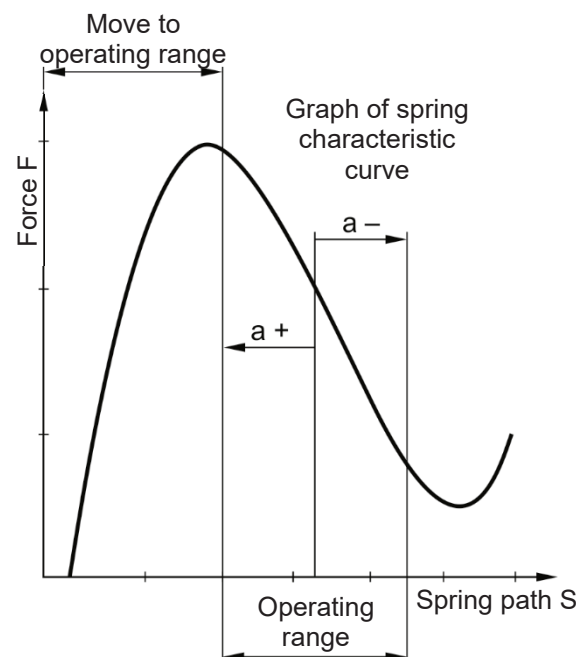
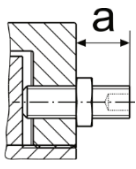


Fig. 13

Installation and Operational Instructions for EAS®-compact®-F overload clutch Type 419_._4_ _ Sizes 4 and 5

(B.419.2.ATEX.EN)

Adjustment Tables (Item 12)

	Größe / Size 4 FRSH	Tellerfeder Cup springs	M-Bereich Torque range	100 %	90 %	80 %	"a" [mm]			
							70 %	60 %	50 %	40 %
	419_5_ _ _ _	1x1 /	120-300 Nm	a + 1.0	a + 0.6	a + 0.3	a	a - 0.2	a - 0.5	a - 0.8
	419_6_ _ _ _	1x2 //	240-600 Nm							
	419_7_ _ _ _	1x4 ////	480-1200 Nm							
	419_8_ _ _ _	1x5 /////	600-1500 Nm							

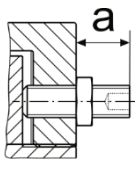
	Größe / Size 5 FRSH	Tellerfeder Cup springs	M-Bereich Torque range	100 %	90 %	80 %	"a" [mm]			
							70 %	60 %	50 %	40 %
	419_5_ _ _ _	1x1 /	240-600 Nm	a + 1.5	a + 0.9	a + 0.4	a	a - 0.4	a - 0.8	a - 1.2
	419_6_ _ _ _	1x2 //	480-1200 Nm							
	419_7_ _ _ _	1x4 ////	960-2400 Nm							
	419_8_ _ _ _	1x5 /////	1200-3000 Nm							

Fig. 14

Limit Switch (Item 14; Figs. 1 and 15)

In order to limit run-out times after overload has taken place, a limit switch must be mounted onto the overload clutch. The contactless limit switch is to be mounted onto the switching edge of the clutch (Fig. 15) so that no signal changes are caused during normal operation on the limit switch by the usual clutch run-out errors.

In case of overload, the thrust washer (5) carries out a stroke (see Fig. 1 and Table 2) in the direction of the adjusting nut (6), which is used to signal change on the limit switch (14).

The signal change should take place at the latest after an axial thrust washer (5) stroke of 0.5 mm. At the same time, please maintain a radial minimum distance of 0.5 mm in order to prevent rubbing of the contactless limit switch.

Limit Switch Installation

- ☐ Adjust the switch distance for the contactless Ex-limit switch acc. Fig. 15.
- ☐ Please ensure that the Ex-limit switch is functioning correctly.

Contactless limit switch (mounting example)

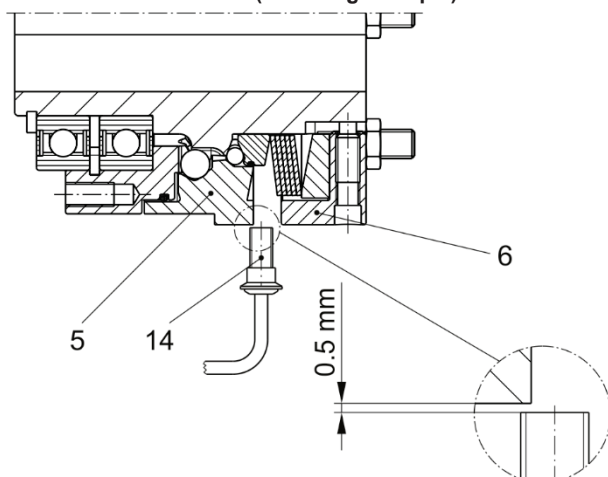


Fig. 15

Installation and Operational Instructions for EAS®-compact®-F overload clutch Type 419_ _ _4_ _ Sizes 4 and 5

(B.419.2.ATEX.EN)

Clutch Dimensioning for ROBA®-DS Mounted Couplings

$$T_{KN} \geq \frac{9550 \times P \times f_B}{n}$$

Definition of terms:

T_{KN} [Nm]	Coupling nominal torque
T_{KS} [Nm]	Coupling peak torque
T_B [Nm]	Operating torque
T_S [Nm]	Operating peak torque
P [kW]	Drive machine nominal power
f_B [-]	Service factor according to Table 18
n [rpm]	Drive machine nominal speed

Table 18

Service Factor f_B		Work Machine Load Class		
		I	II	III
Drive machine	Electromotor, turbine, hydraulic motor	1.1	1.4	1.9
	Piston machine with more than 3 cylinders	1.4	1.7	2.2
	Piston machine with up to 3 cylinders	1.7	2.0	2.5

If the operating torque is known, the coupling nominal torque must be higher than the maximum occurring operating torque $T_{KN} > T_B$ (T_{KN} acc. Table 10). Please also observe the height and type of start-up impacts or sporadic load impacts. As individual events, these may not exceed the stated clutch peak torque $T_{KS} > T_S$ (T_{KS} acc. Table 10). The max. number of impact occurrences over the entire coupling lifetime must not exceed pulsating 1×10^5 or alternating 1×10^4 .



In ATEX applications, no temperature factor must be taken into consideration as the maximum permitted ambient temperature is 80°C.

Table 19

Classification of Work Machines into Load Classes	
Construction machinery - Concrete blenders - Chain conveyors - Chain carriages - Crushers	II III III III
Chemical industry - Mixers (thick fluids) - Mixers (thin fluids) - Centrifuges - Blenders	II I II II
Fans / vents	II
Generators / convertors - Frequency converters - Generators	I II
Foodstuffs machines - Kneading machines - Mills - Packaging machines	II III II
Paper machines	III
Compressors	II
Conveyor systems - Conveyor belts - Sloping elevators - Goods elevators - Passenger elevators	II III II II
Wood / plastic processing - Planing machines - Reciprocating saws - Extruders - Blenders	II III II II
Crane systems	II
Metal processing - Punching / pressing - Machine tools	III II
Pumps - Centrifugal pump (thin fluids) - Centrifugal pump (thick fluids) - Pistons / plunger pumps	I II III
Textile machines	II
Washing machines	II

Installation and Operational Instructions for EAS®-compact®-F overload clutch Type 419_ _ _4_ _ Sizes 4 and 5

(B.419.2.ATEX.EN)

Clutch Dimensioning for ROBA®-ES Mounted Couplings

1. Approximate calculation of the coupling torque:

1.1. T_N from the nominal power

$$T_N = \frac{9550 \times P_{AN/LN}}{n}$$

1.2. Dynamic torques T_S and T_W (5.1 and 5.2):

Drive-side excitation:

Peak torque: $T_S = T_{AS} \times \frac{J_L}{J_A + J_L} \times S_A$

Alternating torque: $T_W = T_{AW} \times \frac{J_L}{J_A + J_L} \times V_R$

Output-side excitation:

Peak torque: $T_S = T_{LS} \times \frac{J_A}{J_A + J_L} \times S_L$

Alternating torque: $T_W = T_{LW} \times \frac{J_A}{J_A + J_L} \times V_R$

2. Comparison of torques occurring in the coupling with the permitted torques

The coupling must be dimensioned so that the loads occurring do not exceed the permitted values in any operating condition.

2.1. Load due to nominal torque

$$T_{KN} \geq T_N \times S_\delta$$

2.2. Load due to torque impacts (5.3)

$$T_{K \max} \geq T_S \times S_Z \times S_\delta + T_N \times S_\delta$$

2.3. Load due to resonance passing through (5.4)

$$T_{K \max} \geq T_S \times S_Z \times S_\delta \times V_R + T_N \times S_\delta$$

2.4. Load due to constantly alternating torque – cycle operation (5.5 and 5.6)

Permitted alternating torque on coupling:

$$T_{KW} = 0.25 \times T_{KN} \text{ (for aluminum hubs)}$$

$$T_{KW} = 0.35 \times T_{KN} \text{ (for steel hubs)}$$

$$T_{KW} \geq T_W \times S_\delta \times S_f$$

3. Inspection of permitted misalignments

$$\Delta K_a \geq \Delta W_a \times S_\delta$$

$$\Delta K_r \geq \Delta W_r \times S_\delta \times S_n$$

$$\Delta K_w \geq \Delta W_w \times S_\delta \times S_n$$

If more than one kind of misalignment occurs at the same time, please observe Fig. 11 (page 14).

4. Frictional locking inspection on hub connection

$T_R > T_{\max}$: T_{\max} is the maximum torque occurring in the coupling.

For values for T_R : see Tables 8 and 9 on page 8.

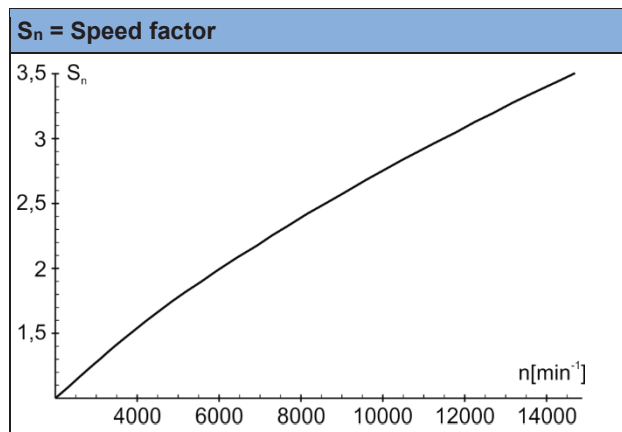
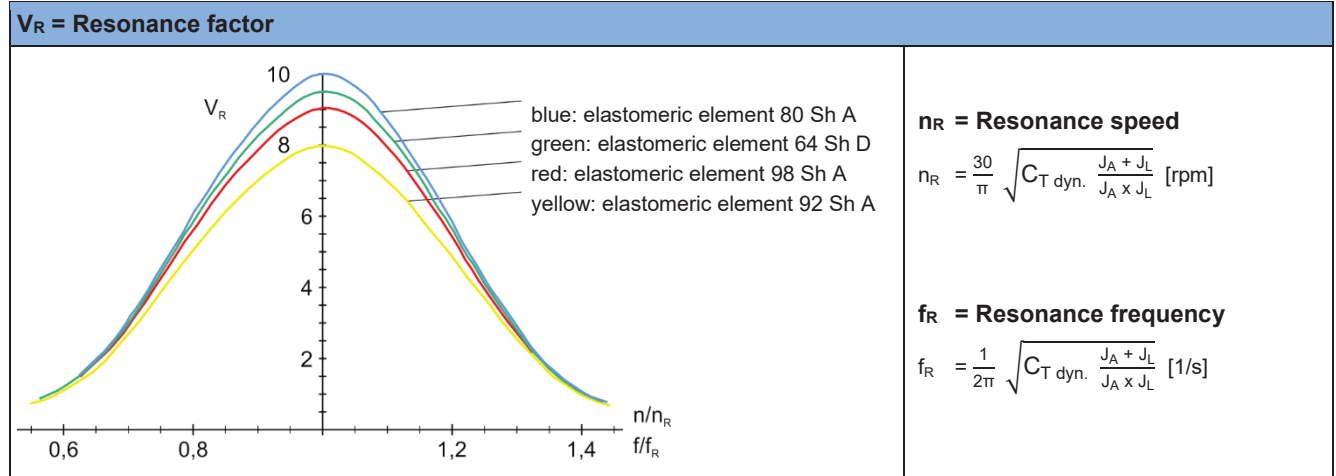
5. Explanations

- 5.1. The torque determination on the coupling is applicable if the shaft coupling in the system is the torsionally softest element, and therefore the system can be considered as a double-mass oscillator. If this is not the case, the calculation of the torque on the coupling requires a more detailed calculation procedure.
- 5.2. The impact factors S_A / S_L describe the impact progression. A rectangular progression of the peak torque is the heaviest impact ($S_A/S_L = 2.0$). A flat sinus progression of the peak torque is a light impact ($S_A/S_L = 1.2$).
- 5.3. T_S , the peak torque in the coupling, is the maximum torque on the coupling during the impact minus the system torque having an effect on the coupling during normal operation.
 $T_S = T_{\max, \text{ impact}} - T_N$
- 5.4. If a drive is operated supercritically, meaning that the operating speed n lies above the resonance speed n_R , then resonance passing through causes particular loads.
If the resonance passes through quickly below the operating speed, only a few resonance peaks occur. The alternating torque in resonance can therefore be compared to the maximum torque on the coupling (see also 5.6).
- 5.5. S_f takes the frequency dependency of lifetime into account. The frequency dependency is first taken into account above 5 Hz.
- 5.6. On appreciable vibration excitation, the resonance must be moved out of the operating range by selecting a suitable torsional spring rigidity of the coupling.

Installation and Operational Instructions for EAS®-compact®-F overload clutch Type 419_ _ _4_ _ Sizes 4 and 5

(B.419.2.ATEX.EN)

Service Factors for Coupling Dimensioning



S _f = Frequency factor		
F in Hz	≤ 5	> 5
S _f	1	$\sqrt{\frac{f}{5}}$

f shows the load alternation per second (Hz = 1/s)

S _z = Start-up factor/impact frequency					
S/h	0 – 100	101 – 200	201 – 400	401 – 800	801 – 1000
S _z	1	1.2	1.4	1.6	1.8

S _δ = Safety factor for temperature			
T	-30 °C / +30 °C	+60 °C	+90 °C
S _δ	1	1.5	2

S _A or S _L = Impact factor	
Impacts	S _A or S _L
Light impacts	1.2
Medium impacts	1.6
Heavy impacts	2.0

Terms

P _{AN/LN}	[kW]	Drive-side/load-side power
T _R	[Nm]	Transmittable torque (frictional locking, Tables 8 and 9 on page 8)
T _{AS/AW}	[Nm]	Excitational torque, drive end
T _{LS/LW}	[Nm]	Excitational torque, load side
T _N	[Nm]	System torque
T _W	[Nm]	System alternating torque
T _S	[Nm]	Peak torque
T _{max}	[Nm]	Maximum torque in the coupling
T _{KN}	[Nm]	Permitted nominal torque
T _{Kmax}	[Nm]	Permitted maximum torque
T _{KW}	[Nm]	Permitted permanent alternating torque
J _A	[kgm ²]	Mass moment of inertia, drive end
J _L	[kgm ²]	Mass moment of inertia, load side
ΔK _a	[mm]	Permitted axial displacement
ΔK _r	[mm]	Permitted radial misalignment

ΔK _w	[°]	Permitted angular misalignment
ΔW _a	[mm]	Axial shaft misalignment
ΔW _r	[mm]	Radial shaft misalignment
ΔW _w	[°]	Angular shaft misalignment
C _T	[Nm/rad]	Torsional spring rigidity
n	[rpm]	Nominal speed
n _R	[rpm]	Resonance speed
S _{A/L}	[-]	Impact factor, drive end/load side
S _n	[-]	Speed factor
S _z	[-]	Start-up factor/impact frequency
S _δ	[-]	Temperature factor
S _f	[-]	Frequency factor
V _R	[-]	Resonance factor
f	[1/s]=[Hz]	Load factor
f _R	[Hz]	Resonance frequency

Installation and Operational Instructions for EAS®-compact®-F overload clutch Type 419_._4_ _ Sizes 4 and 5

(B.419.2.ATEX.EN)

Maintenance and Maintenance Intervals



Please also observe the attached **Installation and Operational Instructions BAWN 060-EX (Nor-Mex® Size 240)** for Type 4194_._4_ _ Size 5.

The following maintenance and inspection intervals are to be maintained:

1.) Before initial operation:

- Visual inspection. Inspection of the installation parameters (misalignment and tightening torques (see Table 4)) and the clutch running behaviour

2.) After 5 to 10 operating hours:

- Check the tightening torques produced

3.) After 1000 h, at the latest after 3 months:

- Visual inspection
- Inspection of the screw tightening torques
The specified tightening torques (see Table 4) must be maintained.
- Inspection of torsional backlash and elastomer wear (Type 4194_._4_ _)
- Inspection of the misalignment and the clutch running behavior

4.) If no irregularities or wear are found during the maintenance and inspection interval defined in point 3.), further inspection intervals can, with unchanged operating parameters, take place **after 2000 operating hours, after 1000 disengagements or after maximum 12 months**. The following work must be carried out:

- Visual inspection
- Functional inspection
- Inspection of the shaft-hub connection
- Inspection of the screw tightening torques
The specified tightening torques (see Table 4) must be maintained.
- Inspection of the set torque
- Clutch release inspection
- Inspection of the bearing or bearing pre-tension
- Inspection of torsional backlash and elastomer wear (Type 4194_._4_ _)
- Inspection of the misalignment and the clutch running behavior

We recommend that this maintenance work is carried out at the site of manufacture:

- Re-greasing of the transmission geometries, balls, recesses and sealing elements.

5.) Replacement of the elastomeric element / intermediate ring (Type 4194_._4_ _) **after 5 years**.

Clutch re-greasing must only be carried out at the place of manufacture or by specially trained personnel.

For greasing, please use NLGI Class 1.5 grease with a basic oil viscosity of 460 mm²/s at 40 °C, e.g. Mobilith SHC460. When re-installing the clutch, please secure all screws with Loctite 243 (medium hard).

If large amounts of dirt or dust are present or in extreme ambient conditions, it may well be necessary to carry out inspections at shorter maintenance intervals.

Elastomer wear limit (Type 4194_._4_ _):



Elastomeric elements / intermediate rings are parts subject to wear, which change their characteristics depending on the ambient conditions and loads. The maximum operating time for the elastomer is 5 years.

For the elastomeric element (17), the following applies:

No abraded particles are allowed on the elastomeric element (17).

The gap between two claws must be filled with the elastomer, with no room for backlash. You should not be able to insert a feeler gauge with a thickness of 0.1 mm (Fig. 16).

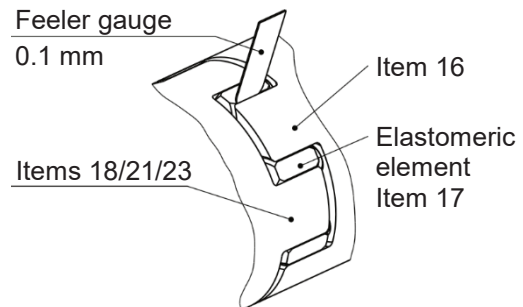


Fig. 16

If wear or damages are detected on the clutch in general, the affected components must be replaced immediately and the cause of the malfunction must be determined.

Causes of malfunctions could be:

- Excessive misalignment
- Excessive load (load alternations, start-up impacts, overload)
- Ambient influences

Wear or damage on the shaft coupling manifest themselves as:

- Noise development
- Troubled running behavior, vibration occurrences
- Formation of cracks on the components
- Warming
- Loosening of the components
- Buckling of the disk packs (Type 4196_._4_ _)
- Friction tracks



Should any irregularities occur, the system must be stopped independently of imminent maintenance and inspection intervals, and the cause of the malfunction must be determined using the Malfunctions / Breakdowns Table.

Disposal

Electronic components (Limit switch):

Products which have not been disassembled can be disposed of under Code No. 160214 (mixed materials) or components under Code No. 160216, or can be disposed of by a certified disposal firm.

Steel components:

Steel scrap (Code No. 160117)

All aluminum components:

Non-ferrous metals (Code No. 160118)

Seals, O-rings, V-seals, elastomers:

Plastic (Code No. 160119)

Guidelines and Directives for Operation in Areas Where There is a Danger of Explosion

Conditions to Observe in Areas Where There is a Danger of Explosion

For malfunction-free clutch operation, it is necessary to keep to the clutch characteristic values (Technical Data) indicated in Tables 1 to 17.

Clutch Dimensioning

A suitable adjustment factor (service factor) is required so that the clutch can protect the drive line from overload without excessive wear over a long lifetime. The service factor is the relationship between the maximum load torque on the system in normal operation and the set clutch torque. This factor must be at least 1.5 and is selected depending on the complex of loads acting on the system. Adjustment factors of up to 3 may be necessary for very severe impacts and load peaks or alternating loads.

Regular functional inspections on the clutch (see Maintenance Intervals) confirm the functioning, unworn condition of the clutch. Wear on the clutch can lead to changes in the switch-off torque, or even to clutch blockage.

On overload, the clutch run-out times must be limited via a limit switch capable of recognizing a clutch overload occurrence (usually with an inductive proximity switch for Ex-areas). Max. permitted run-out time: 3 min referring to the maximum permitted speed acc. Table 1. After overload has been registered, the sensor must emit a signal to stop the drive line. The blockage or malfunction must be removed.

CAUTION



Operation outside of the indicated characteristic data is not permitted. There is a danger of clutch destruction and of ignition.

Torque Adjustment

The clutch must only be adjusted within the specified torque range. The torque range is defined through the adjustment dimension "a" from 40 % to 100 %.

If the clutch is set outside of the permitted adjustment range, it is possible that the clutch will not actuate in case of overload. This means that the overload protection will be blocked. This does not mean that the clutch can directly cause ignition. However, if the system torque increases to an unpermitted value, component breakage can be expected.

The user must ensure via simulated disengagement of the clutch before initial operation that the clutch actuates at the required torque value after torque adjustment or torque changes have taken place.

CAUTION



Danger of ignition!

Re-engagement

Attention: Impacts using metal tools made of steel or aluminum are not to be used for re-engagement, as there is a danger of impact sparks. Tools made of plastic or bronze are suitable. Please observe the danger of electrostatic charging when using plastic tools. In general, please observe the Guidelines in EN 1127-1.

When using an automatic re-engagement mechanism, a locking device must be provided which guarantees free stroke on the thrust washer (5) in case of overload, even if re-engagement is actuated. Interfering contours which prevent the thrust washer (5) from disengaging or which are mounted especially for this purpose are not permitted. Free rotation of the clutch and free movement of the clutch components must be ensured before initial operation.

CAUTION



Danger of ignition!

Installation and Operational Instructions for EAS®-compact®-F overload clutch Type 419._._4._._ Sizes 4 and 5

(B.419.2.ATEX.EN)

Guidelines and Directives for Operation in Areas Where There is a Danger of Explosion

**EAS®-compact®-F overload clutch without
mounted coupling Type 4190._._4._._ and
EAS®-Compact® overload clutch with
ROBA®-DS mounted coupling
Type 4196._._4._._**

Classification of Areas Where There is a Danger of Explosion and Permitted Types According to the Directive 2014/34/EU

For the implementation of the Directive, the ignition protection type "c" (constructional safety) has been applied in accordance with DIN EN ISO 80079-36/37 and the letter "h" has been recorded in the classification.

Key designs and flange designs:

Dimensioning according to the requirements shaft diameter, transmittable torque and operating conditions must be carried out. To do this, the corresponding user data must be known or the user must carry out the dimensioning in accordance with the valid calculation basis (e.g. DIN 6892) for key connections and the permitted voltage values common in mechanical engineering. For the calculation, a yield point of $Re = 350 \text{ N/mm}^2$ should be used.

During initial operation, please make sure that the key is inserted correctly and that the clutch and the key are secured axially. According to the described clutch combinations and if the measures and guidelines described in the Installation and Operational Instructions are observed, the EAS®-compact®-F overload clutch is suitable for use in areas where there is a danger of explosion according to the category:

  II 2G Ex h IIC T5 $-15^\circ\text{C} \leq T_a \leq +80^\circ\text{C}$ Gb
II 2D Ex h IIIC T110°C $-15^\circ\text{C} \leq T_a \leq +80^\circ\text{C}$ Db

Permitted Types:

4190.55400 / 4190.65400 / 4190.75400 / 4190.85400 /
4196.55400 / 4196.65400 / 4196.75400 / 4196.85400 /
4196.55410 / 4196.65410 / 4196.75410 / 4196.85410 /
4196.55420 / 4196.65420 / 4196.75420 / 4196.85420 /
4196.55401 / 4196.65401 / 4196.75401 / 4196.85401 /
4196.55411 / 4196.65411 / 4196.75411 / 4196.85411 /
4196.55421 / 4196.65421 / 4196.75421 / 4196.85421 /
4196.55406 / 4196.65406 / 4196.75406 / 4196.85406 /
4196.55416 / 4196.65416 / 4196.75416 / 4196.85416 /
4196.55426 / 4196.65426 / 4196.75426 / 4196.85426

If the frictionally-locking hub types listed on the right are designed with additional key connections (option), they also accord with the category described here.



Designs with frictionally-locking shafts-hub connection:

If they are professionally mounted according to the regulations, backlash-free shaft-hub connections (hubs with cone bushing, clamping hubs and shrink disk hubs) on the overload clutch are secure connections.

Malfunctions are to be expected if parameters which cannot be influenced by the manufacturers affect the device (surface quality, strength class, shaft tolerance quality) and affect each other.

Designs with backlash-free shaft-hub connections are suitable, without an additional keyway

or without inspection of the transmittable torque in the system, **keeping to a calculator transmission reliability of at least $S = 2$** (see Tables 2, 12, 13 and 14), for application in areas in which there is a danger of explosion, category:

  II 3G Ex h IIC T5 $-15^\circ\text{C} \leq T_a \leq +80^\circ\text{C}$ Gc
II 3D Ex h IIIC T110°C $-15^\circ\text{C} \leq T_a \leq +80^\circ\text{C}$ Dc


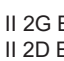
Permitted Types:

4190.52400 / 4190.62400 / 4190.70400 / 4190.80400 /
4196.52402 / 4196.62402 / 4196.72402 / 4196.82402 /
4196.52412 / 4196.62412 / 4196.72412 / 4196.82412 /
4196.52422 / 4196.62422 / 4196.72422 / 4196.82422 /
4196.52404 / 4196.62404 / 4196.72404 / 4196.82404 /
4196.52414 / 4196.62414 / 4196.72414 / 4196.82414 /
4196.52424 / 4196.62424 / 4196.72424 / 4196.82424 /
4196.52409 / 4196.62409 / 4196.72409 / 4196.82409 /
4196.52419 / 4196.62419 / 4196.72419 / 4196.82419 /
4196.52429 / 4196.62429 / 4196.72429 / 4196.82429

The values specified in Tables 2, 12, 13 and 14 for transmittable torques for cone bushings, clamping hubs and shrink disk hubs must be observed.

Furthermore, secure torque transmission is guaranteed if the respective customer-side application constellation is checked as to whether the torque transmission capability of the shaft-hub connection can be sufficiently guaranteed (at least 1.5 to the maximum torque on the system). This inspection must be repeated at regular intervals during maintenance work (see Maintenance).

In these conditions, clutch application is possible in the following areas:

  II 2G Ex h IIC T5 $-15^\circ\text{C} \leq T_a \leq +80^\circ\text{C}$ Gb X
II 2D Ex h IIIC T110°C $-15^\circ\text{C} \leq T_a \leq +80^\circ\text{C}$ Db X



The X at the end of the classification refers to the operating conditions for an inspection of the transmission reliability of the frictionally-locking shaft-hub connection.

Without this inspection, this classification is rendered invalid.

Installation and Operational Instructions for EAS[®]-compact[®]-F overload clutch Type 4196__4__ Sizes 4 and 5

(B.419.2.ATEX.EN)

Guidelines and Directives for Operation in Areas Where There is a Danger of Explosion

Conditions to Observe in Areas Where There is a Danger of Explosion for Type 4196__4__ (ROBA[®]-DS Mounted Coupling)



For malfunction-free clutch operation, it is necessary to keep to the clutch characteristic values indicated in the Technical Data.

CAUTION



Operation outside of the indicated characteristic data is not permitted. There is a danger of clutch destruction.

Furthermore, clutch malfunctions must be expected if the Installation Guidelines are not observed. The data stated in these Installation and Operational Instructions must be observed. All tightening torques must be observed. After having reached the specified Maintenance and Inspection Intervals, the tightening torques must be inspected using a torque wrench. If the specified torques are not observed, component movements due to metal contact and therefore warming up and formation of sparks must be expected. Constructional modifications of the clutch are not permitted.



You can find further information in the currently valid ATEX Installation and Operational Instructions for the ROBA[®]-DS coupling.

Clutch Dimensioning

For suitable clutch dimensioning, please observe the following points:

- a.) Coupling nominal torque
- b.) Coupling peak torque
- c.) Max. speed
- d.) Max. misalignment compensation capability
- e.) Ambient conditions (see Table 3)
- f.) Service factors (see page 17)

Clutch dimensioning according to the guidelines on page 17 is necessary for each application case. Changed operating parameters in the system require an inspection of the clutch dimensioning. Despite technical clutch dimensioning, system-dependent vibration excitations may occur during operation, which might lead to resonances and therefore to destructions of the ROBA[®]-DS coupling. On critical applications, the total load profile of the application must be run through during initial operation in order to confirm the suitability of the clutch in the application. Operation in an overcritical speed range and in the resonance range is not permitted.

CAUTION



No transverse forces may be introduced into the clutch which the clutch cannot compensate through flexible compensation. Permitted misalignments are to be observed. Type 4196__40_ clutches (single-jointed clutches) cannot compensate for radial shaft misalignments. If these clutches are installed in an arrangement with radial misalignment, enormously high restoring forces are generated which affect the clutch and the clutch mounted parts, including the bearings. Danger of component destruction and danger of ignition.

Installation and Operational Instructions for EAS®-compact®-F overload clutch Type 419._._4._ Sizes 4 and 5

(B.419.2.ATEX.EN)

Guidelines and Directives for Operation in Areas Where There is a Danger of Explosion

**EAS®-Compact®-F overload clutch with
ROBA®-ES mounted coupling
Type 4194._._4._**


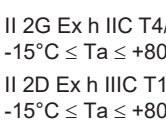
Classification of Areas Where There is a Danger of Explosion and Permitted Types According to the Directive 2014/34/EU

For the implementation of the Directive, the ignition protection type "c" (constructional safety) has been applied in accordance with DIN EN ISO 80079-36/37 and the letter "h" has been recorded in the classification.

Key designs:

Dimensioning according to the requirements shaft diameter, transmittable torque and operating conditions must be carried out. To do this, the corresponding user data must be known or the user must carry out the dimensioning in accordance with the valid calculation basis (e.g. DIN 6892) for key connections and the permitted voltage values common in mechanical engineering. For the calculation, a yield point of $Re = 350 \text{ N/mm}^2$ should be used.

During initial operation, please make sure that the key is inserted correctly and that the clutch and the key are secured axially. According to the described clutch combinations and if the measures and guidelines described in the Installation and Operational Instructions are observed, the EAS®-compact®-F overload clutch with a mounted ROBA®-ES elastomer coupling is suitable for use in areas where there is a danger of explosion according to the category:

 II 2G Ex h IIC T4/T5
-15°C ≤ Ta ≤ +80/60°C Gb
 II 2D Ex h IIIC T110°C
-15°C ≤ Ta ≤ +80/60°C Db


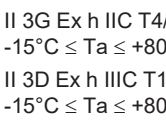
Permitted Types:
4194.55432 / 4194.65432 / 4194.75432 / 4194.85432 /
4194.55442 / 4194.65442 / 4194.75442 / 4194.85442 /
4194.55462 / 4194.65462 / 4194.75462 / 4194.85462 /

If the frictionally-locking hub types listed on the right are designed with additional key connections (option), they also accord with the category described here. A keyway as well as a safe torque transmission can be incorporated in these designs for the bore diameter of the clamping hubs (21) and shrink disk hubs (18) specified in Table 20.

Designs with frictionally-locking shafts-hub connection:

If they are professionally mounted according to the regulations, backlash-free shaft-hub connections (hubs with cone bushing, clamping hubs and shrink disk hubs) on the overload clutch are secure connections.

Malfunctions are to be expected if parameters which cannot be influenced by the manufacturers affect the device (surface quality, strength class, shaft tolerance quality) and affect each other. Designs with backlash-free shaft-hub connections are suitable, without an additional keyway or without inspection of the transmittable torque in the system, **keeping to a calculatory transmission reliability of at least $S = 2$** (see Tables 2, 8 and 9), for application in areas in which there is a danger of explosion, category:

 II 3G Ex h IIC T4/T5
-15°C ≤ Ta ≤ +80/60°C Gc
 II 3D Ex h IIIC T110°C
-15°C ≤ Ta ≤ +80/60°C Dc


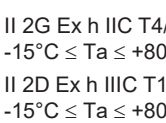
Permitted Types:

4194.52430 / 4194.62430 / 4194.72430 / 4194.82430 /
4194.52431 / 4194.62431 / 4194.72431 / 4194.82431 /
4194.52440 / 4194.62440 / 4194.72440 / 4194.82440 /
4194.52441 / 4194.62441 / 4194.72441 / 4194.82441 /
4194.52460 / 4194.62460 / 4194.72460 / 4194.82460 /
4194.52461 / 4194.62461 / 4194.72461 / 4194.82461

The values specified in Tables 2, 8 and 9 for transmittable torques for cone bushings, clamping hubs and shrink disk hubs must be observed.

Furthermore, secure torque transmission is guaranteed if the respective customer-side application constellation is checked as to whether the torque transmission capability of the shaft-hub connection can be sufficiently guaranteed (at least 1.5 to the maximum torque on the system). This inspection must be repeated at regular intervals during maintenance work (see Maintenance).

In these conditions, clutch application is possible in the following areas:

 II 2G Ex h IIC T4/T5
-15°C ≤ Ta ≤ +80/60°C Gb X
 II 2D Ex h IIIC T110°C
-15°C ≤ Ta ≤ +80/60°C Db X



The X at the end of the classification refers to the operating conditions for an inspection of the transmission reliability of the frictionally-locking shaft-hub connection. Without this inspection, this classification is rendered invalid.

Table 20

Permitted bore area for additional keyway [mm]		
Clamping hub Item 21	dmin	45
	dmax	80
Shrink disk hub Item 18	dmin	45
	dmax	75

Installation and Operational Instructions for EAS[®]-compact[®]-F overload clutch Type 419__4__ Sizes 4 and 5

(B.419.2.ATEX.EN)

Guidelines and Directives for Operation in Areas Where There is a Danger of Explosion

Conditions to Observe in Areas Where There is a Danger of Explosion for Type 4194__4__ Size 4 (ROBA[®]-ES Mounted Coupling)



For malfunction-free clutch operation, it is necessary to keep to the clutch characteristic values indicated in the Technical Data.

CAUTION



Operation outside of the indicated characteristic data is not permitted. There is a danger of clutch destruction.

Clutch Dimensioning

Suitable clutch dimensioning is necessary for a malfunction-free and extremely low-wear operation. Large shaft misalignments, in particular with high speeds and an alternating overall load configuration with high frequency, strain and heat up the elastomer material. Unpermittedly high overall load configuration, unpermittedly high speeds and unpermitted shaft misalignments can destroy the clutch.

CAUTION



Danger of ignition!

For suitable clutch dimensioning (see calculation on pages 18/19), please observe the following points:

- Coupling nominal torque
- Coupling peak torque
- Max. speed
- Max. shaft misalignments
- Ambient conditions (see Table 3)
- Service factors (see pages 18/19)



You can find more information in the currently valid ATEX Installation and Operational Instructions for the ROBA[®]-ES coupling.

The number and type of start-up impacts must be taken into account according to the clutch dimensioning guidelines (pages 18/19). Furthermore, elastomer heating may occur due to speed resonance. This must also be taken into account during clutch dimensioning. Changed operating parameters in the system require a renewed inspection of the clutch dimensioning. The maximum given ambient temperatures are to be kept to. The maximum surface temperature of the clutch changes in dependence of the ambient temperature, see clutch marking. Exceeding the permitted ambient temperature means a danger of elastomer destruction, or the maximum permitted surface temperature of the clutch is exceeded. With destroyed or heavily

worn elastomer there is the danger that the metallic claws of the hubs hit each other.

CAUTION



Danger of ignition!

Electrical potential equalization on the clutch must be possible via the mounted shaft ends using the motor or gearbox.

All screws must be secured against loosening using a sealing lacquer, e.g. Loctite 243.

Despite technical clutch dimensioning, system-dependent vibration excitations may occur during operation, which might lead to resonances and therefore to destructions on the clutch. On critical applications, the total load profile of the system must be run through during initial operation in order to confirm the suitability of the clutch in the system.

Furthermore, clutch malfunctions must be expected if the Installation Guidelines are not observed. The data stated in these Installation and Operational Instructions must be observed.

All tightening torques must be observed.

After having reached the specified Maintenance and Inspection Intervals, the tightening torques must be inspected using a torque wrench. If the specified torques are not observed, component movements due to metal contact and therefore warming up and formation of sparks must be expected.

Constructional modifications of the clutch are not permitted.

Conditions to Observe in Areas Where There is a Danger of Explosion for Type 4194__4__ Size 5 (Lastic (Nor-Mex[®]) Mounted Coupling)



Please observe the attached **Installation and Operational Instructions BAWN 060-EX (Nor-Mex[®] Size 240)**.

Maintenance and Inspection Intervals for

Clutches in Areas Where There is a Danger of Explosion



Please observe section Maintenance on page 20.

The maintenance and inspection intervals stated on page 20 and in the attached **Installation and Operational Instructions BAWN 060-EX** must be maintained.

Should any irregularities occur, the system must be stopped independently of imminent maintenance and inspection intervals, and the cause of the malfunction must be determined using the Malfunctions / Breakdowns Table.

Installation and Operational Instructions for EAS®-compact®-F overload clutch Type 419__4__ Sizes 4 and 5

(B.419.2.ATEX.EN)

Guidelines and Directives for Operation in Areas Where There is a Danger of Explosion

Initial Operation

If no stipulations regarding coating or other surface treatments have been made customer-side on order, the surfaces of clutch parts made of steel are protected by a phosphate coating. All other mounted and connection parts are left untreated. The clutch must only be used in areas protected from the weather. Additional corrosion protection is required for use in the open air or if the device is subject to weather conditions. Severely corroded clutch components mean a danger of ignition. The functional components of the clutch must not stick together as a result of paint or other sticky media, and electrostatic charges must not be caused (see DIN EN ISO 80079-36 6.7). A functional inspection must be carried out before initial operation. The penetration of dirt or dust influences the grease condition of the clutch and therefore its lifetime. Organic dust binds the grease filling and the lubrication qualities of the grease are lost. The clutch must be axially secured onto the shaft. Correct securement must be checked before initial operation.

Do not allow bending torques to be transmitted onto the pressure flange (4) when output elements (toothed belt wheel, sprocket wheels, flanges) are mounted onto the pressure flange (4).

Please observe the permitted thread screw-in depths (Table 17, page 11). If the screws inserted into the pressure flange (4) are too long, there is a danger of component destruction and therefore of ignition.

Overload clutches are rotating parts which can generate a risk of injury if touched or a risk of ignition due to impacts from foreign bodies should they not be properly secured by a cover.

The rotating clutch components must be protected against contact and against foreign body impacts. Please mount a suitable cover onto the clutch. The distance from the cover to the rotating components must be at least 5 mm. The cover must be electrically conductible.

Covers made of aluminum are not permitted.

Operation in dust layers or in piles of dust is not permitted.

Only minor radial and axial forces or transverse force torques are permitted to be transferred onto the clutch bearing (Table 3 / page 7).



Modifications of the clutch are not permitted. This also refers to changes to the cup spring layering.

Designs with ROBA®-DS, ROBA®-ES or Nor-Mex® mounted couplings must be axially secured onto the input and output shaft. Correct securement must be checked before initial operation.



Please also observe the attached **Installation and Operational Instructions BAWN 060-EX (Nor-Mex® Size 240)** for Type 4194__4__ Size 5.

The shafts and keys must be positioned in the clutches so that the neighboring clutch parts do not contact each other (Fig. 17/18).

It is essential that the distance dimension "E" for Type 4194__4__ acc. Fig. 9 and Table 7 is adhered to.

If the two clutch parts touch, there is a risk of ignition caused through friction.

In the key designs, please secure the locking set screw with sealing lacquer, e.g. Loctite 243.

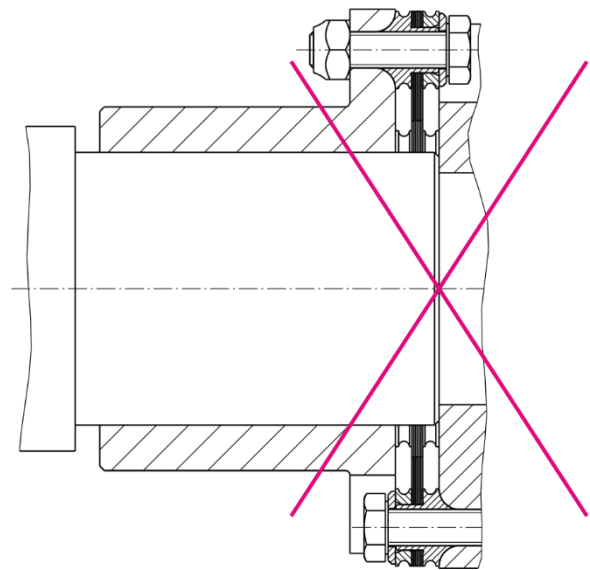


Fig. 17

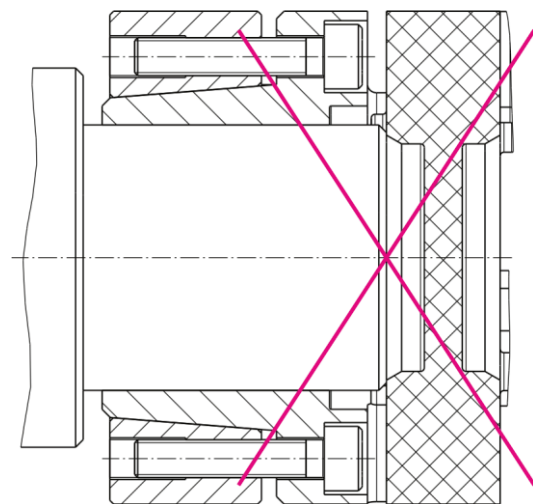



Fig. 18

Installation and Operational Instructions for EAS®-compact®-F overload clutch Type 419__4__ Sizes 4 and 5

(B.419.2.ATEX.EN)


Malfunctions / Breakdowns Type 4190__4__

Result of Malfunction	Possible Causes	Danger Guidelines for  Areas	Solutions
Premature clutch release	Incorrect torque adjustment	None	<ol style="list-style-type: none"> 1) Set the system out of operation 2) Check the torque adjustment 3) Secure the adjusting nut 4) If the cause of malfunction cannot be found, the clutch must be inspected at the place of manufacture
	Adjusting nut has changed position		
	Worn clutch		
Clutch does not release on overload	Incorrect torque adjustment	Danger of component destruction and related danger of ignition	<ol style="list-style-type: none"> 1) Set the system out of operation 2) Check whether foreign bodies influence the disengagement mechanism function 3) Check the torque adjustment 4) Secure the adjusting nut 5) If the cause of malfunction cannot be found, the clutch must be inspected at the place of manufacture
	Adjusting nut has changed position		
	Disengagement mechanism blocked by a foreign body		
	Worn clutch		
Running noises on overload occurrence as clutch slows down	Bearing on output flange is worn or has been previously damaged	Bearing heat-up to bearing destruction	<ol style="list-style-type: none"> 1) Set the system out of operation 2) Inspect the clutch at the place of manufacture
	Worn disengagement mechanism	Danger of ignition	
Running noises in normal operation	Insufficient clutch securement	Danger of ignition	<ol style="list-style-type: none"> 1) Set the system out of operation 2) Check the clutch securement 3) Check the screw tightening torques 4) Check the torque adjustment and that the adjusting nut sits securely
	Loosened screws		
	Loosened adjusting nut		

Installation and Operational Instructions for EAS®-compact®-F overload clutch Type 419__4__ Sizes 4 and 5

(B.419.2.ATEX.EN)


Malfunctions / Breakdowns Type 4194__4__ (Size 4)

Result of Malfunction	Possible Causes	Danger Guidelines for  Areas	Solutions
Changes in running noise and / or vibration occurrence	Incorrect alignment	Increased temperature on the elastomeric element surface; Danger of ignition due to hot surfaces	<ol style="list-style-type: none"> 1) Set the system out of operation 2) Find / resolve the cause of incorrect alignment (e. g. loose foundation screws, motor securement breakage, heat expansion of system components, changes in the coupling distance dimension "E") 3) Check the clutch for wear
	Wear on the elastomeric element, temporary torque transmission due to metal contact	Danger of ignition due to formation of sparks	<ol style="list-style-type: none"> 1) Set the system out of operation 2) Dismantle the clutch and remove the remainders of the elastomeric element 3) Check the clutch parts and replace if damaged 4) Insert a new elastomeric element, install clutch components 5) Check the alignment and correct if necessary
	Unbalance	Danger of ignition due to hot surfaces	<ol style="list-style-type: none"> 1) Set the system out of operation 2) Check the balance condition of the system components and correct if necessary 3) Check the clutch parts for wear 4) Check the alignment and correct if necessary
	Tensioning and clamping screws or locking set screw for axial hub securement or connection screws are loose	Danger of ignition due to hot surfaces and formation of sparks	<ol style="list-style-type: none"> 1) Set the system out of operation 2) Check the clutch alignment 3) Tighten the tensioning and clamping screws for axial hub securement and the connection screws to the required torque or tighten the locking set screw and secure it against self-loosening using sealing lacquer 4) Check the clutch for wear
Cam breakage	Wear on the elastomeric element, torque transmission due to metal contact	Danger of ignition due to hot surfaces and formation of sparks	<ol style="list-style-type: none"> 1) Set the system out of operation 2) Replace the entire clutch 3) Check the alignment
	Cam breakage due to high impact energy / overload / excessively high shaft misalignments	Danger of ignition due to hot surfaces and formation of sparks	<ol style="list-style-type: none"> 1) Set the system out of operation 2) Replace the entire clutch 3) Check the alignment 4) Find the cause of overload
	Operating parameters are not appropriate for the clutch performance	Danger of ignition due to hot surfaces and formation of sparks	<ol style="list-style-type: none"> 1) Set the system out of operation 2) Check the operating parameters and select a suitable clutch (observe installation space) 3) Install a new clutch 4) Check the alignment
	Operational mistakes due to clutch characteristic data being exceeded	Danger of ignition due to hot surfaces and formation of sparks	<ol style="list-style-type: none"> 1) Set the system out of operation 2) Check clutch dimensioning 3) Replace the entire clutch 4) Check the alignment 5) Train and advise operating personnel
Premature wear on the elastomeric element	Incorrect alignment	Increased temperature on the elastomeric element surface; Danger of ignition due to hot surfaces	<ol style="list-style-type: none"> 1) Set the system out of operation 2) Find / resolve the cause of incorrect alignment (e. g. loose foundation screws, motor securement breakage, heat expansion of system components, changes in the coupling distance dimension "E") 3) Check the clutch for wear

Installation and Operational Instructions for EAS®-compact®-F overload clutch Type 419__4__ Sizes 4 and 5

(B.419.2.ATEX.EN)

Malfunctions / Breakdowns Type 4194__4__ (Size 4 – continued)

Result of Malfunction	Possible Causes	Danger Guidelines for  Areas	Solutions
Premature wear on the elastomeric element	Incorrect alignment	Increased temperature on the elastomeric element surface; Danger of ignition due to hot surfaces	<ol style="list-style-type: none"> Set the system out of operation Find / resolve the cause of incorrect alignment (e. g. loose foundation screws, motor securement breakage, heat expansion of system components, changes in the coupling distance dimension "E") Check the clutch for wear
	e.g. contact with aggressive liquids / oils, ozone influences, excessively high ambient temperature etc., which lead to physical changes in the elastomeric element	Danger of ignition due to formation of sparks on metallic contact of the cams	<ol style="list-style-type: none"> Set the system out of operation Dismantle the clutch and remove the remainders of the elastomeric element Check the clutch parts and replace if damaged Insert a new elastomeric element, install clutch components Check the alignment and correct if necessary Make sure that further physical changes to the elastomeric element can be ruled out
	The ambient or contact temperatures permitted for the elastomeric element are exceeded	Danger of ignition due to formation of sparks on metallic contact of the cams	<ol style="list-style-type: none"> Set the system out of operation Dismantle the clutch and remove the remainders of the elastomeric element Check the clutch parts and replace if damaged Insert a new elastomeric element, install clutch components Check the alignment and correct if necessary Check the ambient or contact temperature and regulate them (if necessary, use other elastomeric element materials)
Premature wear on the elastomeric element (material liquification inside the elastomeric element toothing)	Drive vibrations	Danger of ignition due to formation of sparks on metallic contact of the cams	<ol style="list-style-type: none"> Set the system out of operation Dismantle the clutch and remove the remainders of the elastomeric element Check the clutch parts and replace if damaged Insert a new elastomeric element, install clutch components Check the alignment and correct if necessary Find the cause of vibration (if necessary, use an elastomeric element with a lower or higher shore hardness)

Malfunctions / Breakdowns Type 4194__4__ (Size 5)




Please observe the attached **Installation and Operational Instructions BAWN 060-EX (Nor-Mex® Size 240)**.

Installation and Operational Instructions for EAS®-compact®-F overload clutch Type 419__4__ Sizes 4 and 5

(B.419.2.ATEX.EN)

Malfunctions / Breakdowns Type 4196__4__

Result of Malfunction	Possible Causes	Danger Guidelines for  Areas	Solutions
Changes in running noise and / or vibration occurrence	Incorrect alignment, incorrect installation	Danger of ignition due to hot surfaces	1) Set the system out of operation 2) Find / resolve the cause of incorrect alignment 3) Check the clutch for wear
	Loose connecting screws, minor fretting corrosion under the screw head and on the disk pack	Danger of ignition due to hot surfaces	1) Set the system out of operation 2) Check the clutch parts and replace if damaged 3) Tighten the connecting screws to the specified torque 4) Check the alignment and correct if necessary
	Tensioning screws or locking set screw for axial securement of the hubs are loose	Danger of ignition due to hot surfaces and impact sparks	1) Set the system out of operation 2) Check the clutch alignment 3) Tighten the tensioning and clamping screws for axial hub securement to the required torque or tighten the locking set screw and secure it against self-loosening using sealing lacquer 4) Check the clutch for wear
Disk pack breakage	Disk pack breakage due to high load impacts / overload	Danger of ignition due to impact sparks	1) Set the system out of operation 2) Dismantle the clutch and remove the remainders of the disk packs 3) Check the clutch parts and replace if damaged 4) Find the cause of overload and remove it
	Operating parameters are not appropriate for the clutch performance	Danger of ignition due to impact sparks	1) Set the system out of operation 2) Check the operating parameters and select a suitable clutch (observe installation space) 3) Install a new clutch 4) Check the alignment
	Incorrect operation of the system unit	Danger of ignition due to impact sparks	1) Set the system out of operation 2) Dismantle the clutch and remove the remainders of the disk packs 3) Check the clutch parts and replace if damaged 4) Train and advise operating personnel
Disk packs / connecting screws cracks or breakage	Drive vibrations	Danger of ignition due to impact sparks	1) Set the system out of operation 2) Dismantle the clutch and remove the remainders of the disk packs 3) Check the clutch parts and replace if damaged 4) Check the alignment and correct if necessary 5) Find the cause of vibration and remove it



Please Observe!

mayr® will take no responsibility or guarantee for replacement parts and accessories which have not been delivered by mayr®, or for damage resulting from the use of these products.

EU Declaration of Conformity

According to the EU Directive on the harmonization of the laws of the Member States concerning devices and protective systems intended for use in areas where there is a danger of explosion (ATEX) 2014/34/EU, we:

**Chr. Mayr GmbH + Co. KG
Eichenstraße 1
D-87665 Mauerstetten**

hereby declare that the product described in these Installation and Operational Instructions

**EAS®-compact®-F overload clutch
Type 419_.__4_._X
Sizes 4 and 5**

has been developed, constructed and produced by us in accordance with the EU Directive named above.


Deposit Receipt: EX9A 010376 0002

Notified Body number: 0123

Applied Standards, Regulations and Inspections (ASRI)

- 1 DIN EN 1127-1: 2011-10
Explosive atmospheres - Explosion prevention and protection - Part 1: Basic concepts and methodology
- 2 DIN EN ISO 80079-36: 2016-12
Explosive atmospheres - Part 36: Non-electrical equipment for explosive atmospheres - Basic method and requirements
- 3 DIN EN ISO 80079-37: 2016-12
Explosive atmospheres - Part 37: Non-electrical equipment for explosive atmospheres
- Non-electrical type of protection constructional safety "c", control of ignition sources "b", liquid immersion "k"

Mauerstetten, June 2, 2023
Place / Date



Ferdinand Mayr, M. Sc.
(CEO)