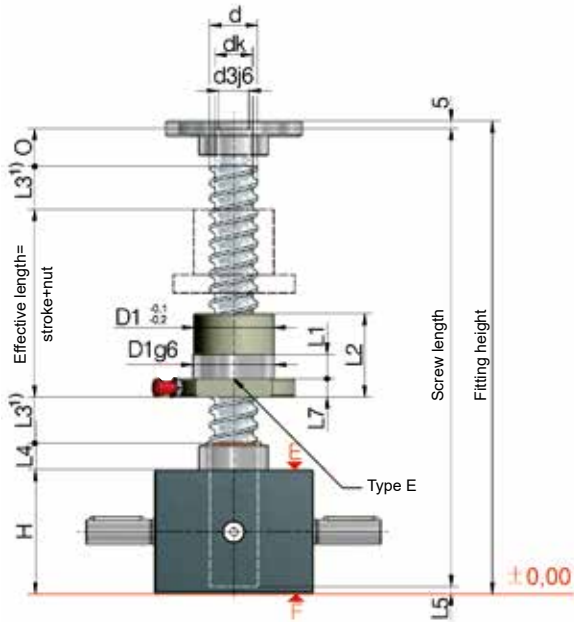


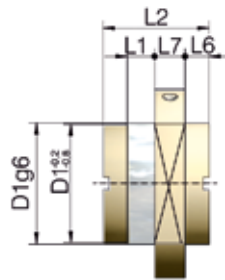


GSZ 50 to 150 kN

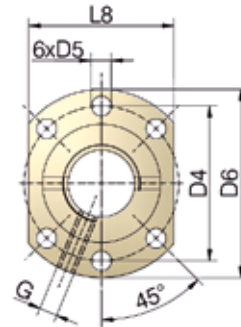
KGT-R | rotating screw



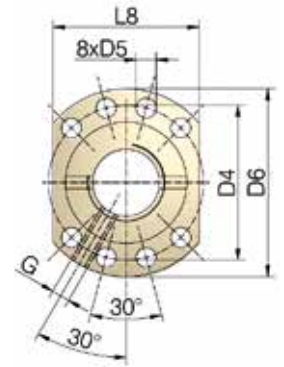
Position of the flange nut:
 G = flange gearbox side (as shown)
 S = flange screw side



Type S



Hole pattern 1
to DIN 69051



Hole pattern 2
to DIN 69051

Screw jacks	KGT Screw ØxP	Stroke per drive revolution		KGT Load rating kN		Nut		Lubrication hole G	Axial play max ⁹⁾ mm
		RN	RL	dyn. C ²⁾	stat. Co=C _{oa}	Type	Hole pattern		
GSZ-50	40x5	0,71	0,18	27,5	63,6	E	1	M6	0,06
	40x10	1,43	0,36	46,1	71,3	E	1	M8x1	0,06
	40x20	2,86	0,72	44	80,4	E	1	M8x1	0,06
	40x40	5,71	1,43	35	101,9	E	1	M8x1	0,06
GSZ-100	50x10	1,11	0,28	122,4	248,6	E	1	M8x1	0,06
	50x20	2,22	0,56	127,3	270,3	E	1	M8x1	0,06
	50x40	4,44	1,11	84,7	143,1	E	1	M8x1	0,06
	50x50 ⁴⁾	5,56	1,39	84,7	143,1	E	1	M8x1	0,03
GSZ-150	63x10	1,11	0,28	150,2	598,4	E	2	M8x1	0,03
	63x20	2,22	0,56	173,5 ⁵⁾	346,2	E	2	M8x1	0,03
	63x40	4,44	1,11	96,6	205,1	E	2	M8x1	0,03
	63x60 ³⁾	6,67	1,67	59,5	102,5	E	2	M8x1	0,03

Technical data

GSZ-50-R

max. compressive/tensile force, static:	50 kN (5 t)
Input speed:	1500 rpm / max. 1800 rpm
Gearbox operating temperature:	max. 60°C, higher on request
Moment of inertia:	N: 2,49 kg cm ² / L: 1,73 kg cm ²
Input torque (at 1500 rpm):	max. 31,5 Nm (N) / max. 10,4 Nm (L)
Drive-through torque:	max. 260 Nm
Gear ratio:	7:1 (Normal) / 28:1 (Low)
Housing material:	GGG-50, corrosion-resistant
Worm shaft:	steel, case-hardened, ground
Weight of screw jack body:	15 kg
Gearbox / Screw lubrication:	synthetic gear oil / grease lubrication

GSZ-150-R

max. compressive/tensile force, static:	150 kN (15 t)
Input speed:	1500 rpm / max. 1800 rpm
Gearbox operating temperature:	max. 60°C, higher on request
Moment of inertia:	N: 7,92 kg cm ² / L: 5,17 kg cm ²
Input torque (at 1500 rpm):	max. 75,1 Nm (N) / max. 20,7 Nm (L)
Drive-through torque:	max. 540 Nm
Gear ratio:	9:1 (Normal) / 36:1 (Low)
Housing material:	GGG-50, corrosion-resistant
Worm shaft:	steel, case-hardened, ground
Weight of screw jack body:	42 kg
Gearbox / Screw lubrication:	synthetic gear oil / grease lubrication

GSZ-100-R

max. compressive/tensile force, static:	100 kN (10 t)
Input speed:	1500 rpm / max. 1800 rpm
Gearbox operating temperature:	max. 60°C, higher on request
Moment of inertia:	N: 4,66 kg cm ² / L: 3,38 kg cm ²
Input torque (at 1500 rpm):	max. 53,4 Nm (N) / max. 13,5 Nm (L)
Drive-through torque:	max. 540 Nm
Gear ratio:	9:1 (Normal) / 36:1 (Low)
Housing material:	GGG-50, corrosion-resistant
Worm shaft:	steel, case-hardened, ground
Weight of screw jack body:	30 kg
Gearbox / Screw lubrication:	synthetic gear oil / grease lubrication

Ordering example: GSZ-100-RN-KGT 50x20, C = 127,3 kN



Because of the lack of friction, a holding brake is necessary: a motor brake or a spring pressure brake is required.

Screw: 1.1213 (Cf 53), induction hardened and polished. **Pitch accuracy:** 0,05 mm / 300 mm

Note

An increased screw can also be used for the rotating version.
(z.B.: GSZ-10-RN with screw 32*10)

Adapter for KGT:
Dimension sheet on request



Screw jacks	KGT Screw	Dimensions mm																
		ØxP	d	dk	d3j6	O	H	D1	D4	D5	D6	L1	L2	L3 ¹⁾	L4	L5	L6	L7
GSZ-50	40x5	39	36,4	25	30	116	63	78	9	93	10	57	15	19	7		14	70
	40x10	39	33,3	25	30	116	63	78	9	93	16	71	15	19	7		14	70
	40x20	39	34,3	25	30	116	63	78	9	93	16	80	30	19	7		14	70
	40x40	39	36,4	25	30	116	63	78	9	93	16	85	60	19	7	7,5	14	³⁾
GSZ-100	50x10	49	43,3	40	45	160	75	93	11	110	16	107	20	30	8		16	85
	50x20	49	43,3	40	45	160	85 ⁶⁾	103 ⁶⁾	11	120 ⁶⁾	16	125	40	30	8		16	95
	50x40	50	41,1	40	45	160	85 ⁶⁾	103 ⁶⁾	11	120 ⁶⁾	16	125	80	30	8		16	95
	50x50 ⁴⁾	50	41,1	40	45	160	85 ⁶⁾	103 ⁶⁾	11	120 ⁶⁾	16	145	100	30	8		16	95
GSZ-150	63x10	63	56,6	45	55	185	90	108	11	125	16	135	20	32	7		18	95
	63x20	63	51,8	45	55	185	95	115	13,5	135	25	135	40	32	7		20	100
	63x40	63	54,1	45	55	185	95	115	13,5	135	25	126	80	32	7		20	100
	63x60 ³⁾	63	54,1	45	55	185	95	115	13,5	135	25	126	120	32	7		20	100

1) Depending on the control system and drive, the dimension L3 and L4 can be reduced at your own discretion. An extension may be required if a bellows or spiral spring is fitted.

2) Dynamic load rating to DIN ISO 3408

3) Round flange

4) Non-preferred design

5) Reduced play 0,02 mm available on request

6) Not to DIN 69051