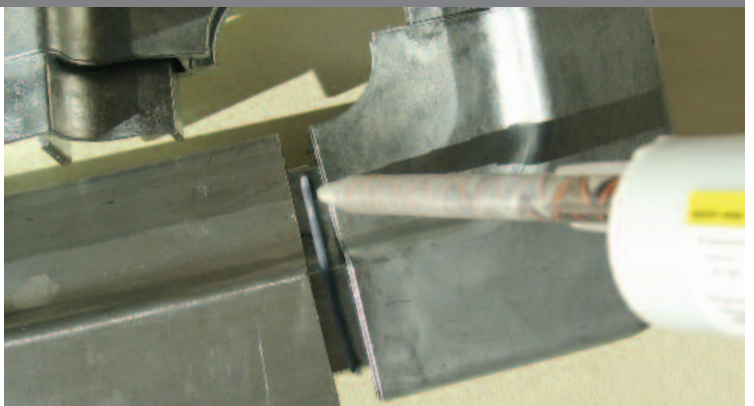


Sealing compounds // **Adhesives** // Cast resins

epple-adhesives. For the rapid, safe and resource-saving connection of different materials – in production, in the workshop and in building construction.



ADHESIVES





Sealing compounds // **Adhesives** // Cast resins

epple in fact bonds everything! Metal, plastic, wood, glass, rubber, stone and much more – there is always a solution with epple. Whether coarse or smooth, temperature sensitive or heat resistant. We connect entire material worlds.

ADHESIVES

About E. Epple & Co. GmbH

It started 70 years ago with a sealing compound for the waterproofing of flanges and tubes. Today we supply a varied range of **adhesives, sealing compounds and cast resins** all over the world.

Whether in vehicle construction or engineering, in electronics, in the chemical industry or in space technology – epple provides innovative solutions with conviction and tradition. For us, the fascination with bonding and waterproofing is to complete mechanical possibilities. And usually we exceed them. With this technological race against mechanics we are one step ahead in several fields, e. g. where environmental protection is concerned. Our sealing have been – compounds free from CHC – since 1978, epple came out with the first solvent-free duroplastic sealant. With success. Success for us, but above all for the environment and for our customers.

Just as fluent as our products are the transitions between adhesives and sealing compounds. It was therefore self-evident to also incorporate and to continuously extend our long experience into the production of cast resins and coating technologies. As a result, epple today also offers a comprehensive range of special cast resins for the electrical- and electronic industry.

Our linecard is wide and versatile. It ranges from standard products to customised solutions. In addition to the wide epple-product range we offer more than 100 unique and special inventions in our portfolio of adhesives, sealing compounds and cast resins. Their application possibilities vary from laminating resins in the GRP-sector via special applications in the construction of sports equipment to exceptional bondings in vehicle- or aircraft construction.

In order to always find the best solution for our customers, epple works closely with globally leading raw material manufacturers and research facilities, so that there are common patent applications with important companies of the chemical industry and long-time cooperation with renowned international institutes. From experts for experts. For mutual success.



About epple-adhesives

epple-adhesives. For the rapid, safe and resource-saving connection of different materials – in production, in the workshop and in building construction.

All-purpose adhesives don't exist, as every material is different. But epple nevertheless bonds everything: metal, plastic, wood, glass, rubber, stone and much more. All with all. Whether coarse or smooth, temperature sensitive or heat resistant. We connect entire material worlds. And because these material worlds are often as different as their requirements, we developed special adhesives for every kind of material and every possible bonding method. There are many innovative adhesives, summarised here in five product lines for you:

Product lines:

■ **epple-classics / page 6**

Our adhesive classics are available with or without solvents and in one- or two-component version. Their application possibilities are nearly unlimited. They differ depending on their place of installation, material type, form of operational demand and the way of application. This also includes **epple-easy / page 8**, the rapid and practical adhesion system for the two-component application by means of a cartridge pistol.

■ **epple-bond / page 10**

Fast polymerising one-component-adhesives for the safe instant bonding of metal, plastic and porous substrates.

■ **epple-loc / page 12**

These systems cure under exclusion of air and are likewise fast polymerising. They are suitable for the safe, efficient and solvent-free bonding of non-porous materials, e. g. for the protection of screw connections against vibration, impact and shock, as well as for the sealing of larger areas.

■ **epple-quick / page 14**

Innovative one-component adhesives with UV-technique. High-speed systems curing with UV-light and enabling perfect dosage for the efficient application in existent production processes. And all this in one-stop!

■ **epple-spezial / page 16**

The special adhesives. For industry, office, or very exceptional requirements in handcraft. Our specials range from our all-purpose adhesive Ultra, via our special instant glues to "Klebi", our artwork glue for the rising generation of craftsmen.

Frequently asked questions for the selection of the appropriate adhesive:

- Which materials need to be bonded?
- Are firm assembly parts or porous materials to be connected?
- Which thermal stress will be exposed the adhesive joint?
- Will the parts be exposed to aggressive chemicals?
- Which forces and strains will impact the bonding?

...and its professional application:

- Must the adhesive pour into narrow crevices or cracks?
- How long will the processing time be?
- How long must the bond harden?
- Are the components which need to be bonded exposed to high tension or extreme peeling?

General Information

For individual advice, please contact our technicians!

Adhering is the connecting technology of the 21st century – it unifies technological, economic and ecological benefits. Take advantage of it!



Our adhesives carry four-digit numeral descriptions – whose logic deciphers are as follows:

The first digit identifies the type of product

- 4... = one-component product
- 5... = two-component product

The second digit defines the chemical basis

- .1.. = Acrylate
- .2.. = Cyanoacrylate
- .5.. = Polyvinyl acetate
- .6.. = Epoxy
- .7.. = Polyurethane
- .8.. = Chloroprene

The third digit indicates whether, if the adhesive contains solvents

- | | |
|---------------------|----------------------|
| ..0. = solvent-free | ..5. = with solvents |
| ..1. = solvent-free | ..6. = with solvents |
| ..2. = solvent-free | ..7. = with solvents |
| ..3. = solvent-free | ..8. = with solvents |
| ..4. = solvent-free | ..9. = with solvents |

The fourth digit distinguishes adhesives of the same product group.

Example: epple 4551 is therefore a one-component product based on of polyvinyl acetate containing solvents.

epple-classics

epple-classics – the adhesive classics. The appropriate adhesive for all connections: matched to place of application, material type and expected strain.

Our product range is as versatile as your requirements. With our epple-classics line you can draw on plentiful resources: adhesives for every type of material, load and bonding. The choice is nearly unlimited. And all this with an eye on our environment. As gentle as possible, as functional as necessary! This is also the reason why the majority of our adhesives don't contain any solvents!

epple-adhesives are offered for every type of use: high and low temperatures, humidity and drought, aggressive media and extreme ageing, pressure and tension, shearing and peeling, bending and vibration. And also for nearly every type of material: from concrete to wood, leather and PVC to steel. Besides these standard products, we also develop special adhesives for your very individual requirements. Just get in touch with one of our experts - because you've come to the right place when high-quality solutions for challenging jobs are concerned!

Description

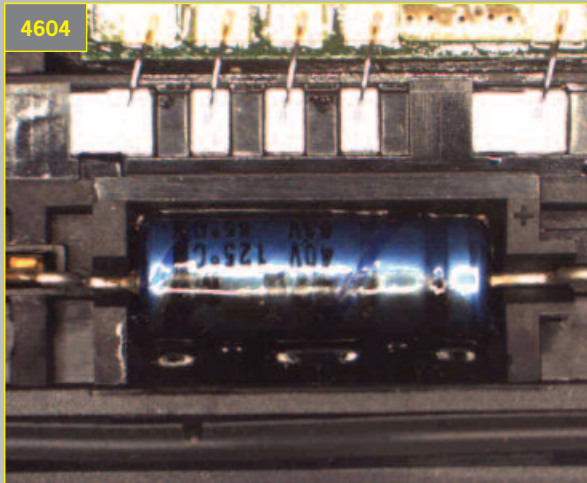
The classic within our product range convinces by its wide field of application, which can be divided into four groups: solvent-free and solvent-based adhesives, dispersions and epple-easy. Regardless of whether adhesives for rapid, small bondings of porous materials (epple 4551), special adhesives for metal (epple 5601) or high-viscous dispersion adhesives for hard-bonding substrates are concerned – our wide linecard offers the appropriate adhesive for nearly every challenge.

The range comprises both one-component and two-component adhesives. Whilst one-component adhesives don't need to be mixed and also don't need a second component for curing – mostly heat, light or air exclusion will do –, the two-component adhesives only work as a duo. Hence they are being supplied in two pails that need to be mixed prior application. In order to accelerate this process, we developed a two-component adhesion system with a handy cartridge pistol: epple-easy. It enables immediate application. Without long manual mixing.

epple-classics at a glance

- solvent-free and solvent-based one- and two-component adhesives
- high mechanical strengths on different surfaces
- good temperature- and chemical resistance
- many application possibilities by a broad spectrum of pot lifes, viscosities and adhesive strengths





epple 4604

Bonding of: metals and plastics

Requirements that are fulfilled:

high resistance against temperature changes
-40°C to +140°C, high elasticity, good adhesion
to polyamide and other plastic substrates, hardness
adjustable by the hardening parameters time and
temperature

epple 5602

Bonding of: metals

Requirements that are fulfilled:

high adhesive strength on metal, automatic dosage,
tough-elastic, long pot life for subsequent adjustment
of the assembly parts, resistant against humidity and
climatic influences, bonding strength adjustable by
tempering

Product	Solid content (%)	Adhesive strength wood/wood (N/mm ²)	Peel strength 180°C paper/paper (N/cm)
epple 4241	78	< 0,2	4,5
epple 4243	-	-	-
epple 4245	-	< 1,0	-
Product	Solid content (%)	Adhesive strength steel/steel (N/mm ²)	Peel strength 180°C rubber/rubber (N/cm)
epple 4551	38	1,1	0,9
epple 4751	37	4,2	6,2
epple 4851	36	0,7	1,4
epple 5752	40	6,3	1,0
epple 5851	25	2,2	breakage of assembly parts
epple 05246	38	6,3	1,0
Product	Pot life (min)	Adhesive strength steel/steel (N/mm ²)	Peel strength 180°C steel/steel (N/cm)
epple 1709	50	14	49
epple 4603	one-component	> 30	15
epple 4604	one-component	4	-
epple 4606	one-component	5,4	-
epple 5601	180	8	14
epple 5602	150	19	10
epple 5603	120	13	-
epple 5605	150	17	-
epple 5701	50	14	49
epple 5851	7 h	2,20	-

epple-classics

epple-easy – for waterproofing, bonding and casting. The practical adhesion system for the coeval application of two-components by means of a cartridge pistol.

epple-easy enables perfect handling for the two-component application. Thanks to the mixing device on the cartridge, the two components are mixed automatically during application – and this in the exact quantity that is respectively needed.

With this system you will save time even twice: epple-easy is ready for immediate use and provides a short curing time via its short reaction rates.

epple-easy is furthermore lightweight. The mini-pistol only weights 400 g, the maxi-pistol 1,8 kg – the perfect tool for continuous use.

Description

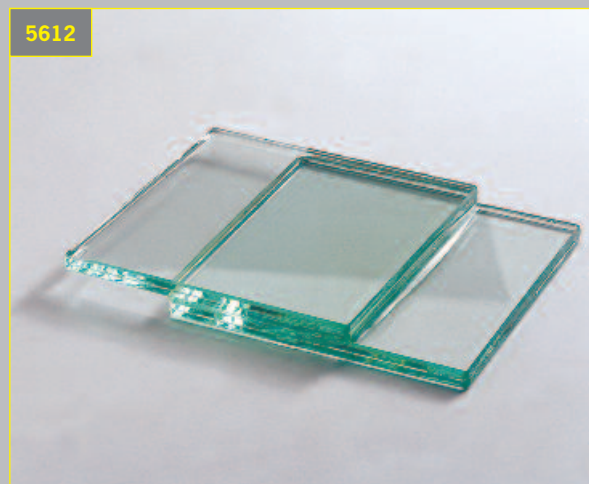
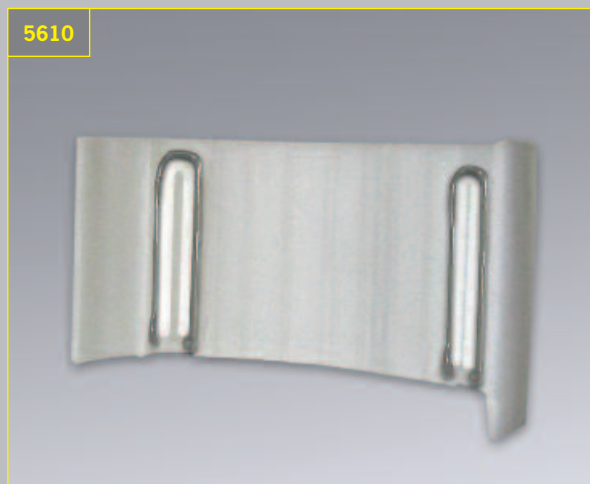
epple-easy: easy, quick and efficient. Attach the mixing device to the cartridge in just a few easy steps. Then insert the cartridge into the pistol, pump – and ready. The two components are mixed at the right mixing rate and – above all – in the sufficient quantity. You can apply the product immediately. The cartridge pistol will just mix as much material as you need. And if you have filler left in the cartridge after application – no problem! Just let the adhesive harden in the mixing device and simply exchange it for your next application. This ensures that the remaining cartridge content can be used up completely.

epple-easy offers many application possibilities: for the bonding of glass, metal, concrete, wood or steel, for the waterproofing of plastic, stone and metal or for the grouting of electronic units. Whether in the electrical industry, in engineering, vehicle- and plant construction, for steel- and metal processing or in building construction. Zero-emission. Solvent-free. Environmentally sound and reliable.

epple-easy at a glance

- broad spectrum of application possibilities
- ready for use without time consuming mixing
- simplest handling
- safe and tidy: no manual mixing and no mixing faults
- paintable – does not contain any silicone
- cost-effective – content can be used up over several applications
- environmentally sound, zero-emission, minimal wastage





epapple-easy 5610

Bonding of: metals, plastics and rubber

Requirements that are fulfilled:

fast-curing, low viscosity, high bonding capacity, resistant to environmental influences, e. g. humidity, temperature changes etc.

epapple-easy 5612

Bonding of: metals, also non-ferrous metals and light metals

Requirements that are fulfilled:

fast-curing, low viscosity, high bonding capacity, transparent, resistant to environmental influences, e. g. humidity, temperature changes etc.

Product	Pot life (min)	Adhesive strength steel/steel (N/mm ²)	Adhesive strength PA6/PA6 (N/mm ²)
epapple-easy 5610	20	16	0,6
epapple-easy 5612	20	20	1,7
epapple-easy 5620	3	12	1,5
epapple-easy 5621	10	13	3,6
epapple-easy 5710	10	7	2,2
epapple-easy 5711	40	9	2,8

epple-bond

Reliable all-purpose instant adhesives. Adhering – sticking – in the blink of an eye.

The one-component adhesives of our epple-bond line come into operation where time is short. These instant adhesives cure rapidly and last for ages. They result in adhesive joints with extraordinary mechanical strength and high adhesive power, even when exposed to temperature and chemicals.

epple-bond instant adhesives are ideal for the bonding of materials with a plane surface. The usual curing time of epple-bond adhesives is within seconds – depending on the type of material, atmospheric humidity or ambient temperature. Contact pressure reduces the adhesive gap and accelerates the curing process.

Description

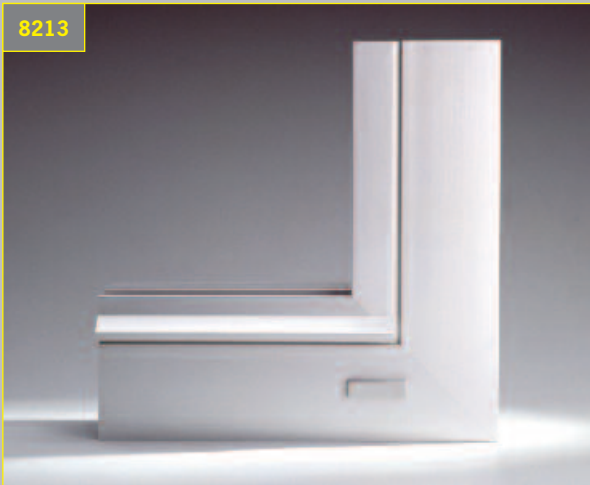
The application possibilities of epple-bond instant adhesive leave nothing to be desired. We definitely offer the appropriate adhesive for nearly every type of material. epple-bond products adhere steel, non-ferrous metal and light metal, as well as their compositions, but also non-metal materials like porcelain, ceramic, laminated paper, plastic, natural and composition caoutchouc, wood, cork, textiles, leather and many porous materials. Among each other and with each other.

As the initial strengths, e. g. the space of time until the assembly parts are no longer manoeuvrable, moves in the range of seconds, epple-bond adhesives are often also used as temporary fit-up aid. Depending on the type of material and adhesive used, the time to the achievement of the initial strength varies. Elastomers and plastics among each other cure considerably faster than pure metal/metal bondings. Thanks to their high resistance to chemicals and temperature, epple-bond adhesives are furthermore suitable for the additional protection of plastic bolts against extraordinary stresses and strains.

epple-bond at a glance

- solvent-free, fast polymerising and cold-setting one-component instant adhesive
- good mechanical strength and high adhesive power
- good resistance against temperature and chemicals
- wide range of application possibilities – bonds metal, porcelain, ceramic, laminated paper, plastic, indian rubber, wood, cork, textiles, leather and many porous materials
- tangible in 3 seconds (with plastics) to 2 minutes (metals)





epple-bond 8212

Bonding of: metals, elastomers and plastics

Requirements that are fulfilled:

very fast-curing, low viscosity, easy application, many application possibilities, broad viscosity spectrum within the product group

epple-bond 8213

Bonding of: metals, elastomers and plastics

Requirements that are fulfilled:

very fast-curing, low viscosity, easy application, many application possibilities, broad viscosity spectrum within the product group

Product	Viscosity (mPas)	Adhesive strength steel/steel (N/mm ²)	Time to tangibility EPDM/EPDM (s)	Time to tangibility steel/steel (s)
epple-bond 8210	15	18	1	20
epple-bond 8211	30	16	8	45
epple-bond 8212	30	18	2	25
epple-bond 8213	1.000	21	3	30
epple-bond 8214	80	15	9	40
epple-bond 8215	200	21	2	25

epple-loc adhesives pour into smallest cavities. They adhere, waterproof and protect against corrosion and then seize up.

All one-component adhesives in the epple-loc product line are fast polymerising, cold-setting and solvent-free. Adhesives that are applied where fastening, waterproofing and protection of metal materials is required.

Applied to the mounting parts in liquid form, these adhesives penetrate into the smallest spaces. Thanks to their excellent capillary action and enormous penetrability, epple-loc adhesives reliably fill even the smallest cavities. Whether particularly low viscous (e. g. epple-loc 2000) with a tangibility of up to 90 minutes, or in form of a high-viscous adhesive with shorter curing time (e. g. epple-loc 4035): all adhesives are easy to apply. The curing process starts – by the exclusion of oxygen – only when the assembly units are being connected. Thereafter the filled assembly crevices are resistant to impact and vibration and will reliably prevent any form of leakage.

Description

The adhesives of our epple-loc range can be applied in most different areas: for the protection of bolted joints against vibration, impact and shock or for the reliable waterproofing of threads in building construction. The adhesives prevent seizing up and improve the strength of the fittings. Mechanical fasteners and devices can be saved, corrosion by friction and crevice corrosion can be impeded. Thus epple-loc adhesives do not only take care of our environment, but also of your calculations.

epple-loc adhesives are supplied in flexible plastic bottles with practical dosage cap. With it the adhesive can be dosed properly and precisely to all surfaces free from oil, grease and dust.

epple-loc at a glance

- fast polymerising, cold-setting, one-component adhesive for the reliable protection and waterproofing of metal materials
- solvent-free
- versatile application possibilities
- viscosity from 10 mPas (epple-loc 2000) to 9000 mPas (epple-loc 3035)
- tangible within 15-90 minutes
- achievement of final strength within 14-30 hours
- thermal resistance to up to +150°C



For individual advice, please contact our technicians!



epple-loc 3500

Bonding of: metals

Requirements that are fulfilled:

protection of bolts against unscrewing, bonding and protection of shaft to collar connections, various strength classes (torsional break-offs from 5 Nm to 50 Nm), broad viscosity spectrum (low viscous to pasty), agglutinating tightly to avoid penetration of humidity or chemicals

epple-loc 6001

Bonding of: metals

Requirements that are fulfilled:

protection of bolts against unscrewing, bonding and protection of shaft to collar connections, various strength classes (torsional break-offs from 5 Nm to 50 Nm), broad viscosity spectrum (low viscous to pasty), agglutinating tightly to avoid penetration of humidity or chemicals

Product	Colour	Torsional break-off (Nm)	Viscosity (mPas)	Time to tangibility (min)	Final strength (h)
epple-loc 2000	yellow	15	10	60 - 90	24 - 30
epple-loc 2005	yellow	15	5.000	60 - 90	24 - 30
epple-loc 3150	red	30	200	60 - 90	24 - 30
epple-loc 3500	red	30	1000	60 - 90	24 - 30
epple-loc 3005	red	30	5000	60 - 90	24 - 30
epple-loc 4150	green	45	200	60 - 90	24 - 30
epple-loc 4500	green	45	1.000	60 - 90	24 - 30
epple-loc 6001	green	53	1.200	15 - 20	18 - 24
epple-loc 3500 A	violet	40	700	25 - 50	18 - 24
epple-loc 3500A/beschl.	violet	40	700	15 - 20	18 - 24
epple-loc 3035	green	15	9.000	25 - 50	18 - 24

epple-quick

epple-quick – - innovative one-component system. Adheres, waterproofs and protects thanks to UV-technology within seconds.

epple-quick comes into play when time is particularly short. This one-component system adheres, protects and waterproofs - within seconds. epple-quick is the efficient reply to rising demands in the laminating- and grouting technology. Thanks to an innovative UV-technique. For the adhesives and sealing compounds cure only when they are irradiated with UV-A or with visible light. This means: epple-quick gives you the flexibility you need. It gives you as much time as you may need to connect the assembly units - and cures then within seconds.

Thus you adhere with system. epple provides bonding solutions, which are being adjusted to your very individual products and manufacturing technology.

Description

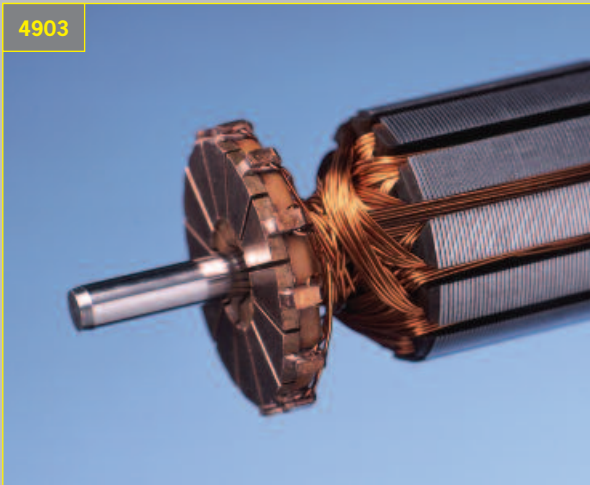
The application of epple-quick is quite simple. No mixing of several components. No restrictions with regards to the pot life. You will rather be able to dose even minimal quantities properly and exactly with this sophisticated bonding system. The gradual elastification from tough to strain-compensative allows durable bonding and the grouting of most different materials for many requirements. Thus epple-quick is predestined as adhesive and sealing compound for electrical engineering, electronics, optics, machine construction, medical engineering, appliance technology, precision mechanics, in glass construction or even for the furniture industry.

In addition, epple-quick adhesives are often used in automatic manufacturing processes. Particularly there, where extreme short station times are given. And in order to always fulfil your requirements to 100 %, we offer entire systems – composed of UV-adhesive/sealing compound/light-, dosage- and measuring technology – which you can combine in accordance to your needs. Also the installation into complex, fully automated equipments for serial production is possible.

epple-quick at a glance

- one-component adhesives, easy to apply
- broad application spectrum (glass, plastic, steel)
- can be integrated and automated individually into existing workflows
- no restrictions with regards to the pot life
- cures within seconds – saves time, energy and therewith costs
- short station times provide high performance
- nonwearing - thanks to low warming during the curing process





epple-quick 4903 fluorescent

Bonding of: metals

Requirements that are fulfilled:

one-component, fast curing with UV-light, safe dosage of even smallest quantities, optical quantity control of the adhesive applied, high adhesion strength on metal and plastic

epple-quick 4906

Bonding of: plastic

Requirements that are fulfilled:

fast curing with UV-light, safe dosage of even smallest quantities, high elasticity, good penetration into least foramina, good bonding to plastic and metals

Product	Viscosity (mPas)	Adhesive strength glass/glass (N/mm ²)	Hardness	
			Shore D	Shore A
epple-quick 4903	2.300	8,0	82	
epple-quick 4915	60.000	8,0	78	
epple-quick 4921	2.000	3,2	80	

epple-spezial

epple-spezial – the special adhesives. For the office and for the very exceptional requirements in industry and building construction.

Expert, master, hobbyist or child? Our special adhesives leave nothing to be desired: from our all-purpose adhesive Ultra, via special instant glues for polystyrene or sandpaper, to “Klebi”, our artwork glue for the rising generation of craftsmen. Besides these products we also develop special adhesives for your very individual convenience. Just get in contact with one of our experts - we'll surely find the right solution!

One of our focal points is the customised development of adhesives and the adjustment of existing epple-products to the requirements of our clientele. This results into products on solvent-free or solvent-based formulations. Our recipes rest upon epoxy, polyurethane, acrylate, caoutchouc etc.

Description

The epple-spezial line summarizes adhesives for very special and individual applications. Their composition is as different as their application. Their commonness is the fact, that every single product had been developed for certain special applications.

Therefore you will find here both the glue “klebi” for children, which is absolutely harmless and water-soluble, and our “grafic gum” for designers, which temporarily bonds something that is to be removed on a later stage. In addition we offer an adhesive for polystyrene in either solvent-free or solvent-based form, as well as an anti-skid coating for carpets, which prevents the annoying sliding.

epple-spezial at a glance

Customised solutions for special problems:

- bonding of polystyrene with epple 555/S (solvent-based), epple 822 (solvent-free)
- bonding of textiles for interior fittings of vehicles with epple 200/S
- bonding of spars in the construction of sports equipment with epple 05217
- adhesive “gum” for office and handicraft and adhesive “klebi” for children





epple 200/s toluene free

Bonding of: rubber and wood

Requirements that are fulfilled:

high initial strength, high ultimate strength, resistant against water and cleansing products, high elasticity, good processability

epple 05217

Verkleben von: plastic and wood

Anforderungen, die erfüllt werden:

long pot life for subsequent correction possibility, high adhesive strength on wood and GRP, high peel strength, high elasticity and water resistance, easy to spread

Product	Solid content (%)	Adhesive strength steel/steel (N/mm²)	Peel strength rubber/rubber (N/cm)
epple 200/S toluene free	25	0,6	8,4
epple 429/6	24	1,5	1,3
epple 4875	50	–	–
ultra all-purpose glue	35	1,1	< 0,2
gum	18	0,8	< 0,2
klebi	18	0,8	< 0,2
epple DT 60	58	–	2,0
epple HF	21	0,5	–
epple K 20 R	40	0,7	3,4
epple K 25 R	40	0,2	1,3
epple K 30 R	29	0,4	1,3
epple U 5	65	–	1,2
epple slide stop MGv	46	–	–
epple PVC 499/9	11	–	–

Organisation chart for adhesives

Basic product range of epple-adhesives

epple-classics

epple 4551
epple 4751
epple 4851
epple 5752
epple 5851
epple 05246

epple 1709 ●
epple 4603 ●
epple 4604 ●
epple 4606 ●
epple 5601 ●
epple 5602 ●
epple 5603 ●
epple 5605 ●
epple 5701 ●
epple 5851 ●

epple 4241 ●
epple 4243 ●
epple 4245 ●

epple-easy 5610 ●
epple-easy 5612 ●
epple-easy 5620 ●
epple-easy 5621 ●
epple-easy 5710 ●
epple-easy 5711 ●

epple-bond

epple-bond 8210 ●
epple-bond 8211 ●
epple-bond 8212 ●
epple-bond 8213 ●
epple-bond 8214 ●
epple-bond 8215 ●

epple-loc

epple-loc 2000 ●
epple-loc 2005 ●
epple-loc 3150 ●
epple-loc 3500 ●
epple-loc 3005 ●
epple-loc 4150 ●
epple-loc 4500 ●
epple-loc 6001 ●
epple-loc 3500 A ●
epple-loc 3500 A/beschl. ●
epple-loc 3035 ●

epple-quick

epple-quick 4903 ●
epple-quick 4915 ●
epple-quick 4921 ●

epple-spezial

epple 200/S toluene free
epple 429/6
epple 4875
ultra all-purpose glue
gum ●
klebi ●
epple DT 60 ●
epple HF
epple K 20 R
epple K 25 R
epple K 30 R
epple U 5
epple slide stop MGV
Nail Resin epple PVC 499/9

● solvent-free products

The adhesives mentioned in this brochure are an outline of the standards from our wide product portfolio. Besides these standard products, special adhesives can be developed and adjusted to your very individual convenience. Please contact one of our technicians. He will recommend the appropriate product to you.

Testing of adhesive strengths

Our possibilities:

- Tensile test acc. to DIN EN 26922
- Shear tension test acc. to DIN EN 1465
- Floating roller peel test acc. to DIN EN 1464
- T-peel test acc. to DIN EN 53282
- Climbing drum peel test acc. to DIN 53295
- Torsion test acc. to DIN EN ISO 10954
- Determination of the creep properties with the creep rupture test acc. to DIN EN ISO 899
- Determination of creep strength acc. to DIN 53284
- Surface cleavability (acc. to customer's prescription)
- Customised test assemblies etc.

Tensile Testing Machine



Further information

epple-sealing compounds are liquid – they provide quick, uncomplicated and reliable sealing

Liquid sealants come into play where solid sealants reach their limit, for liquid sealants entail decisive advantages: they adapt themselves to any substrate. This saves valuable time, as no extensive pre-treatment is necessary. This means in summary: no troublesome preparation of cavities, steps or notches – and no expensive storage of solid sealants.

The application spectrum of epple-sealants is cyclopaedic: regardless whether surfaces, e. g. gearboxes, flanges and housings, or on notches, convolutions and joints are concerned. But also joints in engineering, compression couplings or spot-welded constructions, folds and joints out of sheet steel will be sealed reliably with epple-sealing compounds. Also with extreme temperatures and high chemical or mechanical load.



epple-cast resins are reliable, stable and durable. They protect your components against humidity, dust and other contaminations.

Cast resins are reaction resins which particularly protect electronic devices: against mechanical damage, environmental influences, dust and humidity. They furthermore increase the mechanical stability of the sensors, condensers or entire control units subject to bonding and they ameliorate the heat conduction of these components.

The application possibilities of our cast resins are accordingly wide and versatile which increases the duties and demands on the products. From the processing via the curing to the properties of the later application area.

Our cast resins are available as one- or multi-component products, based either on epoxies or on polyurethanes. They show their particular strengths best when dealing with the respective field and type of application.

It's your choice! Our basic- and standard products already cover a multitude of exigencies. With even more specific requirements we will be glad to adjust our products to your very individual convenience.



waterproofing // bonding // grouting

Contact:

Application Technology:

+49 (0) 70 32/97 71-95

anwendungstechnik@epple-chemie.de

Sales Department:

Offers: +49 (0) 70 32/97 71-21

leppla@epple-chemie.de

Orders: +49 (0) 70 32/97 71-25

+49 (0) 70 32/97 71-28

auftragsabwicklung@epple-chemie.de

Trader's stamp



E. Epple & Co. GmbH

Sealing compounds // Adhesives // Cast resins
Hertzstrasse 8
D-71083 Herrenberg

Tel +49 (0) 70 32/97 71-0
Fax +49 (0) 70 32/97 71-50
E-Mail info@epple-chemie.de
Web www.epple-chemie.de

