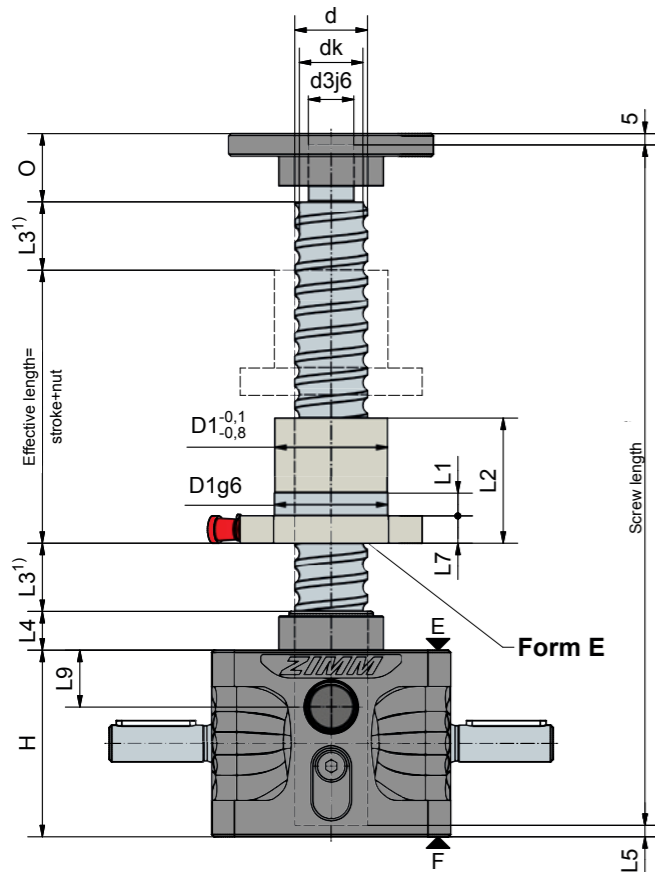
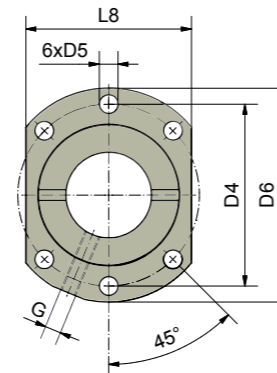
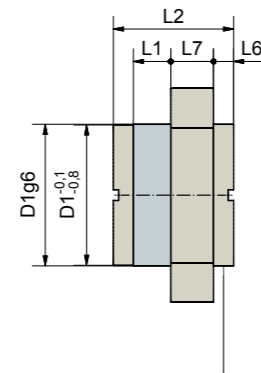


5 to 25 kN
KGT-R | rotating screw



Mounting side flange nut:
G = flange gearbox side (as shown)
S = flange screw side



arrangement of boreholes
1 to DIN 69051

Technical data

ZE-5-R

max. compressive/tensile force, static: 5 kN (0,5 t)
 Input speed: 1500 rpm / max. 3000 rpm
 Gearbox operating temperature: max. 60°C, higher on request
 Moment of inertia: N: 0,132 kg cm² / L: 0,091 kg cm²
 Input torque (at 1500 rpm): max. 4,7 Nm (N) / max. 1,5 Nm (L)
 Drive-through torque: max. 39 Nm
 Gear ratio: 4:1 (normal) / 16:1 (low-speed)
 Housing material: aluminium, corrosion-resistant
 Worm shaft: steel, case-hardened, ground
 Weight (screw jack): 1,2 kg
 Gearbox lubrication: synthetic fluid grease

ZE-10-R

max. compressive/tensile force, static: 10 kN (1 t)
 Input speed: 1500 rpm / max. 3000 rpm
 Gearbox operating temperature: max. 60°C, higher on request
 Moment of inertia: N: 0,361 kg cm² / L: 0,226 kg cm²
 Input torque (at 1500 rpm): max. 13,5 Nm (N) / max. 7,5 Nm (L)
 Drive-through torque: max. 57 Nm
 Gear ratio: 4:1 (normal) / 16:1 (low-speed)
 Housing material: aluminium, corrosion-resistant
 Worm shaft: steel, case-hardened, ground
 Weight (screw jack): 2,1 kg
 Gearbox lubrication: synthetic fluid grease

ZE-25-R

max. compressive/tensile force, static: 25 kN (2,5 t)
 Input speed: 1500 rpm / max. 3000 rpm
 Gearbox operating temperature: max. 60°C, higher on request
 Moment of inertia: N: 0,667 kg cm² / L: 0,443 kg cm²
 Input torque (at 1500 rpm): max. 18 Nm (N) / max. 10 Nm (L)
 Drive-through torque: max. 108 Nm
 Gear ratio: 6:1 (normal) / 24:1 (low-speed)
 Housing material: aluminium, corrosion-resistant
 Worm shaft: steel, case-hardened, ground
 Weight (screw jack): 3,8 kg
 Gearbox lubrication: synthetic fluid grease

Ordering example: ZE-10-RN-KGT 25x10, C = 25,2 kN - G



A holding brake is necessary due to the lack of self-locking: either a brake motor or spring-loaded brake can be used.
Screw: 1.1213 (Cf 53), hardened inductiv and polished. **Pitch precision:** 0,05 mm / 300 mm

Screw jacks	KGT Screw ØxP	Stroke per drive revolution		KGT load rating kN		Nut Type	Hole pattern	Lubrication-hole G	Axialplay max ⁵⁾ mm
		RN	RL	dyn. C ²⁾	stat. Co=C _{oa}				
ZE-5	16x5	1,25	0,31	10,1	12	E	1	M6	0,06
	16x10	2,50	0,63	11,1	12,9	E	1	M6	0,06
ZE-10	25x5	1,25	0,31	13,7	21,5	E	1	M6	0,06
	25x10	2,50	0,63	25,2	45,4	E	1	M6	0,06
	25x25	6,25	1,56	20,7	37,3	S	1	M6	0,06
	25x50	12,50	3,14	15,4	31,7	S	1	M6	0,06
ZE-25	32x5	0,83	0,21	24,8	49,7	E	1	M6	0,06
	32x10	1,67	0,42	30,8	45,6	E	1	M8x1	0,06
	32x20	3,33	0,83	32,9	47,1	E	1	M6	0,06
	32x40 ³⁾	6,67	1,67	14,9	32,4	S	N ⁴⁾	M6	0,06

Screw jacks	KGT Screw ØxP	Dimensions mm																	
		d	dk	d3j6	O	H	D1	D4	D5	D6	L1	L2	L3 ³⁾	L4	L5	L6	L7	L8	L9
ZE-5	16x5	15,5	12,9	12	15	62	28	38	5,5	48	10	42	15	12	8		10	40	18
	16x10	15,5	12,9	12	15	62	28	38	5,5	48	10	55	25	12	8		10	40	18
ZE-10	25x5	24,5	21,9	15	20	74	40	51	6,6	62	10	42	15	16	8		10	48	21
	25x10	24,5	21,9	15	20	74	40	51	6,6	62	16	55	25	16	8		10	48	21
	25x25	24,5	21,9	15	20	74	40	51	6,6	62	9	35	60	16	8	8	10	48	21
	25x50	24,5	21,9	15	20	74	40	51	6,6	62	10	58	125	16	8	10	10	48	21
ZE-25	32x5	31,5	28,9	20	25	82	50	65	9,00	80	10	55	15	17	5		12	62	25
	32x10	31,5	26,8	20	25	82	53 ⁶⁾	65	9,00	80	16	69	20	17	5		12	62	25
	32x20	31,5	26,8	20	25	82	53 ⁶⁾	65	9,00	80	16	80	35	17	5		12	62	25
	32x40 ³⁾	31,5	28,9	20	25	82	53 ⁶⁾	68 ⁶⁾	7,0 ⁶⁾	80	14	45	70	17	5	7,5	16	³⁾ 25	

An increased screw can also be used for the rotating version.

(such as: ZE-10-RN with screw 32x10)

1) An extension may be required if a bellows or spiral spring is fitted

2) Dynamic load rating to DIN 69051 part 4 draft: 1989

3) Round flange

4) Hole pattern on request

5) Reduced play 0,02 mm available on request

6) Not to DIN 69051