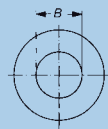
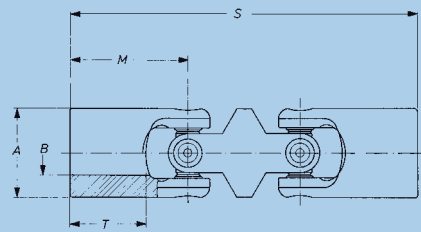
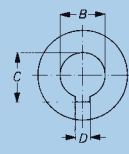


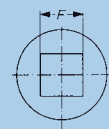
double, DIN 808, Needle bearing version



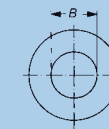
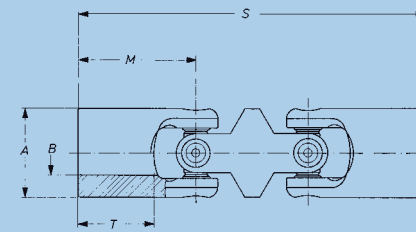
Standard bore



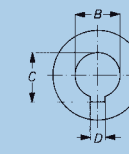
with key-way
DIN 6885 sheet 1



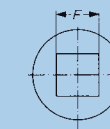
Inner square



Standard bore



with key-way
DIN 6885 sheet 1



Inner square

Precision Cardan Shafts, Standard bore

Precision Cardan Shafts, Bore with key-way DIN 6885, Sheet 1

Precision Cardan Shafts, Inner square

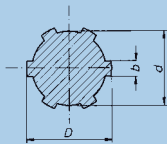
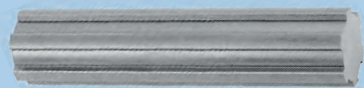
| Order number | | 0.616.300 | 0.620.300 | 0.625.300 | 0.632.300 | 0.640.300 | 0.650.300 | 0.663.300 | 0.616.303 | 0.620.303 |
|-----------------------|----|-----------|-----------|-----------|-----------|-----------|-----------|-----------|-----------|-----------|
| Md _{max} | Nm | 6 | 15 | 20 | 40 | 80 | 120 | 250 | 6 | 15 |
| Angle of deflection β | ° | 45 | 45 | 45 | 45 | 45 | 45 | 45 | 45 | 45 |
| Weight | kg | 0,08 | 0,14 | 0,24 | 0,50 | 0,95 | 1,71 | 3,06 | 0,08 | 0,14 |
| A | mm | 16 | 20 | 25 | 32 | 40 | 50 | 63 | 16 | 20 |
| *B ^{H7} | mm | 10 | 12 | 16 | 20 | 25 | 32 | 40 | 10 | 12 |
| *C ^{+0,2} | mm | – | – | – | – | – | – | – | 11,4 | 13,8 |
| *D ^{F9} | mm | – | – | – | – | – | – | – | 3 | 4 |
| *E ^{H9} | mm | – | – | – | – | – | – | – | – | – |
| M | mm | 26 | 31 | 37 | 43 | 54 | 66 | 83 | 26 | 31 |
| S | mm | 74 | 88 | 104 | 124 | 156 | 188 | 238 | 74 | 88 |
| T | mm | 15 | 18 | 22 | 25 | 32 | 40 | 50 | 15 | 18 |

| | 0.625.303 | 0.632.303 | 0.640.303 | 0.650.303 | 0.663.303 | 0.616.304 | 0.620.304 | 0.625.304 | 0.632.304 | 0.640.304 | 0.650.304 | 0.663.304 |
|--|-----------|-----------|-----------|-----------|-----------|-----------|-----------|-----------|-----------|-----------|-----------|-----------|
| | 20 | 40 | 80 | 120 | 250 | 6 | 15 | 20 | 40 | 80 | 120 | 250 |
| | 45 | 45 | 45 | 45 | 45 | 45 | 45 | 45 | 45 | 45 | 45 | 45 |
| | 0,24 | 0,50 | 0,95 | 1,71 | 3,06 | 0,08 | 0,14 | 0,24 | 0,50 | 0,95 | 1,71 | 3,06 |
| | 25 | 32 | 40 | 50 | 63 | 16 | 20 | 25 | 32 | 40 | 50 | 63 |
| | 16 | 20 | 25 | 32 | 40 | – | – | – | – | – | – | – |
| | 18,3 | 22,8 | 28,3 | 35,3 | 43,3 | – | – | – | – | – | – | – |
| | 5 | 6 | 8 | 10 | 12 | – | – | – | – | – | – | – |
| | – | – | – | – | – | 8 | 10 | 12 | 16 | 20 | 25 | 32 |
| | 37 | 43 | 54 | 66 | 83 | 26 | 31 | 37 | 43 | 54 | 66 | 83 |
| | 104 | 124 | 156 | 188 | 238 | 74 | 88 | 104 | 124 | 156 | 188 | 238 |
| | 22 | 25 | 32 | 40 | 50 | 15 | 18 | 22 | 25 | 32 | 40 | 50 |

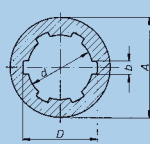
* = Customized bores, key-way and inner square dimensions possible
 Md_{max} = Max. permissible torque
 β = Max. angle of deflection per joint
 For application criteria and calculations refer to technical annex

0.600

0.600



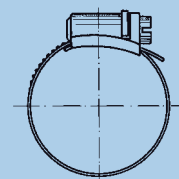
Spline Shafts DIN ISO 14



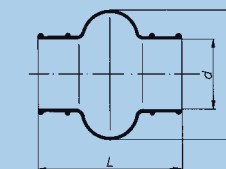
Spline Bore Hubs DIN ISO 14

Material: C40 k, 1.0511 oder C45 k, 1.0503
Material: 35 S 20 k, 1.0726

Material: 11SMnPb 30 k, 1.0718



Material: steel, zinc-plated or stainless steel, corrosion- and acid-resistant



Material: neoprene; temperature-resistant up to 100 °C

Also available with Spigots

Spline Shafts DIN ISO 14

| Order number | 1.000.524.001 | 1.000.524.002 | 1.000.524.003 | 1.000.524.004 | 1.000.524.005 | 1.000.524.007 | 1.000.524.006 |
|-----------------------------------|---------------|---------------|---------------|---------------|---------------|---------------|---------------|
| Designation | B 6 x 11 x 14 | B 6 x 16 x 20 | B 6 x 18 x 22 | B 6 x 21 x 25 | B 6 x 28 x 32 | B 6 x 28 x 34 | B 6 x 36 x 42 |
| D mm | 14 | 20 | 22 | 25 | 32 | 34 | 42 |
| d mm | 11 | 16 | 18 | 21 | 28 | 28 | 36 |
| b mm | 3 | 4 | 5 | 5 | 7 | 7 | 8 |
| Available in all lengths up to mm | 3000 | 3000 | 3000 | 3000 | 500* | 3000 | 500* |

Material: C40 k, 1.0511 oder C45 k, 1.0503
* = Material: 35 S 20 k, 1.0726

Spline Bore Hubs DIN ISO 14

| Order number | 1.000.511.001 | 1.000.511.002 | 1.000.511.003 | 1.000.511.004 | 1.000.511.005 | 1.000.511.007 | 1.000.511.006 |
|--------------|---------------|---------------|---------------|---------------|---------------|---------------|---------------|
| Designation | A 6 x 11 x 14 | A 6 x 16 x 20 | A 6 x 18 x 22 | A 6 x 21 x 25 | A 6 x 28 x 32 | A 6 x 28 x 34 | A 6 x 36 x 42 |
| D mm | 14 | 20 | 22 | 25 | 32 | 34 | 42 |
| d mm | 11 | 16 | 18 | 21 | 28 | 28 | 36 |
| b mm | 3 | 4 | 5 | 5 | 7 | 7 | 8 |
| A mm | 20 | 28 | 36 | 40 | 50 | 50 | 60 |
| Length* mm | 50 | 60 | 70 | 70 | 80 | 60 | 100 |

* = max. grip length even
Material: 11SMnPb 30 k, 1.0718

Hose Clips, steel, zinc-plated

| Order number | 1.000.961.011 | 1.000.961.029 | 1.000.961.003 | 1.000.961.006 | 1.000.961.012 | 1.000.961.013 | 1.000.961.014 | 1.000.961.010 |
|-------------------|-----------------------------|-----------------------|-----------------------|-----------------------|-----------------------|---------------|---------------|---------------|
| Joint-size | 0.716/0.816/ 0.720/0.820 | 0.824/0.725/ 0.828 | 0.732/0.832/ 0.836 | 0.740/0.840/ 0.845 | 0.750/0.850/ 0.855 | 0.860/0.865 | 0.870 | 0.880 |
| Clamping range mm | 12 – 20 | 20 – 32 | 25 – 40 | 32 – 50 | 40 – 60 | 50 – 70 | 60 – 80 | 70 – 90 |

Hose Clips, stainless steel, corrosion- and acid-resistant

| Order number | 1.000.961.020 | 1.000.961.022 | 1.000.961.023 | 1.000.961.024 | 1.000.961.025 | 1.000.961.026 | 1.000.961.027 | 1.000.961.028 |
|-------------------|-----------------------------|-----------------------|-----------------------|-----------------------|-----------------------|---------------|---------------|---------------|
| Joint-size | 0.716/0.816/ 0.720/0.820 | 0.824/0.725/ 0.828 | 0.732/0.832/ 0.836 | 0.740/0.840/ 0.845 | 0.750/0.850/ 0.855 | 0.860/0.865 | 0.870 | 0.880 |
| Clamping range mm | 12 – 20 | 20 – 32 | 25 – 40 | 32 – 50 | 40 – 60 | 50 – 70 | 60 – 80 | 70 – 90 |

Bellows

| Order number | 1.000.830.009 | 1.000.830.010 | 1.000.830.013 | 1.000.830.014 | 1.000.830.002 | 1.000.830.003 |
|--------------|---------------|---------------|---------------|---------------|---------------|---------------|
| Joint-size | 0.716/0.816 | 0.720/0.820 | 0.725/0.824 | 0.828 | 0.732/0.832 | 0.836 |
| L mm | 40 | 47 | 52 | 58 | 67 | 74 |
| D mm | 31 | 33 | 46 | 50 | 54 | 65 |
| d mm | 16 | 20 | 25 | 28 | 32 | 36 |

| 1.000.830.004 | 1.000.830.015 | 1.000.830.016 | 1.000.830.006 | 1.000.830.007 | 1.000.830.017 |
|---------------|---------------|---------------|---------------|---------------|---------------|
| 0.740/0.840 | 0.845 | 0.750/0.850 | 0.855/0.860 | 0.865/0.870 | 0.880 |
| 84 | 97 | 110 | 122 | 132 | 157 |
| 75 | 82 | 90 | 100 | 110 | 131 |
| 040 | 45 | 50 | 56 | 65 | 80 |