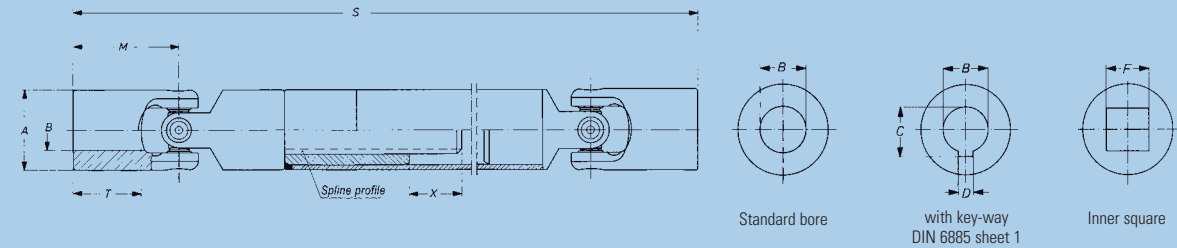
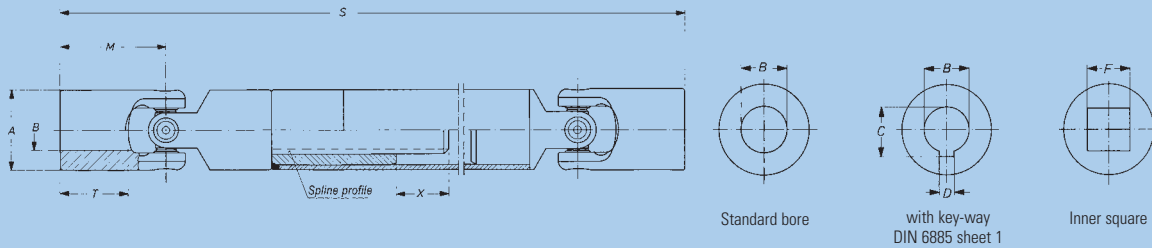


Needle bearing version, with length compensation

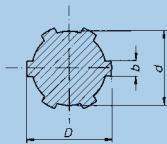
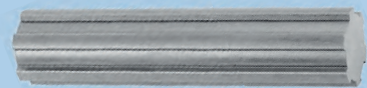


Please indicate compressed length „S“, extension and required type of flange when ordering!

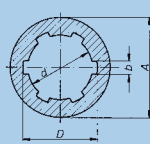
Order number	Precision Cardan Shafts, Standard bore					Precision Cardan Shafts, Bore with key-way DIN 6885, Sheet 1				Precision Cardan Shafts, Inner square					
	0.616.100	0.620.100	0.625.100	0.632.100	0.640.100	0.650.100	0.663.100	0.616.103	0.620.103	0.625.103	0.632.103	0.640.103	0.650.103	0.663.103	
Md _{max}	Nm	6	15	20	40	80	120	250	6	15	20	40	80	120	250
Angle of deflection β	°	45	45	45	45	45	45	45	45	45	45	45	45	45	45
Weight by S ₁	kg	0,20	0,33	0,59	1,09	2,13	4,0	8,25	0,20	0,33	0,59	1,09	2,13	4,0	8,25
Weight by S ₂	kg	0,24	0,39	0,68	1,21	2,28	4,44	8,75	0,24	0,39	0,68	1,21	2,28	4,44	8,75
Weight by S ₃	kg	0,26	0,42	0,72	1,35	2,57	4,98	9,70	0,26	0,42	0,72	1,35	2,57	4,98	9,70
A	mm	16	20	25	32	40	50	63	16	20	25	32	40	50	63
*B ^{H7}	mm	10	12	16	20	25	32	40	10	12	16	20	25	32	40
*C ^{+0.2}	mm	–	–	–	–	–	–	–	11,4	13,8	–	–	–	–	–
*D ^{P9}	mm	–	–	–	–	–	–	–	3	4	–	–	–	–	–
*E ^{H9}	mm	–	–	–	–	–	–	–	–	–	–	–	–	–	–
M	mm	26	31	37	43	54	66	83	26	31	37	43	54	66	83
S ₁ + X ₁	mm	165 + 15	174 + 20	198 + 25	234 + 30	301 + 40	372 + 50	475 + 70	165 + 15	174 + 20	198 + 25	234 + 30	301 + 40	372 + 50	475 + 70
S ₂ + X ₂	mm	185 + 30	194 + 40	228 + 55	264 + 60	321 + 60	422 + 100	505 + 100	185 + 30	194 + 40	228 + 55	264 + 60	321 + 60	422 + 100	505 + 100
S ₃ + X ₃	mm	210 + 60	224 + 70	248 + 75	294 + 90	371 + 110	472 + 150	585 + 180	210 + 60	224 + 70	248 + 75	294 + 90	371 + 110	472 + 150	585 + 180
T	mm	15	18	22	25	32	40	50	15	18	22	25	32	40	50
Spline profile	mm	6x7,5x10,2	6x11x14	6x11x14	6x16x20	6x21x25	6x28x34	6x36x42	6x7,5x10,2	6x11x14	6x11x14	6x16x20	6x21x25	6x28x34	6x36x42

These drive shafts are also available with rapid-change coupling.
 * = Customized bores, key-way and inner square dimensions possible
 Md_{max} = Max. permissible torque
 β = Max. angle of deflection per joint
 S₁
 S₂ = preferred lengths, compressed
 S₃
 X₁ = Maximum extension for S₁
 X₂ = Maximum extension for S₂
 X₃ = Maximum extension for S₃
 For application criteria and calculations refer to technical annex

Order number	Precision Cardan Shafts, Bore with key-way DIN 6885, Sheet 1					Precision Cardan Shafts, Inner square							
	0.625.103	0.632.103	0.640.103	0.650.103	0.663.103	0.616.104	0.620.104	0.625.104	0.632.104	0.640.104	0.650.104	0.663.104	
Md _{max}	Nm	20	40	80	120	250	6	15	20	40	80	120	250
Angle of deflection β	°	45	45	45	45	45	45	45	45	45	45	45	45
Weight by S ₁	kg	0,59	1,09	2,13	4,0	8,25	0,20	0,33	0,59	1,09	2,13	4,0	8,25
Weight by S ₂	kg	0,68	1,21	2,28	4,44	8,75	0,24	0,39	0,68	1,21	2,28	4,44	8,75
Weight by S ₃	kg	0,72	1,35	2,57	4,98	9,70	0,26	0,42	0,72	1,35	2,57	4,98	9,70
A	mm	25	32	40	50	63	16	20	25	32	40	50	63
*B ^{H7}	mm	16	20	25	32	40	–	–	–	–	–	–	–
*C ^{+0.2}	mm	18,3	22,8	28,3	35,3	43,3	–	–	–	–	–	–	–
*D ^{P9}	mm	5	6	8	10	12	–	–	–	–	–	–	–
*E ^{H9}	mm	–	–	–	–	–	8	10	12	16	20	25	32
M	mm	37	43	54	66	83	26	31	37	43	54	66	83
S ₁ + X ₁	mm	198 + 25	234 + 30	301 + 40	372 + 50	475 + 70	165 + 15	174 + 20	198 + 25	234 + 30	301 + 40	372 + 50	475 + 70
S ₂ + X ₂	mm	228 + 55	264 + 60	321 + 60	422 + 100	505 + 100	185 + 30	194 + 40	228 + 55	264 + 60	321 + 60	422 + 100	505 + 100
S ₃ + X ₃	mm	248 + 75	294 + 90	371 + 110	472 + 150	585 + 180	210 + 60	224 + 70	248 + 75	294 + 90	371 + 110	472 + 150	585 + 180
T	mm	22	25	32	40	50	15	18	22	25	32	40	50
Spline profile	mm	6x11x14	6x16x20	6x21x25	6x28x34	6x36x42	6x7,5x10,2	6x11x14	6x11x14	6x16x20	6x21x25	6x28x34	6x36x42



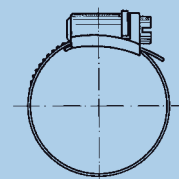
Spline Shafts DIN ISO 14



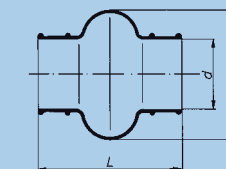
Spline Bore Hubs DIN ISO 14

Material: C40 k, 1.0511 oder C45 k, 1.0503
Material: 35 S 20 k, 1.0726

Material: 11SMnPb 30 k, 1.0718



Material: steel, zinc-plated or stainless steel, corrosion- and acid-resistant



Material: neoprene; temperature-resistant up to 100 °C

Also available with Spigots

Spline Shafts DIN ISO 14

Order number	1.000.524.001	1.000.524.002	1.000.524.003	1.000.524.004	1.000.524.005	1.000.524.007	1.000.524.006
Designation	B 6 x 11 x 14	B 6 x 16 x 20	B 6 x 18 x 22	B 6 x 21 x 25	B 6 x 28 x 32	B 6 x 28 x 34	B 6 x 36 x 42
D mm	14	20	22	25	32	34	42
d mm	11	16	18	21	28	28	36
b mm	3	4	5	5	7	7	8
Available in all lengths up to mm	3000	3000	3000	3000	500*	3000	500*

Material: C40 k, 1.0511 oder C45 k, 1.0503
* = Material: 35 S 20 k, 1.0726

Spline Bore Hubs DIN ISO 14

Order number	1.000.511.001	1.000.511.002	1.000.511.003	1.000.511.004	1.000.511.005	1.000.511.007	1.000.511.006
Designation	A 6 x 11 x 14	A 6 x 16 x 20	A 6 x 18 x 22	A 6 x 21 x 25	A 6 x 28 x 32	A 6 x 28 x 34	A 6 x 36 x 42
D mm	14	20	22	25	32	34	42
d mm	11	16	18	21	28	28	36
b mm	3	4	5	5	7	7	8
A mm	20	28	36	40	50	50	60
Length* mm	50	60	70	70	80	60	100

* = max. grip length even
Material: 11SMnPb 30 k, 1.0718

Hose Clips, steel, zinc-plated

Order number	1.000.961.011	1.000.961.029	1.000.961.003	1.000.961.006	1.000.961.012	1.000.961.013	1.000.961.014	1.000.961.010
Joint-size	0.716/0.816/ 0.720/0.820	0.824/0.725/ 0.828	0.732/0.832/ 0.836	0.740/0.840/ 0.845	0.750/0.850/ 0.855	0.860/0.865	0.870	0.880
Clamping range mm	12 – 20	20 – 32	25 – 40	32 – 50	40 – 60	50 – 70	60 – 80	70 – 90

Hose Clips, stainless steel, corrosion- and acid-resistant

Order number	1.000.961.020	1.000.961.022	1.000.961.023	1.000.961.024	1.000.961.025	1.000.961.026	1.000.961.027	1.000.961.028
Joint-size	0.716/0.816/ 0.720/0.820	0.824/0.725/ 0.828	0.732/0.832/ 0.836	0.740/0.840/ 0.845	0.750/0.850/ 0.855	0.860/0.865	0.870	0.880
Clamping range mm	12 – 20	20 – 32	25 – 40	32 – 50	40 – 60	50 – 70	60 – 80	70 – 90

Bellows

Order number	1.000.830.009	1.000.830.010	1.000.830.013	1.000.830.014	1.000.830.002	1.000.830.003
Joint-size	0.716/0.816	0.720/0.820	0.725/0.824	0.828	0.732/0.832	0.836
L mm	40	47	52	58	67	74
D mm	31	33	46	50	54	65
d mm	16	20	25	28	32	36

1.000.830.004	1.000.830.015	1.000.830.016	1.000.830.006	1.000.830.007	1.000.830.017
0.740/0.840	0.845	0.750/0.850	0.855/0.860	0.865/0.870	0.880
84	97	110	122	132	157
75	82	90	100	110	131
040	45	50	56	65	80