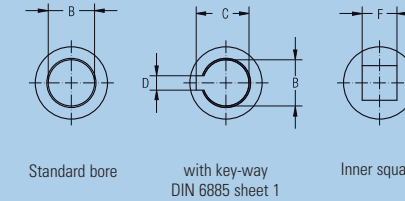
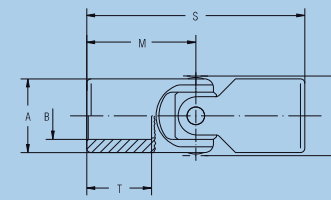
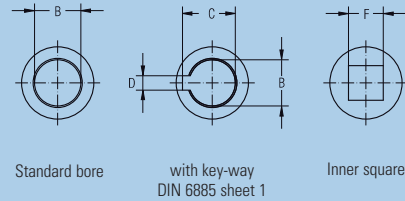
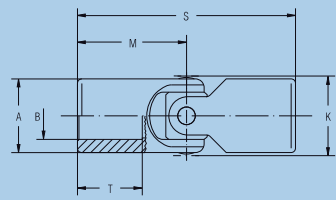


single, DIN 808



Cross Joints, single, Standard bore | Cross Joints, single, Bore with key-way DIN 6885, Sheet 1 | Cross Joints, single, Inner square

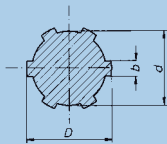
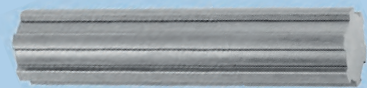
Order number	0.713.400	0.716.400	0.720.400	0.725.400	0.732.400	0.740.400	0.750.400	0.763.400	0.713.403	0.716.403
Md _{max} Nm	6	8	20	30	60	160	290	450	6	8
Angle of deflection β °	45	45	45	45	45	45	45	45	45	45
Weight kg	0,03	0,05	0,10	0,16	0,31	0,61	1,15	2,38	0,03	0,05
A mm	13	16	20	25	32	40	50	63	13	16
*B ^{H7} mm	8	10	12	16	20	25	32	40	8	10
*C ^{+0.2} mm	–	–	–	–	–	–	–	–	9	11,4
*D ^{F9} mm	–	–	–	–	–	–	–	–	2	3
*F ^{H9} mm	–	–	–	–	–	–	–	–	–	–
K mm	14	17,5	21,5	26,5	33,5	42	52,5	65	14	17,5
M mm	21	26	31	37	43	54	66	83	21	26
S mm	42	52	62	74	86	108	132	166	42	52
T mm	12	15	18	22	25	32	40	50	12	15

0.720.403	0.725.403	0.732.403	0.740.403	0.750.403	0.763.403	0.713.404	0.716.404	0.720.404	0.725.404	0.732.404	0.740.404	0.750.404	0.763.404
20	30	60	160	290	450	6	8	20	30	60	160	290	450
45	45	45	45	45	45	45	45	45	45	45	45	45	45
0,10	0,16	0,31	0,61	1,15	2,38	0,03	0,05	0,10	0,16	0,31	0,61	1,15	2,38
20	25	32	40	50	63	13	16	20	25	32	40	50	63
12	16	20	25	32	40	–	–	–	–	–	–	–	–
13,8	18,3	22,8	28,3	35,3	43,3	–	–	–	–	–	–	–	–
4	5	6	8	10	12	–	–	–	–	–	–	–	–
–	–	–	–	–	–	6	8	10	12	16	20	25	32
21,5	26,5	33,5	42	52,5	65	14	17,5	21,5	26,5	33,5	42	52,5	65
31	37	43	54	66	83	21	26	31	37	43	54	66	83
62	74	86	108	132	166	42	52	62	74	86	108	132	166
18	22	25	32	40	50	12	15	18	22	25	32	40	50

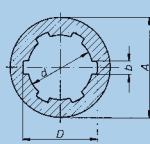
* = Customized bores, key-ways and inner square dimensions possible
 Md_{max} = Max. permissible torque (when using material 1.4057 divide the Md_{max}-value in halves)
 β = Max. angle of deflection per joint
 For application criteria and calculations refer to technical annex

0.700

0.700



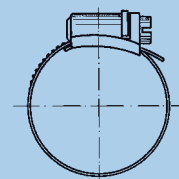
Spline Shafts DIN ISO 14



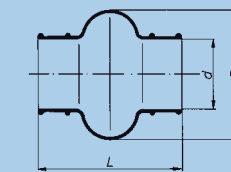
Spline Bore Hubs DIN ISO 14

Material: C40 k, 1.0511 oder C45 k, 1.0503
Material: 35 S 20 k, 1.0726

Material: 11SMnPb 30 k, 1.0718



Material: steel, zinc-plated or stainless steel, corrosion- and acid-resistant



Material: neoprene; temperature-resistant up to 100 °C

Also available with Spigots

Spline Shafts DIN ISO 14

Order number	1.000.524.001	1.000.524.002	1.000.524.003	1.000.524.004	1.000.524.005	1.000.524.007	1.000.524.006
Designation	B 6 x 11 x 14	B 6 x 16 x 20	B 6 x 18 x 22	B 6 x 21 x 25	B 6 x 28 x 32	B 6 x 28 x 34	B 6 x 36 x 42
D	mm 14	mm 20	mm 22	mm 25	mm 32	mm 34	mm 42
d	mm 11	mm 16	mm 18	mm 21	mm 28	mm 28	mm 36
b	mm 3	mm 4	mm 5	mm 5	mm 7	mm 7	mm 8
Available in all lengths up to	mm 3000	mm 3000	mm 3000	mm 3000	mm 500*	mm 3000	mm 500*

Material: C40 k, 1.0511 oder C45 k, 1.0503
* = Material: 35 S 20 k, 1.0726

Spline Bore Hubs DIN ISO 14

Order number	1.000.511.001	1.000.511.002	1.000.511.003	1.000.511.004	1.000.511.005	1.000.511.007	1.000.511.006
Designation	A 6 x 11 x 14	A 6 x 16 x 20	A 6 x 18 x 22	A 6 x 21 x 25	A 6 x 28 x 32	A 6 x 28 x 34	A 6 x 36 x 42
D	mm 14	mm 20	mm 22	mm 25	mm 32	mm 34	mm 42
d	mm 11	mm 16	mm 18	mm 21	mm 28	mm 28	mm 36
b	mm 3	mm 4	mm 5	mm 5	mm 7	mm 7	mm 8
A	mm 20	mm 28	mm 36	mm 40	mm 50	mm 50	mm 60
Length*	mm 50	mm 60	mm 70	mm 70	mm 80	mm 60	mm 100

* = max. grip length even
Material: 11SMnPb 30 k, 1.0718

Hose Clips, steel, zinc-plated

Order number	1.000.961.011	1.000.961.029	1.000.961.003	1.000.961.006	1.000.961.012	1.000.961.013	1.000.961.014	1.000.961.010
Joint-size	0.716/0.816/ 0.720/0.820	0.824/0.725/ 0.828	0.732/0.832/ 0.836	0.740/0.840/ 0.845	0.750/0.850/ 0.855	0.860/0.865	0.870	0.880
Clamping range	mm 12 – 20	mm 20 – 32	mm 25 – 40	mm 32 – 50	mm 40 – 60	mm 50 – 70	mm 60 – 80	mm 70 – 90

Hose Clips, stainless steel, corrosion- and acid-resistant

Order number	1.000.961.020	1.000.961.022	1.000.961.023	1.000.961.024	1.000.961.025	1.000.961.026	1.000.961.027	1.000.961.028
Joint-size	0.716/0.816/ 0.720/0.820	0.824/0.725/ 0.828	0.732/0.832/ 0.836	0.740/0.840/ 0.845	0.750/0.850/ 0.855	0.860/0.865	0.870	0.880
Clamping range	mm 12 – 20	mm 20 – 32	mm 25 – 40	mm 32 – 50	mm 40 – 60	mm 50 – 70	mm 60 – 80	mm 70 – 90

Bellows

Order number	1.000.830.009	1.000.830.010	1.000.830.013	1.000.830.014	1.000.830.002	1.000.830.003
Joint-size	0.716/0.816	0.720/0.820	0.725/0.824	0.828	0.732/0.832	0.836
L	mm 40	mm 47	mm 52	mm 58	mm 67	mm 74
D	mm 31	mm 33	mm 46	mm 50	mm 54	mm 65
d	mm 16	mm 20	mm 25	mm 28	mm 32	mm 36

1.000.830.004	1.000.830.015	1.000.830.016	1.000.830.006	1.000.830.007	1.000.830.017
0.740/0.840	0.845	0.750/0.850	0.855/0.860	0.865/0.870	0.880
84	97	110	122	132	157
75	82	90	100	110	131
040	45	50	56	65	80