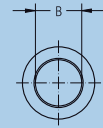
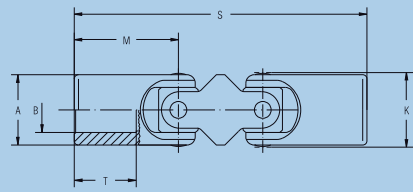
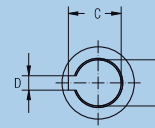


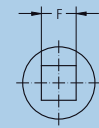
double, DIN 808



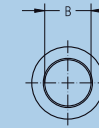
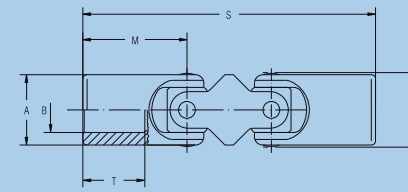
Standard bore



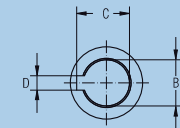
with key-way
DIN 6885 sheet 1



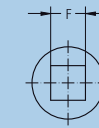
Inner square



Standard bore



with key-way
DIN 6885 sheet 1



Inner square

Cross Joints, double, Standard bore

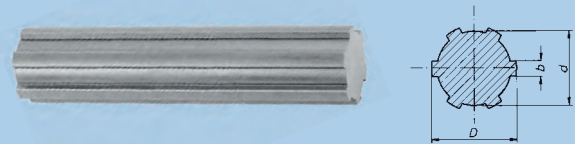
Cross Joints, double, Bore with key-way DIN 6885, Sheet 1

Cross Joints, double, Inner square

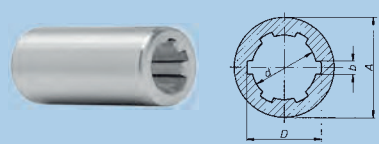
Order number		0.713.300	0.716.300	0.720.300	0.725.300	0.732.300	0.740.300	0.750.300	0.763.300	0.713.303	0.716.303
Md _{max}	Nm	6	8	20	30	60	160	290	450	6	8
Angle of deflection β	°	45	45	45	45	45	45	45	45	45	45
Weight	kg	0,04	0,08	0,14	0,24	0,50	0,95	1,71	3,51	0,04	0,08
A	mm	13	16	20	25	32	40	50	63	13	16
*B ^{H7}	mm	8	10	12	16	20	25	32	40	8	10
*C ^{+0.2}	mm	–	–	–	–	–	–	–	–	9	11,4
*D ^{F9}	mm	–	–	–	–	–	–	–	–	2	3
*E ^{H9}	mm	–	–	–	–	–	–	–	–	–	–
K	mm	14	17,5	21,5	26,5	33,5	42	52,5	65	14	17,5
M	mm	21	26	31	37	43	54	66	83	21	26
S	mm	60	74	88	104	124	156	188	238	60	74
T	mm	12	15	18	22	25	32	40	50	12	15

	0.720.303	0.725.303	0.732.303	0.740.303	0.750.303	0.763.303	0.713.304	0.716.304	0.720.304	0.725.304	0.732.304	0.740.304	0.750.304	0.763.304
Md _{max}	20	30	60	160	290	450	6	8	20	30	60	160	290	450
Angle of deflection β	45	45	45	45	45	45	45	45	45	45	45	45	45	45
Weight	0,14	0,24	0,50	0,95	1,71	3,51	0,04	0,08	0,14	0,24	0,50	0,95	1,71	3,51
A	20	25	32	40	50	63	13	16	20	25	32	40	50	63
*B ^{H7}	12	16	20	25	32	40	–	–	–	–	–	–	–	–
*C ^{+0.2}	13,8	18,3	22,8	28,3	35,3	43,3	–	–	–	–	–	–	–	–
*D ^{F9}	4	5	6	8	10	12	–	–	–	–	–	–	–	–
*E ^{H9}	–	–	–	–	–	–	6	8	10	12	16	20	25	32
K	21,5	26,5	33,5	42	52,5	65	14	17,5	21,5	26,5	33,5	42	52,5	65
M	31	37	43	54	66	83	21	26	31	37	43	54	66	83
S	88	104	124	156	188	238	60	74	88	104	124	156	188	238
T	18	22	25	32	40	50	12	15	18	22	25	32	40	50

* = Customized bores, key-ways and inner square dimensions possible
 Md_{max} = Max. permissible torque (when using material 1.4057 divide the Md_{max}-value in halves)
 β = Max. angle of deflection per joint
 For application criteria and calculations refer to technical annex



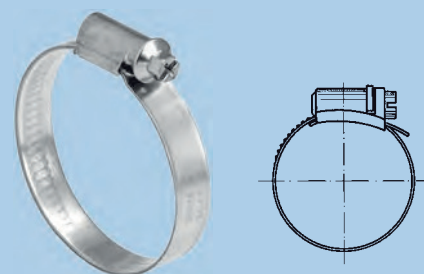
Spline Shafts DIN ISO 14



Spline Bore Hubs DIN ISO 14

Material: C40 k, 1.0511 oder C45 k, 1.0503
Material: 35 S 20 k, 1.0726

Material: 11SMnPb 30 k, 1.0718



Material: steel, zinc-plated or stainless steel, corrosion- and acid-resistant



Material: neoprene; temperature-resistant up to 100 °C

Also available with Spigots

Spline Shafts DIN ISO 14

Order number	1.000.524.001	1.000.524.002	1.000.524.003	1.000.524.004	1.000.524.005	1.000.524.007	1.000.524.006
Designation	B 6 x 11 x 14	B 6 x 16 x 20	B 6 x 18 x 22	B 6 x 21 x 25	B 6 x 28 x 32	B 6 x 28 x 34	B 6 x 36 x 42
D	mm 14	mm 20	mm 22	mm 25	mm 32	mm 34	mm 42
d	mm 11	mm 16	mm 18	mm 21	mm 28	mm 28	mm 36
b	mm 3	mm 4	mm 5	mm 5	mm 7	mm 7	mm 8
Available in all lengths up to	mm 3000	mm 3000	mm 3000	mm 3000	mm 500*	mm 3000	mm 500*

Material: C40 k, 1.0511 oder C45 k, 1.0503
* = Material: 35 S 20 k, 1.0726

Spline Bore Hubs DIN ISO 14

Order number	1.000.511.001	1.000.511.002	1.000.511.003	1.000.511.004	1.000.511.005	1.000.511.007	1.000.511.006
Designation	A 6 x 11 x 14	A 6 x 16 x 20	A 6 x 18 x 22	A 6 x 21 x 25	A 6 x 28 x 32	A 6 x 28 x 34	A 6 x 36 x 42
D	mm 14	mm 20	mm 22	mm 25	mm 32	mm 34	mm 42
d	mm 11	mm 16	mm 18	mm 21	mm 28	mm 28	mm 36
b	mm 3	mm 4	mm 5	mm 5	mm 7	mm 7	mm 8
A	mm 20	mm 28	mm 36	mm 40	mm 50	mm 50	mm 60
Length*	mm 50	mm 60	mm 70	mm 70	mm 80	mm 60	mm 100

* = max. grip length even
Material: 11SMnPb 30 k, 1.0718

Hose Clips, steel, zinc-plated

Order number	1.000.961.011	1.000.961.029	1.000.961.003	1.000.961.006	1.000.961.012	1.000.961.013	1.000.961.014	1.000.961.010
Joint-size	0.716/0.816/ 0.720/0.820	0.824/0.725/ 0.828	0.732/0.832/ 0.836	0.740/0.840/ 0.845	0.750/0.850/ 0.855	0.860/0.865	0.870	0.880
Clamping range	mm 12 – 20	mm 20 – 32	mm 25 – 40	mm 32 – 50	mm 40 – 60	mm 50 – 70	mm 60 – 80	mm 70 – 90

Hose Clips, stainless steel, corrosion- and acid-resistant

Order number	1.000.961.020	1.000.961.022	1.000.961.023	1.000.961.024	1.000.961.025	1.000.961.026	1.000.961.027	1.000.961.028
Joint-size	0.716/0.816/ 0.720/0.820	0.824/0.725/ 0.828	0.732/0.832/ 0.836	0.740/0.840/ 0.845	0.750/0.850/ 0.855	0.860/0.865	0.870	0.880
Clamping range	mm 12 – 20	mm 20 – 32	mm 25 – 40	mm 32 – 50	mm 40 – 60	mm 50 – 70	mm 60 – 80	mm 70 – 90

Bellows

Order number	1.000.830.009	1.000.830.010	1.000.830.013	1.000.830.014	1.000.830.002	1.000.830.003
Joint-size	0.716/0.816	0.720/0.820	0.725/0.824	0.828	0.732/0.832	0.836
L	mm 40	mm 47	mm 52	mm 58	mm 67	mm 74
D	mm 31	mm 33	mm 46	mm 50	mm 54	mm 65
d	mm 16	mm 20	mm 25	mm 28	mm 32	mm 36

1.000.830.004	1.000.830.015	1.000.830.016	1.000.830.006	1.000.830.007	1.000.830.017
0.740/0.840	0.845	0.750/0.850	0.855/0.860	0.865/0.870	0.880
84	97	110	122	132	157
75	82	90	100	110	131
040	45	50	56	65	80