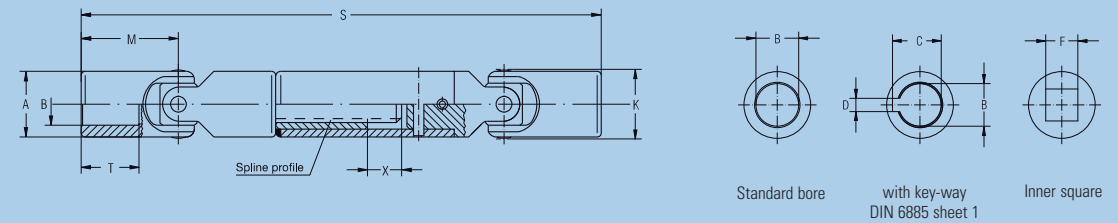
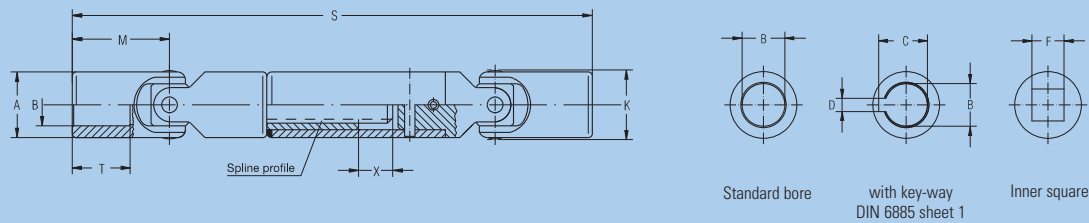


with length compensation

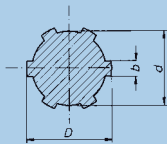
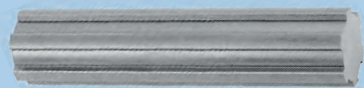


Please indicate compressed length „S“, extension and required type of flange when ordering!

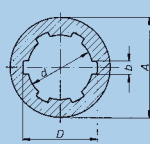
Order number	Cross Cardan Shafts, Standard bore							Cross Cardan Shafts, Bore with key-way DIN 6885, Sheet 1	
	0.716.100	0.720.100	0.725.100	0.732.100	0.740.100	0.750.100	0.763.100	0.716.103	0.720.103
Md _{max}	8	20	30	60	160	290	450	8	20
Angle of deflection β	45	45	45	45	45	45	45	45	45
Weight by S ₁	0,20	0,33	0,59	1,09	2,13	4,0	8,24	0,20	0,33
Weight by S ₂	0,24	0,39	0,68	1,21	2,28	4,44	8,74	0,24	0,39
Weight by S ₃	0,26	0,42	0,72	1,35	2,57	4,98	9,72	0,26	0,42
A	16	20	25	32	40	50	63	16	20
*B ^{H7}	10	12	16	20	25	32	40	10	12
*C ^{+0,2}	–	–	–	–	–	–	–	11,4	13,8
*D ^{P9}	–	–	–	–	–	–	–	3	4
*F ^{H9}	–	–	–	–	–	–	–	–	–
K	17,5	21,5	26,5	33,5	42	52,5	65	17,5	21,5
M	26	31	37	43	54	66	83	26	31
S ₁ + X ₁	165 + 15	174 + 20	198 + 25	234 + 30	301 + 40	372 + 50	475 + 70	165 + 15	174 + 20
S ₂ + X ₂	185 + 30	194 + 40	228 + 55	264 + 60	321 + 60	422 + 100	505 + 100	185 + 30	194 + 40
S ₃ + X ₃	210 + 60	224 + 70	248 + 75	294 + 90	371 + 110	472 + 150	585 + 180	210 + 60	224 + 70
T	15	18	22	25	32	40	50	15	18
Spline profile	6x7,5x10,2	6x11x14	6x11x14	6x16x20	6x21x25	6x28x34	6x36x42	6x7,5x10,2	6x11x14

Order number	Cross Cardan Shafts, Bore with key-way DIN 6885, Sheet 1					Cross Cardan Shafts, Inner square						
	0.725.103	0.732.103	0.740.103	0.750.103	0.763.103	0.716.104	0.720.104	0.725.104	0.732.104	0.740.104	0.750.104	0.763.104
Md _{max}	30	60	160	290	450	8	20	30	60	160	290	450
Angle of deflection β	45	45	45	45	45	45	45	45	45	45	45	45
Weight by S ₁	0,59	1,09	2,13	4,0	8,24	0,20	0,33	0,59	1,09	2,13	4,0	8,24
Weight by S ₂	0,68	1,21	2,28	4,44	8,74	0,24	0,39	0,68	1,21	2,28	4,44	8,74
Weight by S ₃	0,72	1,35	2,57	4,98	9,72	0,26	0,42	0,72	1,35	2,57	4,98	9,72
A	25	32	40	50	63	16	20	25	32	40	50	63
*B ^{H7}	16	20	25	32	40	–	–	–	–	–	–	–
*C ^{+0,2}	18,3	22,8	28,3	35,3	43,3	–	–	–	–	–	–	–
*D ^{P9}	5	6	8	10	12	–	–	–	–	–	–	–
*F ^{H9}	–	–	–	–	–	8	10	12	16	20	25	32
K	26,5	33,5	42	52,5	65	17,5	21,5	26,5	33,5	42	52,5	65
M	37	43	54	66	83	26	31	37	43	54	66	83
S ₁ + X ₁	198 + 25	234 + 30	301 + 40	372 + 50	475 + 70	165 + 15	174 + 20	198 + 25	234 + 30	301 + 40	372 + 50	475 + 70
S ₂ + X ₂	228 + 55	264 + 60	321 + 60	422 + 100	505 + 100	185 + 30	194 + 40	228 + 55	264 + 60	321 + 60	422 + 100	505 + 100
S ₃ + X ₃	248 + 75	294 + 90	371 + 110	472 + 150	585 + 180	210 + 60	224 + 70	248 + 75	294 + 90	371 + 110	472 + 150	585 + 180
T	22	25	32	40	50	15	18	22	25	32	40	50
Spline profile	6x11x14	6x16x20	6x21x25	6x28x34	6x36x42	6x7,5x10,2	6x11x14	6x11x14	6x16x20	6x21x25	6x28x34	6x36x42

These drive shafts are also available with rapid-change coupling.
 * = Customized bores, key-ways and inner square dimensions possible
 Md_{max} = Max. permissible torque (when using material 1.4057 divide the Md_{max}-value in halves)
 β = Max. angle of deflection per joint
 S₁
 S₂ = preferred lengths, compressed
 S₃
 X₁ = Maximum extension for S₁
 X₂ = Maximum extension for S₂
 X₃ = Maximum extension for S₃
 For application criteria and calculations refer to technical annex



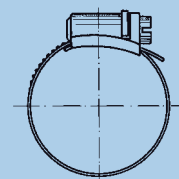
Spline Shafts DIN ISO 14



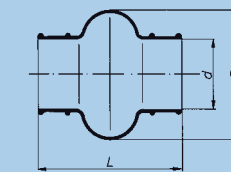
Spline Bore Hubs DIN ISO 14

Material: C40 k, 1.0511 oder C45 k, 1.0503
Material: 35 S 20 k, 1.0726

Material: 11SMnPb 30 k, 1.0718



Material: steel, zinc-plated or stainless steel, corrosion- and acid-resistant



Material: neoprene; temperature-resistant up to 100 °C

Also available with Spigots

Spline Shafts DIN ISO 14

Order number	1.000.524.001	1.000.524.002	1.000.524.003	1.000.524.004	1.000.524.005	1.000.524.007	1.000.524.006
Designation	B 6 x 11 x 14	B 6 x 16 x 20	B 6 x 18 x 22	B 6 x 21 x 25	B 6 x 28 x 32	B 6 x 28 x 34	B 6 x 36 x 42
D mm	14	20	22	25	32	34	42
d mm	11	16	18	21	28	28	36
b mm	3	4	5	5	7	7	8
Available in all lengths up to mm	3000	3000	3000	3000	500*	3000	500*

Material: C40 k, 1.0511 oder C45 k, 1.0503
* = Material: 35 S 20 k, 1.0726

Spline Bore Hubs DIN ISO 14

Order number	1.000.511.001	1.000.511.002	1.000.511.003	1.000.511.004	1.000.511.005	1.000.511.007	1.000.511.006
Designation	A 6 x 11 x 14	A 6 x 16 x 20	A 6 x 18 x 22	A 6 x 21 x 25	A 6 x 28 x 32	A 6 x 28 x 34	A 6 x 36 x 42
D mm	14	20	22	25	32	34	42
d mm	11	16	18	21	28	28	36
b mm	3	4	5	5	7	7	8
A mm	20	28	36	40	50	50	60
Length* mm	50	60	70	70	80	60	100

* = max. grip length even
Material: 11SMnPb 30 k, 1.0718

Hose Clips, steel, zinc-plated

Order number	1.000.961.011	1.000.961.029	1.000.961.003	1.000.961.006	1.000.961.012	1.000.961.013	1.000.961.014	1.000.961.010
Joint-size	0.716/0.816/ 0.720/0.820	0.824/0.725/ 0.828	0.732/0.832/ 0.836	0.740/0.840/ 0.845	0.750/0.850/ 0.855	0.860/0.865	0.870	0.880
Clamping range mm	12 – 20	20 – 32	25 – 40	32 – 50	40 – 60	50 – 70	60 – 80	70 – 90

Hose Clips, stainless steel, corrosion- and acid-resistant

Order number	1.000.961.020	1.000.961.022	1.000.961.023	1.000.961.024	1.000.961.025	1.000.961.026	1.000.961.027	1.000.961.028
Joint-size	0.716/0.816/ 0.720/0.820	0.824/0.725/ 0.828	0.732/0.832/ 0.836	0.740/0.840/ 0.845	0.750/0.850/ 0.855	0.860/0.865	0.870	0.880
Clamping range mm	12 – 20	20 – 32	25 – 40	32 – 50	40 – 60	50 – 70	60 – 80	70 – 90

Bellows

Order number	1.000.830.009	1.000.830.010	1.000.830.013	1.000.830.014	1.000.830.002	1.000.830.003
Joint-size	0.716/0.816	0.720/0.820	0.725/0.824	0.828	0.732/0.832	0.836
L mm	40	47	52	58	67	74
D mm	31	33	46	50	54	65
d mm	16	20	25	28	32	36

1.000.830.004	1.000.830.015	1.000.830.016	1.000.830.006	1.000.830.007	1.000.830.017
0.740/0.840	0.845	0.750/0.850	0.855/0.860	0.865/0.870	0.880
84	97	110	122	132	157
75	82	90	100	110	131
040	45	50	56	65	80