

SERVO DRIVES



The wide range of drive products allows rapid implementation of simple applications with two end positions, up to complex, high-precision multi-axis applications with synchronization to a main electronic shaft.

The servo drives cover a wide range in terms of performance. Controlling small actuators with low power as well as high-power servomotors with direct feed from the three-phase network can be realized.

LinMot Servo Drives

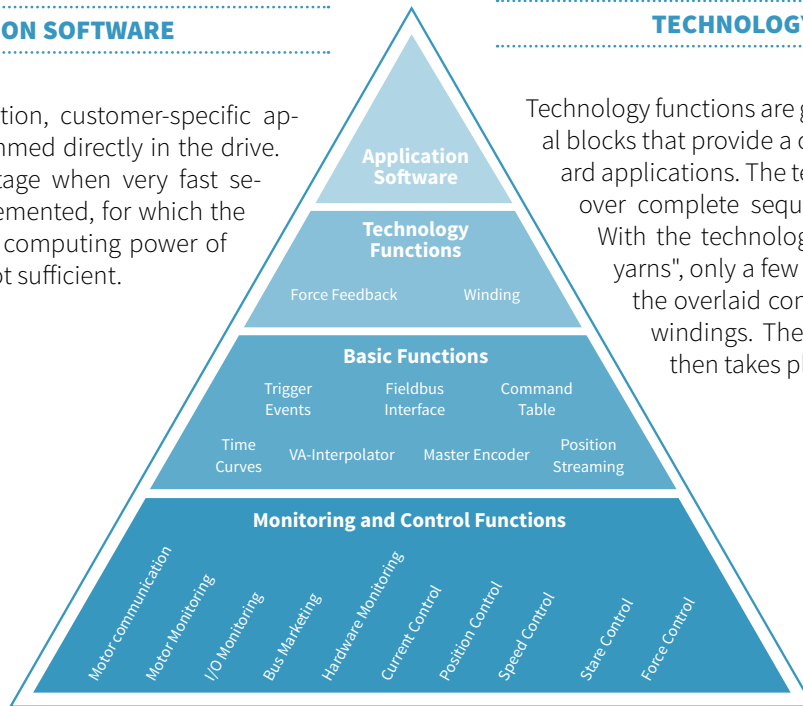
LinMot Servo Drives are highly integrated inverters with one or more power elements, for controlling the motors, and an intelligent control element with integrated position regulation. The control element performs all drive-related control and monitoring functions. It allows direct position set points, or travel along internally stored motion profiles from the overlaid control, using simple analog or digital signals. Additionally, using the technology functions or a customer-specific software application, complete sequences or functions can be implemented for customerspecific applications.

APPLICATION SOFTWARE

Using a software application, customer-specific applications can be programmed directly in the drive. This is mainly an advantage when very fast sequences need to be implemented, for which the communication speed or computing power of the overlaid control are not sufficient.

TECHNOLOGY FUNCTIONS

Technology functions are generally available functional blocks that provide a complete solution for standard applications. The technology function can take over complete sequence control of a process. With the technology function "winding textile yarns", only a few parameters are provided by the overlaid control, such as the number of windings. The complete winding process then takes place automatically.



BASIC FUNCTIONS

The basic functions include communication with the overlaid control, generation of target values for speed and acceleration-limited point-to-point motions, travel along motion profiles, synchronization of drives to an electronic main or master shaft, and synchronization in multi-axis applications.

MONITORING AND CONTROL

The basic functions of the Servo Drive, such as position and current control; control and monitoring of the power element; and monitoring the motor temperature, power, and position are handled by the control, monitoring, and regulation element, which also controls the entire finite state machine of the drive.

SPS LIBRARIES AND PROGRAMMING EXAMPLES

LinMot Drives have all common fieldbus interfaces available for connection to a master controller. In order to realize simple control concept integration, extensive function blocks and programming examples are provided for the customer. These function blocks allow for direct and quick LinMot drive integration. The function blocks run standard functions as well as commands such as drive parameterization and configuration directly from the controller. The complete drive

configuration of the corresponding axis is thus stored on the controller. Maintenance or replacement can be easily realized via automatic drives detection and configuration over the communication bus. Thus manual and time-consuming configuration of the drives in case of failure is eliminated.

Characteristics

POINT-TO-POINT MOTIONS

Because of their high dynamic capabilities, long life, and ability to travel to several positions, LinMot linear motors are often used as a replacement for pneumatic cylinders.

Various end positions can be stored in the drive and are invoked via digital signals, just as with a pneumatic cylinder. Once the end position is reached, this is reported to the overlaid control via the In-position signal on a digital output. Speed and acceleration can be configured freely for each motion.

NC MOTION

Travel along paths from an overlaid NC drive can be implemented via the +/-10V interface, or in streaming mode (PVT, PV).

The predetermined points are calculated rapidly, so that even irregular and complex curves are realized dynamically.

HIGH-END APPLICATIONS

Complex applications with synchronization to a main or master shaft can be implemented without trouble using the integrated master encoder interface. All incoming signals from the main shaft are processed by the LinMot Drive and depend on the movement type of the linear motor.

Together with a high-resolution, external position sensor, even high-precision positioning tasks in μm range can be handled.

MULTI-AXIS OPERATION

In multi-axes or linked operation, the master encoder interface can control both individually and synchronous to a main or master shaft.

For complex designs, several axes can be synchronized in master-booster or master-gantry mode. This allows simple implementation of portal designs with two synchronized axes, which are controlled by the overlaid control as a single axis.

LINEAR AND ROTARY DRIVES

Using LinMot Servo Drives, rotary servomotors can be used as well as linear motors, or any 1/2/3-phase actuators.

Primarily in assembly automation and feeding applications, small, light brushless DC motors (EC motors) are often needed to rotate a gripper about the Z-axis. The flexibility of the Servo Drive allows such rotary motors to be integrated into the existing controls concept in the same simple manner as linear motors.

STANDARDIZED DEVICE PROFILES

To simplify the integration of different axes, the C Series Servo Drives are equipped with PROFIdrive, Sercos III, SoE (SercosOver-Ethercat) and CoE (CiA402). By using device profiles, the integration of „foreign“ Drives in the motion control is simplified. Further positive aspects are the automatic data exchange in real time and the increase of determinism in the system.

PLUG AND PLAY

LinMot motors with the plug and play functionality are automatically recognized by the A1100 / C1200 / C1100 / E1200 / E1400 servo drives and are immediately ready for use.

The servo drive reads these values when it boots up, and sets the parameters accordingly. This automatic device detection eliminates the selection of the required model parameters from an extensive library. Without having the configuration software to boot, first commands can be sent directly by the PLC control.

INTEGRATED SAFETY FUNCTION

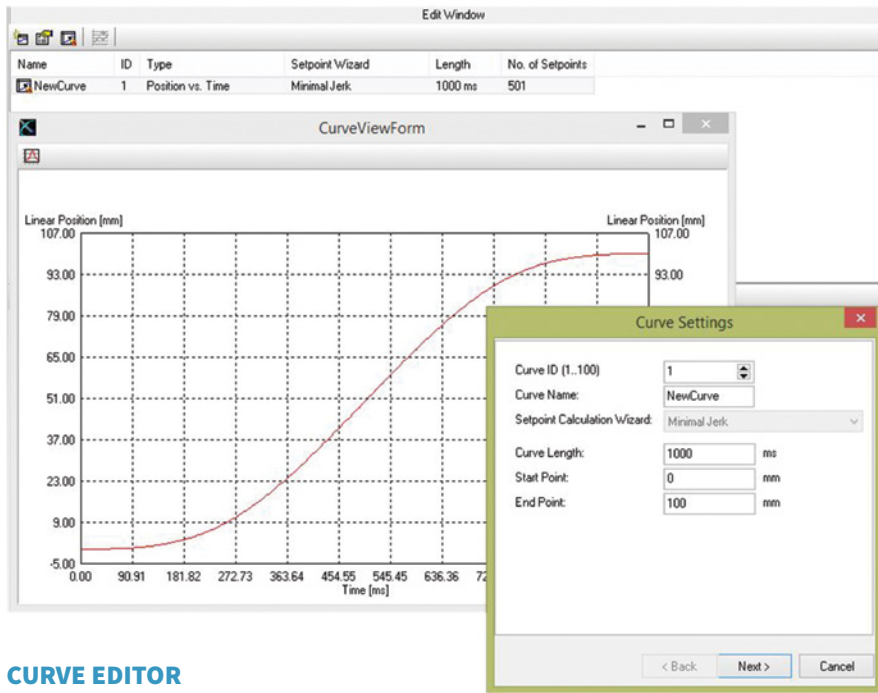
In order to prevent unintended startup, the model C1200 / C1100 / E1200 / E1400 drives have an STO function to safely shut off the output stage. The drive cannot produce any more force when shut off using the "Safe Torque Off" function. A functional safety is currently under preparation and can already be solved today with external components.

CERTIFICATION

The current LinMot Drives are marked with CE and approved as components according to the UL regulation for variable-frequency controllers. Thus they meet the requirements for the US and Canadian market.

Configuration with LinMot Talk

LinMot Talk configuration software is a Windows- based interface that supports the user during start-up and configuration of the LinMot Servo Drives. The software has a powerful, modular, graphical interface that covers all the tasks surrounding the LinMot Servo Drive. Using LinMot Talk PC interface, the engineer can configure LinMot servo drives. The motors are also monitored during operation and the current motion sequences are analysed (monitoring). The integrated control panel gives the user direct access to the control and status words, as well as all commands that are invoked by the upper-level controller.



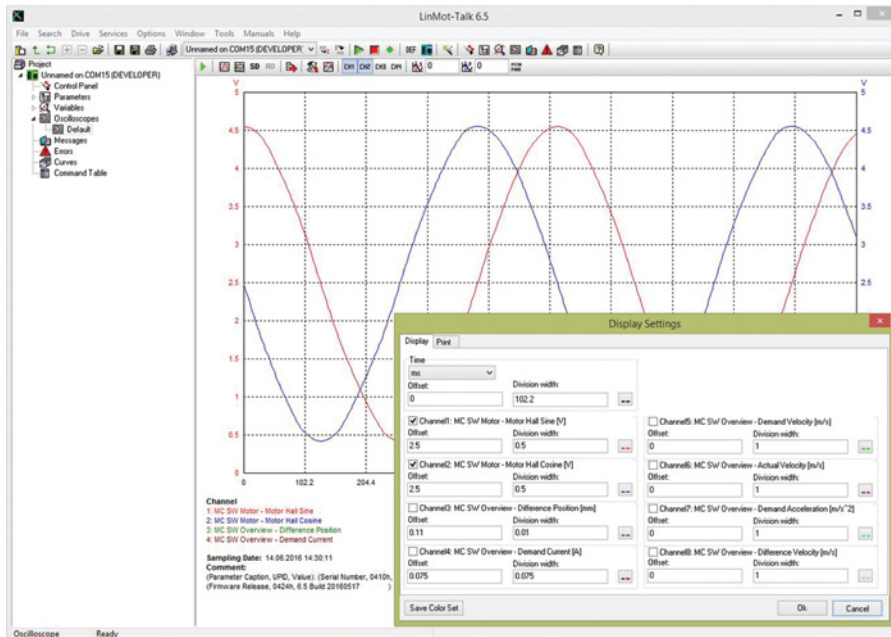
CURVE EDITOR

PARAMETERIZATION

Using the "Parameter Inspector," the drives are parameterized in a simple manner. The user has a wide range of adjustments available for operating modes, error management, warning messages, and regulating parameters. Entire parameter sets can be stored, loaded, and printed out.

CURVE EDITOR

The "Curve Editor" allows creation of travel curves. In addition, existing curves can be loaded, stored, edited, combined, and printed out. Further, complex motion sequences can be generated as desired in MS Excel, and loaded into the drive.



OSCILLOSCOPE

OPTIMIZATION

The integrated oscilloscope helps the user during start-up and optimization of the Parameterization Optimization Monitoring drive system. Internal variables, such as the target and actual position, can be shown in real time on the screen, and then printed out. The displayed data can be stored in CSV format for further processing in MS Excel, or stored for documentation purposes.

MONITORING

Using the "Error Inspector," the user can read out stored errors, as well as the currently active warnings and error messages in the LinMot Servo Drive. A list of the last error messages are stored in non-volatile memory on the Servo Drive, together with the operating hours counter.

Overview Servo Drives



A1100

Space-saving servo drive for instrument engineering



C1100

Compact drive for an ideal use in point-to-point applications.



C1200

Servo Drive for demanding tasks with axis, NC synchronization and an industrial ETHERNET interface.



E1200

High-End Servo Drive with configuration via ETHERNET.



C1400

Servo Drive with direct power supply for simple motions as well as complex axis synchronization. Designed to control the P10 motor family.



E1400

Servo Drive for P10 motors with direct main supply and 3x400 VAC technology. Equipped with an ETHERNET Config. interface.

Technical Specifications

	A1100	C1100	C1200
Motor Supply			
	24...72VDC	24...72VDC	24...72VDC
Motor Current			
	8A _{pk}	25A _{pk}	25A _{pk}
Control of			
LinMot Motors P0x/ PR01	•	•	•
LinMot Motors P10			
Rotary Motors		•	•
EC02 Motors		•	•
AC Servo Motors			
3rd Party Motors		•	•
Functionality			
	Point-to-Point	Point-to-Point	Point-to-Point
	Command Table	Closed Loop Force Control	Limited jerk motion commands
	Motion Profiles	Command Table	NC Motion
		Motion Profiles	Closed Loop Force Control
			Command Table
			Motion Profiles
Ethernet & Fieldbuses			
	CANOpen	PROFINET	PROFINET
		EtherCAT (LinMot Profile)	PROFINET Profidrive
		EtherCAT (CiA402)	EtherNet/IP
		EtherCAT (SoE)	Sercos III
		CANOpen	Powerlink
			LinUDP
			EtherCAT
			EtherCAT (CiA402)
			EtherCAT (SoE)
Interfaces			
Analog Inputs 0..10V / +-10V	1 / 0	1/1	1/1
Number of digital Inputs / Outputs	6 / 2	4/2	4/2
Brake Output	(-)	24V/0.5A	24V/0.5A
External Encoder			
		A/B/Z (RS422)	A/B/Z (RS422)
		SSI	SSI
		BISS	BISS
			EnDat
Timings			
Min. Bus Cycle Time	250 µs	250 µs	125 µs
PWM Frequency	16 kHz	16 kHz	16 kHz
Trigger Commands	≥ 250 µs	≥ 250 µs	≥ 125 µs
Position Drive	250 µs	250 µs	125 µs
Configuration			
RS 232	•	•	•
ETHERNET			•
ETHERNET –Maintenance			

E1200	C1400	E1400
24...72VDC	1x200...240VAC	3x400...480VAC
32A _{pk}	15A _{pk}	28A _{pk}
•	•	•
•	•	•
•	•	•
•	•	•
Point-to-Point	Point-to-Point	Point-to-Point
NC Motion	Limited jerk motion commands	Limited jerk motion commands
Master Encoder / CAM	NC Motion	NC Motion
Belt Synchronization	Master Encoder / CAM	Master Encoder / CAM
Master Booster (up to 4 slaves)	Belt Synchronization	Belt Synchronization
Master Gantry (up to 4 slaves)	Closed Loop Force Control	Master Booster (up to 4 slaves)
Winding Application	Command Table	Master Gantry (up to 4 slaves)
Closed Loop Force Control	Motion Profiles	Winding Application
Command Table		Closed Loop Force Control
Motion Profiles		Command Table
		Motion Profiles
PROFINET	PROFINET	PROFINET
PROFINET Profidrive	PROFINET Profidrive	PROFINET Profidrive
EtherNet/IP	EtherNet/IP	EtherNet/IP
Sercos III	Sercos III	Sercos III
Powerlink	Powerlink	Powerlink
LinUDP	LinUDP	LinUDP
Profibus DP	CANOpen	Profibus DP
CANOpen	EtherCAT	CANOpen
EtherCAT	EtherCAT (CiA402)	EtherCAT
EtherCAT (CiA402)	EtherCAT (SoE)	EtherCAT (CiA402)
EtherCAT (SoE)		EtherCAT (SoE)
LinRS		LinRS
2/1	1/1	2/1
8	4/2	8
24V/1.0A	24V/1.5A	24V/1.5A
A/B/Z (RS422)	A/B/Z (RS422)	A/B/Z (RS422)
Sin/Cos (1Vpp)	SSI	SSI
SSI (only position recovery)	BISS	BISS
	EnDat	EnDat
200 µs	250 µs	250 µs
20 kHz	8 kHz	8 kHz
≥ 100 µs	≥ 125 µs	≥ 125 µs
100 µs	125 µs	125 µs
•	•	•
•	•	•
•	•	•



LinMot®

LinMot®

LinMot®

S2 1 2 3 4 5 6 7 8
S1 1 2 3 4 5 6 7 8
ID LOW ID HIGH
CTS 206-8 T340

S2 1 2 3 4 5 6 7 8
S1 1 2 3 4 5 6 7 8
ID LOW ID HIGH
CTS 206-8 T340

S2 1 2 3 4 5 6 7 8
S1 1 2 3 4 5 6 7 8
ID LOW ID HIGH
CTS 206-8 T340

X33 STO
RELAYS

X33 STO
RELAYS

X33 STO
RELAYS

WARN ERROR
EN 24V OK

WARN ERROR
EN 24V OK

WARN ERROR
EN 24V OK

X4 LOGIC SUPPLY / CONTROL
11 AnIn-
10 AnIn+
9 AnIn
8 In
7 In
6 In
5 In
4 Out
3 Out
24VDC
DGND

X4 LOGIC SUPPLY / CONTROL
11 AnIn-
10 AnIn+
9 AnIn
8 In
7 In
6 In
5 In
4 Out
3 Out
24VDC
DGND

X4 LOGIC SUPPLY / CONTROL
11 AnIn-
10 AnIn+
9 AnIn
8 In
7 In
6 In
5 In
4 Out
3 Out
24VDC
DGND

X19 SYSTEM
8

X19 SYSTEM
8

X19 SYSTEM
8

C1100

C1100