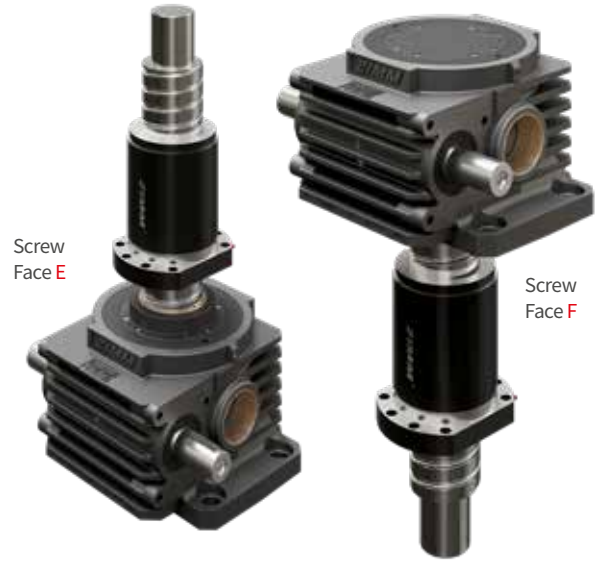
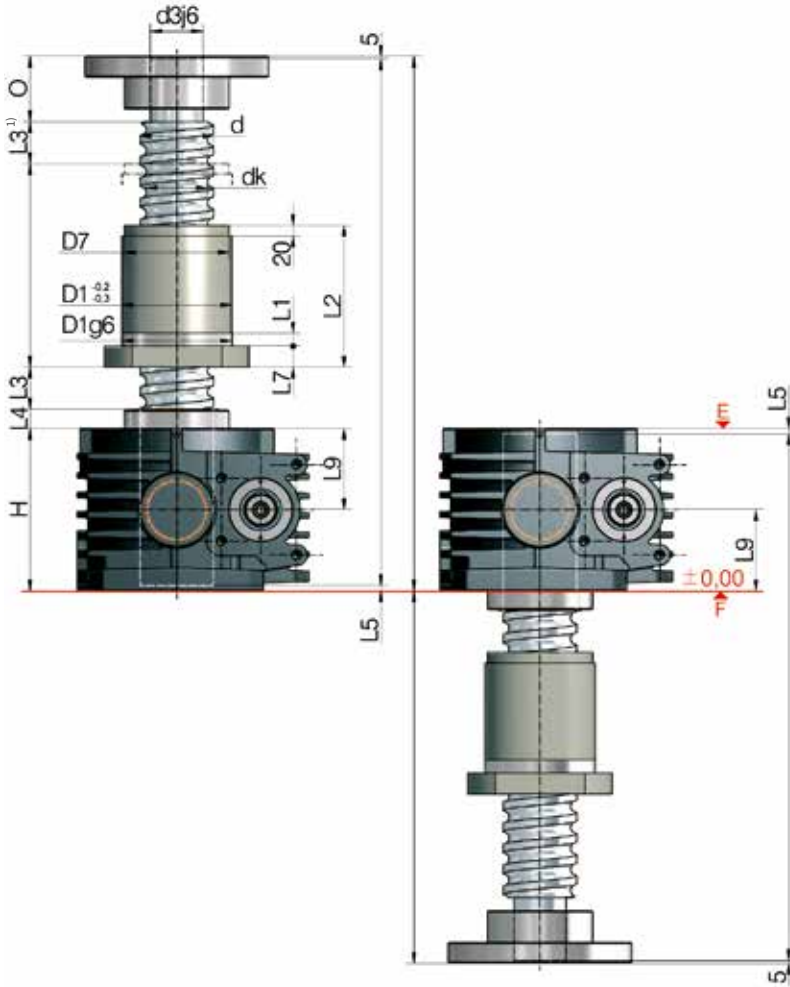
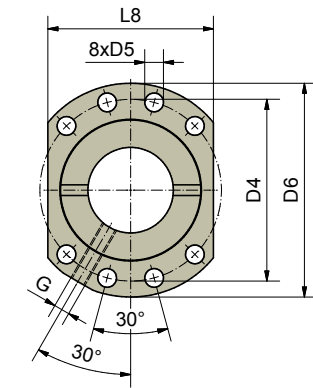


KGT  **R** 500 to 1000 kN
KGT-R | rotating screw



Position of the flanged nut:
G = flange gearbox side (as shown)
S = flange screw side



Hole pattern 2 to DIN 69051

Screw jacks	KGT Screw ØxP	Stroke per drive revolution		KGT Load rating kN		Nut Type	Nut Hole pattern	Lubrication hole G	Axial play max ⁹⁾ mm
		RN	RL	dyn. C ²⁾	stat. Co=C _{0a}				
Z-500	125x25	2,34	0,78	575,1	1863	E	2	M8x1	0,03
	125x40	3,75	1,25	402,2	1117	E	2	M8x1	0,03
	125x60	5,62	1,88	302,8	745,3	E	2	M8x1	0,03
	125x80	7,50	2,50	218,7	630,5	E	2	M8x1	0,03
Z-750	140x25	1,88	0,63	774,3	3082	E	2	M8x1	0,03
	140x40	3,00	1,00	754	2100	E	2	M8x1	0,03
	140x60	4,50	1,50	616,7	1575	E	2	M8x1	0,03
	140x80	6,00	2,00	464,3	1048	E	2	M8x1	0,03
Z-1000	160x25	1,88	0,63	884,7	4068	E	2	M8x1	0,03
	160x40	3,00	1,00	1069,9	3016	E	2	M8x1	0,03
	160x60	4,50	1,50	663	1923	E	2	M8x1	0,03
	160x80	6,00	2,00	499,1	1282	E	2	M8x1	0,03

Technical data

Z-500-R

max. compressive/tensile force, static:	500 kN (50 t)
Input speed:	1000 rpm / max. 1000 rpm
Gearbox operating temperature:	max. 60°C, higher on request
Moment of inertia:	N: 310,2 kg cm ² / L: 127,8 kg cm ²
Input torque (at 1500 rpm):	max. 408 Nm (N) / max. 170 Nm (L)
Drive-through torque:	max. 1940 Nm
Gear ratio:	10,66:1 (Normal) / 32:1 (Low)
Housing material:	GGG-50, corrosion-resistant
Worm shaft:	steel, case-hardened, ground
Weight of screw jack body:	168 kg

Z-1000-R

max. compressive/tensile force, static:	1000 kN (100 t)
Input speed:	1000 rpm / max. 1000 rpm
Gearbox operating temperature:	max. 60°C, higher on request
Moment of inertia:	N: 1058,2 kg cm ² / L: 459,2 kg cm ²
Input torque (at 1500 rpm):	max. 680 Nm (N) / max. 450 Nm (L)
Drive-through torque:	max. 4570 Nm
Gear ratio:	13,33:1 (Normal) / 40:1 (Low)
Housing material:	GGG, corrosion-resistant
Worm shaft:	steel, case-hardened, ground
Weight of screw jack body:	408 kg

Z-750-R

max. compressive/tensile force, static:	750 kN (75 t)
Input speed:	1000 rpm / max. 1000 rpm
Gearbox operating temperature:	max. 60°C, higher on request
Moment of inertia:	N: 518,1 kg cm ² / L: 256,1 kg cm ²
Input torque (at 1500 rpm):	max. 480 Nm (N) / max. 210 Nm (L)
Drive-through torque:	max. 4570 Nm
Gear ratio:	13,33:1 (Normal) / 40:1 (Low)
Housing material:	GGG-50, corrosion-resistant
Worm shaft:	steel, case-hardened, ground
Weight of screw jack body:	262 kg

Ordering example: Z-1000-RN-E-KGT 160x40, C = 1069,9 kN - G



Because of the lack of friction, a holding brake is necessary: a motor brake or a spring pressure brake is required.

Screw: 1.1213 (Cf53), induction hardened and polished.

Screw jacks	KGT Screw	Dimensions mm																	
		ØxP	d	dk	d3j6	O	H	D1	D4	D5	D6	D7	L1	L2	L3 ¹⁾	L4	L5	L7	L8
Z-500	125x25	125	107,8	95	120	260	185	212	17,5	240	170	25	250	50	32	6	30	190	130
	125x40	125	107,8	95	120	260	185	212	17,5	240	170	25	250	80	32	6	30	190	130
	125x60	125	107,8	95	120	260	185	212	17,5	240	170	25	180	120	32	6	30	190	130
	125x80	125	112,4	95	120	260	185	212	17,5	240	170	25	220	160	32	6	30	190	130
Z-750	140x25	140	122,8	100	120	310	210	243	22	275	200	25	310	50	37	10	40	215	115
	140x40	140	117	100	120	310	210	243	22	275	200	25	310	80	37	10	40	215	115
	140x60	140	117	100	120	310	225	260	22	295	200	25	280	120	37	10	40	230	115
	140x80	140	117	100	120	310	225	260	22	295	200	25	260	160	37	10	40	230	115
Z-1000	160x25	160	142,8	130	175	340	225	260	22	295		25	345	50	31	13	40	230	170
	160x40	160	132,8	130	175	340	260	300	22	340	250	40	310	80	31	13	40	265	170
	160x60	160	137	130	175	340	260	300	22	340	250	40	295	120	31	13	40	265	170
	160x80	160	137	130	175	340	260	300	22	340	250	40	275	160	31	13	40	265	170

1) Depending on the control system and drive, the dimension L3 can be reduced at your own discretion. An extension may be required if a bellows or spiral spring is fitted.

2) Dynamic load rating to DIN ISO 3408