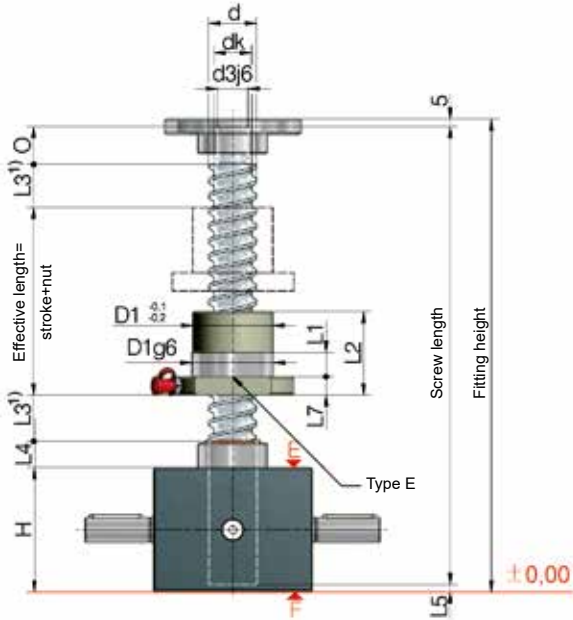
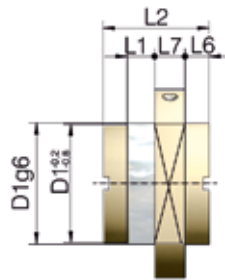


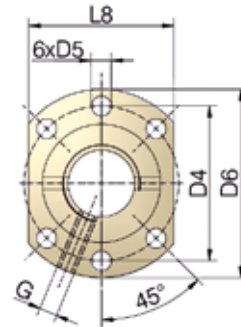
KGT **R** **GSZ 2 to 25 kN**  
**KGT-R** | rotating screw



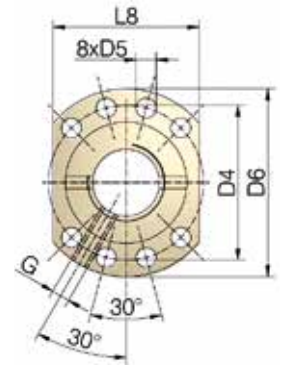
**Position of the flange nut:**  
 G = flange gearbox side (as shown)  
 S = flange screw side



**Type S**



Hole pattern 1  
to DIN 69051



Hole pattern 2  
to DIN 69051

Screw jacks	KGT Screw ØxP	Stroke per drive revolution		KGT Load rating kN		Nut Type	Nut Hole pattern	Lubrication hole G	Axial play max <sup>2)</sup> mm
		RN	RL	dyn. C <sup>2)</sup>	stat. C <sub>0</sub> =C <sub>0a</sub>				
GSZ-2	16x5	1,25	0,31	10,1	12	E	1	M6	0,06
	16x10	2,5	0,63	11,1	12,9	E	1	M6	0,06
GSZ-5	16x5	1,25	0,31	10,1	12	E	1	M6	0,06
	16x10	2,5	0,63	11,1	12,9	E	1	M6	0,06
GSZ-10	25x5	1,25	0,31	13,7	21,5	E	1	M6	0,06
	25x10	2,5	0,63	25,2	45,4	E	1	M6	0,06
	25x25	6,25	1,56	20,7	37,3	E	1	M6	0,06
GSZ-25	25x50	12,5	3,14	19,2	37,3	E	1	M6	0,06
	32x5	0,83	0,21	24,8	49,7	E	1	M6	0,06
	32x10	1,67	0,42	30,8	45,6	E	1	M6	0,06
	32x20	3,33	0,83	32,9	47,1	E	1	M6	0,06
	32x40 <sup>3)</sup>	6,67	1,67	18,3	37,3	S	N <sup>4)</sup>	M6	0,06

# Technical data

## GSZ-2-R

max. compressive/tensile force, static:	2,5 kN (250 kg)
Input speed:	1500 rpm / max. 3000 rpm
Gearbox operating temperature:	max. 60°C, higher on request
Moment of inertia:	N: 0,047 kg cm <sup>2</sup> / L: 0,031 kg cm <sup>2</sup>
Input torque (at 1500 rpm):	max. 1,4 Nm (N) / max. 0,5 Nm (L)
Drive-through torque:	max. 9 Nm
Gear ratio:	4:1 (Normal) / 16:1 (Low)
Housing material:	aluminium, corrosion-resistant
Worm shaft:	steel, case-hardened, ground
Weight of screw jack body:	0,6 kg
Gearbox / Screw lubrication:	synthetic gear oil / grease lubrication

## GSZ-5-R

max. compressive/tensile force, static:	5 kN (500 kg)
Input speed:	1500 rpm / max. 3000 rpm
Gearbox operating temperature:	max. 60°C, higher on request
Moment of inertia:	N: 0,132 kg cm <sup>2</sup> / L: 0,226 kg cm <sup>2</sup>
Input torque (at 1500 rpm):	max. 4,7 Nm (N) / max. 1,5 Nm (L)
Drive-through torque:	max. 39 Nm
Gear ratio:	4:1 (Normal) / 16:1 (Low)
Housing material:	aluminium, corrosion-resistant
Worm shaft:	steel, case-hardened, ground
Weight of screw jack body:	1,2 kg
Gearbox / Screw lubrication:	synthetic gear oil / grease lubrication

## GSZ-10-R

max. compressive/tensile force, static:	10 kN (1 t)
Input speed:	1500 rpm / max. 3000 rpm
Gearbox operating temperature:	max. 60°C, higher on request
Moment of inertia:	N: 0,361 kg cm <sup>2</sup> / L: 0,226 kg cm <sup>2</sup>
Input torque (at 1500 rpm):	max. 13,5 Nm (N) / max. 7,5 Nm (L)
Drive-through torque:	max. 57 Nm
Gear ratio:	4:1 (Normal) / 16:1 (Low)
Housing material:	aluminium, corrosion-resistant
Worm shaft:	steel, case-hardened, ground
Weight of screw jack body:	2,1 kg
Gearbox / Screw lubrication:	synthetic gear oil / grease lubrication

## GSZ-25-R

max. compressive/tensile force, static:	25 kN (2,5 t)
Input speed:	1500 rpm / max. 3000 rpm
Gearbox operating temperature:	max. 60°C, higher on request
Moment of inertia:	N: 0,667 kg cm <sup>2</sup> / L: 0,443 kg cm <sup>2</sup>
Input torque (at 1500 rpm):	max. 18 Nm (N) / max. 10 Nm (L)
Drive-through torque:	max. 108 Nm
Gear ratio:	6:1 (Normal) / 24:1 (Low)
Housing material:	aluminium, corrosion-resistant
Worm shaft:	steel, case-hardened, ground
Weight of screw jack body:	3,8 kg
Gearbox / Screw lubrication:	synthetic gear oil / grease lubrication

Because of the lack of friction, a holding brake is necessary: a motor brake or a spring pressure brake is required.

**Screw:** 1.1213 (Cf 53), induction hardened and polished.

**Pitch accuracy:** 0,05 mm / 300 mm

### Note

An increased screw can also be used for the rotating version.  
(z.B.: ZE-10-RN with screw 32\*10)

Adapter for KGT:  
Dimension sheet on request



Screw jacks	KGT Screw	Dimensions mm																
		ØxP	d	dk	d3j6	O	H	D1	D4	D5	D6	L1	L2	L3 <sup>1)</sup>	L4	L5	L6	L7
GSZ-2	16x5	15,5	12,9	10	12	50	28	38	5,5	48	10	42	15	11	3		10	40
	16x10	15,4	13	10	12	50	28	38	5,5	48	10	55	25	11	3		10	40
GSZ-5	16x5	15,5	12,9	12	15	62	28	38	5,5	48	10	42	15	12	8		10	40
	16x10	15,4	13	12	15	62	28	38	5,5	48	10	55	25	12	8		10	40
GSZ-10	25x5	24,5	21,9	15	20	74	40	51	6,6	62	10	42	15	16	8		10	48
	25x10	24,5	21,9	15	20	74	40	51	6,6	62	16	55	25	16	8		10	48
	25x25	24,5	21,9	15	20	74	40	51	6,6	62	9	35	60	16	8	8	10	
	25x50	24,5	21,9	15	20	74	40	51	6,6	62	10	58	125	16	8	10	10	48
GSZ-25	32x5	31,5	28,9	20	25	82	50	65	9	80	10	55	15	17	5		12	62
	32x10	31,5	26,8	20	25	82	53 <sup>6)</sup>	65	9	80	16	69	20	17	5		12	62
	32x20	31,5	26,8	20	25	82	53 <sup>6)</sup>	65	9	80	16	80	35	17	5		12	62
	32x40 <sup>3)</sup>	31,5	28,9	20	25	82	53 <sup>6)</sup>	68 <sup>6)</sup>	7 <sup>6)</sup>	80	14	45	70	17	5	7,5	16	<sup>3)</sup>

1) Depending on the control system and drive, the dimension L3 and L4 can be reduced at your own discretion. An extension may be required if a bellows or spiral spring is fitted.

2) Dynamic load rating to DIN ISO 3408

3) Round flange

4) Non-preferred design

5) Reduced play 0,02 mm available on request

6) Not to DIN 69051