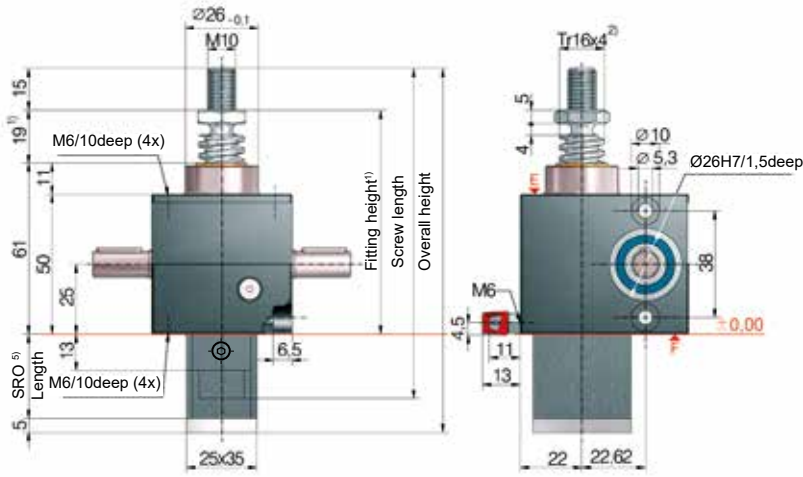
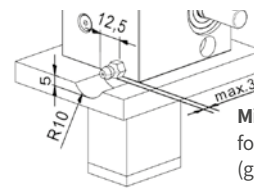


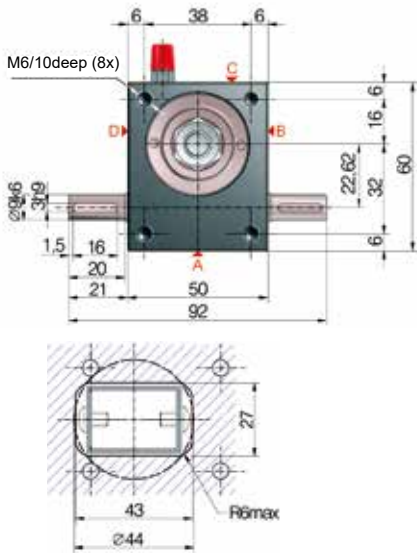
**S 2,5 kN**  
**GSZ-2-S | translating screw**



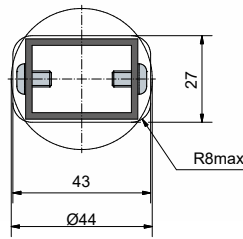
Screw lubrication during operation



Minimum space requirement for greasing the screw (grease gun)



Opening for protective tube SRO:



5) Protective tube length SRO with Tr 16x4-Screw

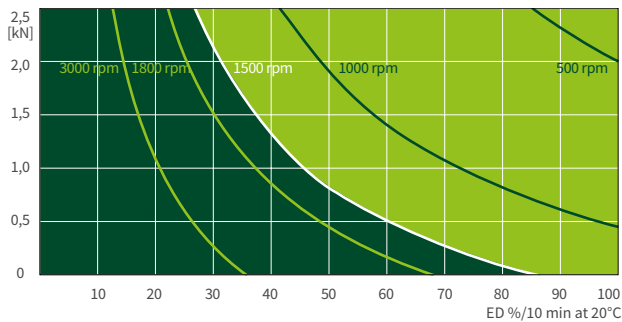
Without escape/rotation protection	47 + stroke
Escape/rotation protection	62 + stroke
Rotation protection, with limit switch set ES	117 + stroke
Rotation protection and ESSET and KAR*	139 + stroke

\*with bellows fixing ring FBR

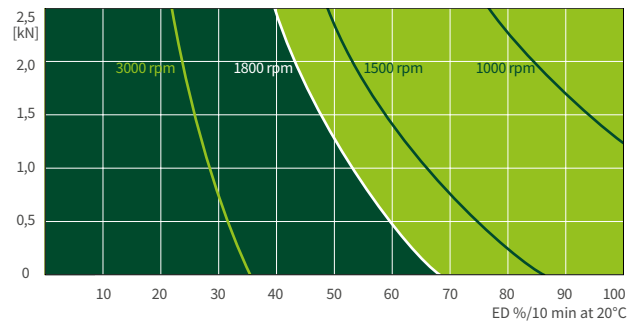
Code	Gearbox (series)	Size	Version (variant)	Ratio	Screw	Stroke per drive shaft rotation
GSZ-2-SN	GSZ	2,5	S (translating screw)	N (normal) 4:1	Tr 16x4	1,00 mm
GSZ-2-SL				L (low) 16:1		0,25 mm

Duty cycle thermal limit (S + R)

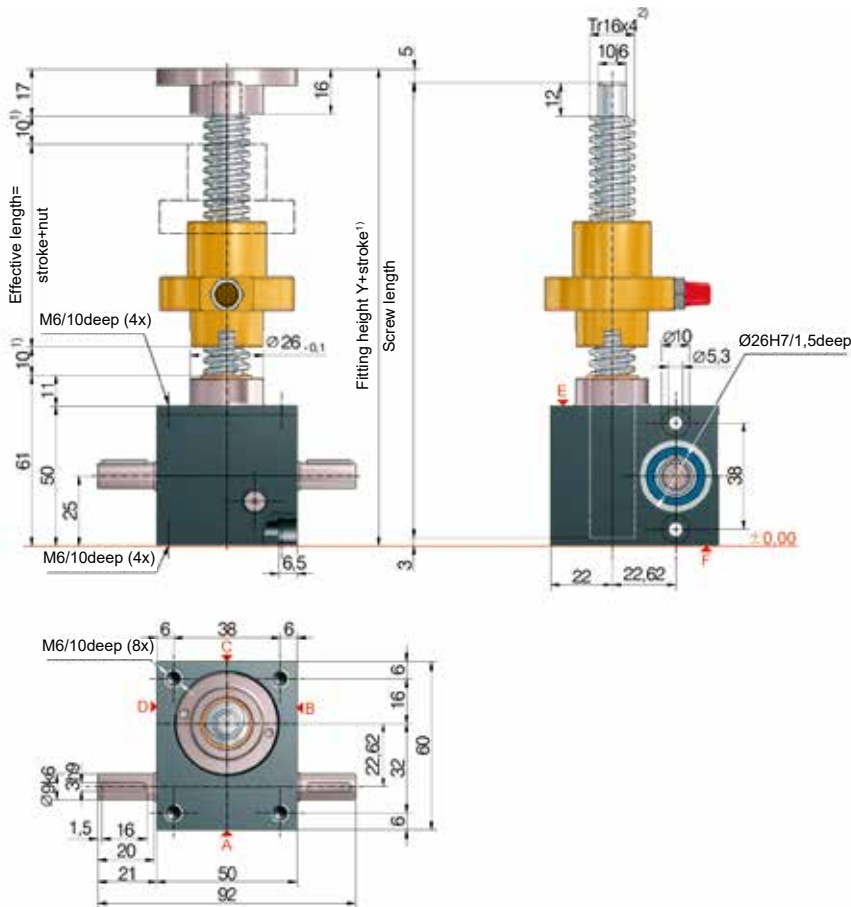
Ratio „N“ (4:1)



Ratio „L“ (16:1)



These curves are for guidance under standard industrial conditions (ambient temperature 20°C etc.) and correct maintenance (lubrication etc.). They are based on the ZIMM standard trapezoidal thread Tr 16x4. With the use of a ball screw, the operation cycles can be many times longer.



Code	Gearbox (series)	Size	Version (variant)	Ratio	Screw	Stroke per drive shaft rotation
GSZ-2-RN	GSZ	2,5	R (rotating screw)	N (normal) 4:1	Tr 16x4	1,00 mm
GSZ-2-RL				L (low) 16:1		0,25 mm

### Technical data series GSZ-2-S / GSZ-2-R

max. compressive/tensile force, static:	2,5 kN (250 kg)
max. compressive/tensile force, dyn:	see duty cycle curves
Input speed:	1500 rpm / max. 3000 rpm (depending on the load and duty cycle)
Screw size standard:	Tr 16x4 <sup>2)</sup>
Gear ratio:	4:1 (N) / 16:1 (L)
Housing material:	aluminium, corrosion-resistant
Worm shaf:	steel, case-hardened, ground
Weight of screw jack body:	0,6 kg
Weight of screw/m:	1,21 kg
Gearbox lubrication:	synthetic fluid grease
Screw lubrication:	grease lubrication
Gearbox operating temperature:	max. 60°C, higher on request
Moment of inertia:	N: 0,047 kg cm <sup>2</sup> / L: 0,031 kg cm <sup>2</sup>
Input torque (at 1500 rpm):	max. 1,4 Nm (N) / max. 0,5 Nm (L)
Drive-through torque:	max. 9 Nm
Drive torque M <sub>G</sub> (Nm):	F (kN) x 0,52 <sup>3,4)</sup> (N-Normal) F (kN) x 0,15 <sup>3,4)</sup> (L-Low)
Breakaway torque:	Drive torque M <sub>G</sub> x 1,5

Make a plan to keep a safe distance of at least 10 mm between gearbox and nut or between nut and threaded end!

Detailed calculation of the fitting dimensions (bellows, screw, protective tube...) can be conveniently determined with our online configurator: [www.zimm.com](http://www.zimm.com)

#### Important information:

- 1) for bellows extension please check e.g. by online configurator.
- 2) Tr 16x4 is standard, also available: double-pitch, INOX, left-handed, increased screw Tr 18x4 (only for the R-Version)
- 3) factor includes efficiency, ratio and 30% safety
- 4) for a 4 mm screw pitch
- 5) to calculate the length of our protective tube length SRO simply use our online configurator: [www.zimm.com](http://www.zimm.com)