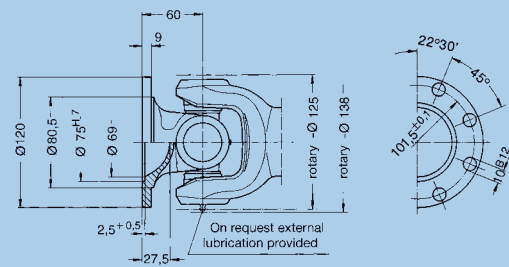
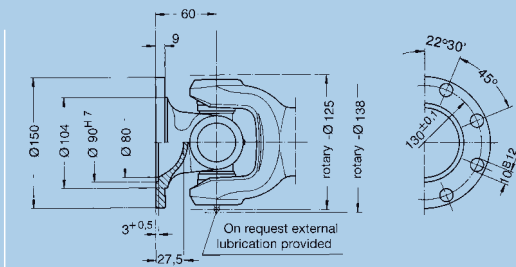


At utilisation of the nominal torque a verification of the flange connection is necessary.

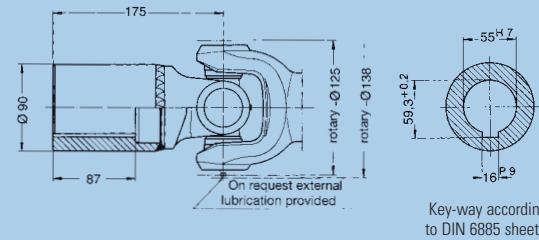


Standard flange
end number: 0.113.XX0

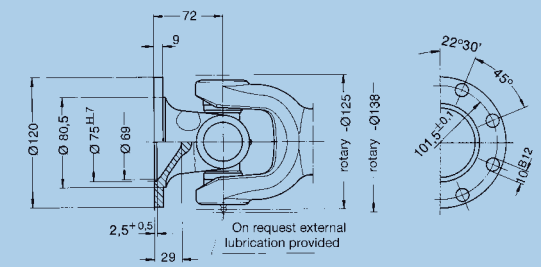


Larger flange
end number: 0.113.XX1

One keyway is not enough to transmit the max. torque. In such case a second keyway or an internal spline is recommended.

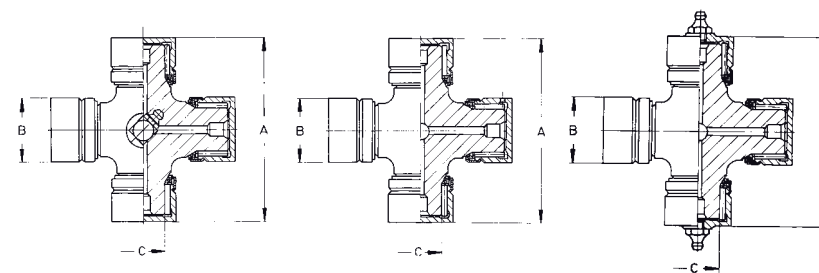


Connecting hub
without key-way end number: 0.113.XX2
with key-way end number: 0.113.XX3



Flange for larger angle of deflection
end number: 0.113.XX5

Cross Units



β* = Maximum angle of deflection per joint
X = Preferred extension (larger extension available up to approx. 9 x spline o. D.)

Fixed joint

Slip joint

Slip joint (sliding sleeve type)

Needle bearing version

	Standard version Needle bearing	Lubrication for version 0.100.3XX Needle bearing	Version suitable for external lubrication Needle bearing
Order number	0.113.010	0.113.011	0.113.012
A	mm 106	106	106
B	mm 38	38	38
C	mm 26,28	26,28	26,28
Snap rings included	mm J 38 x 1,5	J 38 x 1,5	J 38 x 1,5
Weight	kg 1,32	1,32	1,33

Roller bearing version

	Standard version Roller bearing	Version suitable for external lubrication Roller bearing
Order number	0.113.015	0.113.016
A	mm 106	106
B	mm 38	38
C	mm 25,7	25,7
Snap rings included	mm J 38 x 1,5	J 38 x 1,5
Weight	kg 1,25	1,34

Please indicate compressed length „S“, extension and required type of flange when ordering!

Needle resp. Roller bearing version

	without extension				standard extension				larger extension			
Order number	0.113.050	0.113.051	0.113.052	0.113.055	0.113.060	0.113.061	0.113.062	0.113.065	0.113.070	0.113.071	0.113.072	0.113.075
Angle of deflection β*	20	18	20	35	20	18	20	35	20	18	20	35
Weight	4,52	5,20	7,63	4,85	8,85	9,53	11,96	9,40	10,24	10,92	13,35	10,57
Flange-Ø	mm 120	150	Hub	120	120	150	Hub	120	120	150	Hub	120
S	mm 128	128	243	140	318	318	433	343	320	320	435	332
X	mm -	-	-	-	60	60	60	60	130	130	130	130
Y	mm 20	20	20	20	22	22	22	22	22	22	22	22
Z	mm 62,25	62,25	62,25	62,25	62,25	62,25	62,25	62,25	62,25	62,25	62,25	62,25
Spline dim. DIN 5480	mm -	-	-	-	50x2x24	50x2x24	50x2x24	50x2x24	50x2x24	50x2x24	50x2x24	50x2x24
Number of flange holes	8	8	-	8	8	8	-	8	8	8	-	8

* Please refer to point 6.7 of the technical attachment.

The dimensions Z, Y and S will be changed within a product change. Please contact us for further questions.