

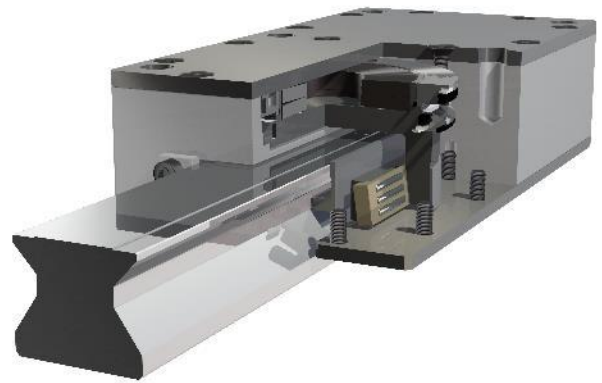
## Safety brake for profiled rail guides

---

ROBA<sup>®</sup>-guidestop pneumatic  
Type 385\_.\_.\_.\_.\_  
Sizes 25 – 65

---

Issue status 2021-08



## Translation of the Original Operational Instructions B.385.EN

---

© Copyright by *mayr*<sup>®</sup> – power transmission

All rights reserved.

Reprints and copies – even extracts – are only permitted with the consent of the manufacturer.

# Operational Instructions for ROBA®-guidestop Type 385 \_ \_ \_ \_ Profiled rail brake Sizes 25 - 65

(B.385.EN)

## Contents

<b>1 General Guidelines .....</b>	<b>3</b>	6.1 Guidelines for Application .....	17
1.1 Definition of Terms .....	3	6.2 Limits .....	17
<b>2 Safety .....</b>	<b>4</b>	6.3 Reasonably Foreseeable Misuse .....	17
2.1 Safety and Guideline Signs .....	4	6.4 Duration of Use .....	17
2.2 General Guidelines .....	4	6.5 Brake Dimensioning .....	18
2.2.1 Personnel Requirements .....	4	6.5.1 Calculation Example (Dynamic Braking) .....	19
2.3 Intended Use .....	5	6.5.2 Switching Times .....	19
2.4 Handling .....	5	<b>7 Storage .....</b>	<b>20</b>
2.5 User-implemented Protective Measures .....	5	7.1 Brake Storage .....	20
2.6 Dimensioning Other Machine Elements .....	5	<b>8 Installation .....</b>	<b>20</b>
<b>3 Legal Provisions .....</b>	<b>6</b>	8.1 Installation Conditions .....	20
3.1 Standards, Directives and Regulations Used .....	6	8.1.1 General .....	20
3.2 Liability .....	6	8.1.2 Profiled rail .....	22
3.3 Guarantee .....	6	8.1.3 Controls .....	23
3.4 Guidelines on CE Identification .....	6	8.2 Installation (Figs. 1 and 2) .....	24
3.5 CE Identification .....	6	8.2.1 Pre-requisites .....	24
3.6 Identification/ Type tag .....	7	8.2.2 Preparation .....	24
3.6.1 Order Number .....	7	8.2.3 Installation Procedure .....	24
<b>4 Product Description .....</b>	<b>8</b>	<b>9 Options .....</b>	<b>25</b>
4.1 Scope of Delivery / State of Delivery .....	8	9.1 Switching Condition Monitoring (NO Contact) .....	25
4.2 Function .....	8	<b>10 Initial Operation .....</b>	<b>26</b>
4.3 Views .....	9	10.1 Brake Inspection (before initial operation) .....	26
4.4 Parts List .....	10	10.2 Brake Test (Static) .....	26
<b>5 Technical Data .....</b>	<b>11</b>	10.2.1 (Static) Brake Inspection .....	26
5.1 Guidelines .....	11	10.3 Brake Inspection (During Operation) .....	26
5.1.1 Application Conditions .....	11	10.3.1 Regular Function Inspection (static) .....	26
5.1.2 Ambient Temperature .....	11	<b>11 Maintenance / Inspection / Switching</b>	
5.1.3 Protection .....	11	<b>Frequency .....</b>	<b>27</b>
5.1.4 Noise Emissions .....	11	11.1 Switching Frequency .....	27
5.1.5 Installation Position .....	11	11.2 Inspection .....	27
5.1.6 Pre-requisites for Product Application .....	11	11.3 Maintenance .....	27
5.2 Technical Data .....	12	11.4 Cleaning .....	28
5.2.1 Type 3850.0 _ _ _ _ Standard .....	12	<b>12 De-installation .....</b>	<b>28</b>
5.2.2 Type 3851.0 _ _ _ _ Short Design .....	13	<b>13 Disposal .....</b>	<b>28</b>
5.2.3 Type 3852.0 _ 1 _ _ High Pressure .....	14	<b>14 Malfunctions / Breakdowns .....</b>	<b>29</b>
5.2.4 Type 3853.0 _ _ _ _ High Pressure, Short Design .....	15	<b>15 Declaration of Conformity .....</b>	<b>30</b>
5.2.5 Dimensions Profiled Rail .....	16		
<b>6 Intended Use .....</b>	<b>17</b>		

**Please read these Operational Instructions carefully and follow them accordingly!**

Ignoring these Instructions may lead to malfunctions or to brake failure, resulting in damage to other parts. These Operational Instructions are part of the brake delivery.  
Please keep them handy and near to the brake at all times.





**1 General Guidelines**

**1.1 Definition of Terms**

Term	Meaning
ROBA®-guidestop	Pneumatically-actuated safety brakes as components for holding and decelerating of moved machine parts.
Nominal holding force F	The theoretical nominal holding force assigned to the designation. The nominal holding force lies within the stated nominal holding force tolerances.
Load mass	Designation of the weight, which must be held by the brake.

## 2 Safety

### 2.1 Safety and Guideline Signs

Symbol	Signal word	Meaning
	<b>DANGER</b>	Designates a directly pending danger. If not avoided, death or severe injuries will be the consequence.
	<b>WARNING</b>	Designates a possibly hazardous situation. If not avoided, death or severe injuries will be the consequence.
	<b>CAUTION</b>	Designates a hazardous situation. If not avoided, slight or minor injuries can be the consequence.
	<b>ATTENTION</b>	Possible property damage can be the consequence.
	<b>Please Observe</b>	Designates tips for application and other particularly useful information. Not a signal word for dangerous or damaging situations.

### 2.2 General Guidelines

Brakes may generate further risks, among other things:



- ☐ Technical data and specifications (Type tags and documentation) must be followed. General Guideline:

#### General Guideline:

During the risk assessment required when designing the machine or system, the dangers involved must be evaluated and removed by taking appropriate protective measures in accordance with the Machinery Directive 2006/42/EC.

**Severe injury to people and damage to objects may result if:**

- ☐ the brake is used incorrectly.
- ☐ the brake is modified.
- ☐ the relevant standards for safety and / or installation conditions are ignored.

Brakes for safety-related applications are to be installed singly or as redundant devices in accordance with the required category, in order to fulfil the required Performance Level (PL) acc. EN ISO 13849. This is in principle the task of the system manufacturer.

#### 2.2.1 Personnel Requirements

**To prevent injury or damage, only professionals and specialists are allowed to work on the components.**

They must be familiar with the dimensioning, transport, installation, initial operation, maintenance and disposal according to the relevant standards and regulations.



Before product installation and initial operation, please read the Installation and Operational Instructions carefully and observe the Safety Regulations. Incorrect operation can cause injury or damage. At the time these Installation and

Operational Instructions go to print, the pneumatic brakes accord with the known technical specifications and are operationally safe at the time of delivery.

## 2.3 Intended Use



Use according to the intended use is prohibited until it has been determined that the machine / system accords with the EC Directive 2006/42/EC (machinery directive).

mayr®-brakes are for use in machines and systems and must only be used in the situations for which they are ordered and confirmed. Using them for any other purpose is not allowed.

ROBA®-guidestop brakes by mayr® are used for holding and deceleration of profiled rails.

ROBA®-guidestop brakes by mayr® prevent inadvertent dropping or crashing of gravity-loaded axes.

- ☐ Not suitable for operation in areas where there is a danger of explosion

## 2.4 Handling

**Before installation**, the brake must be inspected and found to be in proper condition (visual inspection). The following are not considered as being representative of a proper condition:

- ☐ External damage
- ☐ External oiling
- ☐ Outer contamination

The brake function must be inspected both **once attachment has taken place** as well as **after longer system downtimes**.

## 2.5 User-implemented Protective Measures

- ☐ Please cover moving parts to protect **against injury through seizure**.
- ☐ Install additional protective measures **against corrosion** if the brake is subject to extreme ambient conditions or is installed in open air conditions, unprotected from the weather.

## 2.6 Dimensioning Other Machine Elements



The effects of the maximum and minimum braking force on the other machine components must be observed in order to provide sufficient dimensioning. The ROBA®-guidestop has (at room temperature) a maximum braking force of 2.5 x brake nominal holding force and a minimum braking force of 1 x brake nominal holding force.

If other brakes are positioned behind the ROBA®-guidestop, and if the braking times of the different brakes overlap, the loads will add up.

### **3 Legal Provisions**

#### **3.1 Standards, Directives and Regulations Used**

(also to be observed during installation and operation)

EN ISO 4414	General rules and safety requirements for pneumatic systems and their components
EN ISO 12100	Safety of machinery - General principles for design - Risk assessment and risk reduction
EN ISO 13849-1	Safety of machinery – Safety related parts of control systems

#### **3.2 Liability**

The information, guidelines and technical data in these documents were up to date at the time of printing. Demands on previously delivered brakes are not valid. Liability for damage and operational malfunctions will not be taken if:

- ☐ the Installation and Operational Instructions are ignored or neglected,
- ☐ the brakes are used inappropriately.
- ☐ the brakes are modified.
- ☐ the brakes are worked on unprofessionally.
- ☐ the brakes are handled or operated incorrectly.

#### **3.3 Guarantee**

- ☐ The guarantee conditions correspond with the Chr. Mayr GmbH + Co. KG sales and delivery conditions ([www.mayr.com](http://www.mayr.com) → Service → General Terms and Conditions)
- ☐ Mistakes or deficiencies are to be reported to *mayr®* power transmission at once!

#### **3.4 Guidelines on CE Identification**



##### **Guidelines on the Machinery Directive (2006/42/EC)**

The product is a component for installation into machines according to the Machinery Directive 2006/42/EC. The component represents a safety component in accordance with Art 2(c) in terms of the machinery directive. The brakes can fulfil the specifications for safety-related applications in coordination with other elements (control, wiring).

The type and scope of the required measures result from the machine risk assessment. The brake then becomes a machine component and the machine manufacturer assesses the conformity of the safety device to the directive.

A risk assessment and a conformity evaluation have been carried out for the component (pneumatic clamping and braking system) in terms of the Machinery Directive 2006/42/EC.

##### **Guidelines on the ATEX Directive**

Without a conformity evaluation, this product is not suitable for use in areas where there is a high danger of explosion.

For application of this product in areas where there is a high danger of explosion, it must be classified and marked according to Directive 2014/34/EU.

#### **3.5 CE Identification**



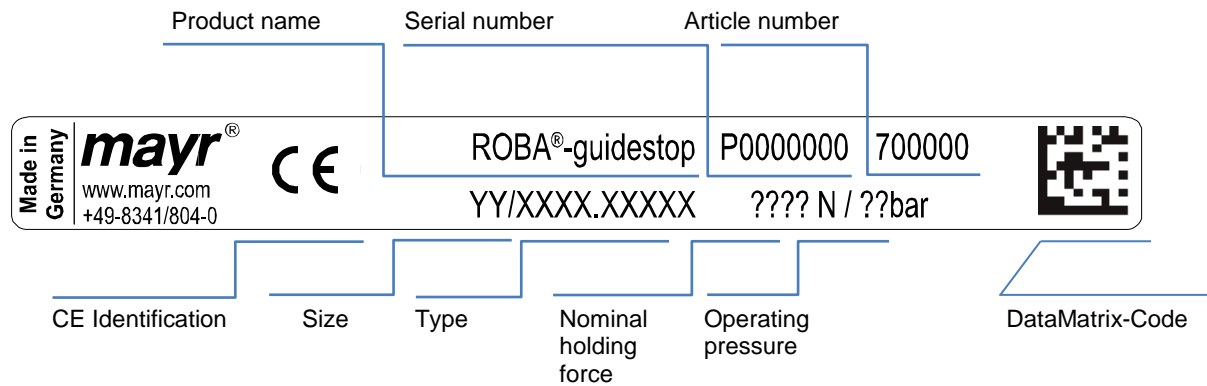
Identification according to the Machinery Directive 2006/42/EC

# Operational Instructions for ROBA®-guidestop Type 385\_.\_ \_ \_ \_ Profiled rail brake Sizes 25 - 65

(B.385.EN)

## 3.6 Identification/ Type tag

mayr® components are clearly marked and described on the Type tag:



Serial number

Year	Code	Year	Code
2000	A	2011	N
2001	B	2012	P
2002	C	2013	R
2003	D	2014	S
2004	E	2015	T
2005	F	2016	U
2006	H	2017	V
2007	J	2018	W
2008	K	2019	X
2009	L	2020	Y
2010	M	2021	Z

### 3.6.1 Order Number

Standard Short design				Rail manufacturer				Rail type see Table			
0/2 1/3				INA A BOSCH B Schneeberger C HIWIN D THK E Rollon F NSK G NTN-SNR H IKO J SKF M				0 1 2			
— / 3 8 5 — . — — — / —											
Size 25 to 65				Clamping unit 0 Brake unit 1				Options 0 Standard (Basic Type) 1 with switching condition monitoring 2 with wiper 3 with switching condition monitoring and wiper			

# Operational Instructions for ROBA®-guidestop Type 385\_.\_ \_ \_ \_ Profiled rail brake Sizes 25 - 65

(B.385.EN)

## 4 Product Description

### 4.1 Scope of Delivery / State of Delivery

- ❑ ROBA®-guidestop brake are manufacturer-assembled and ready for installation.
- ❑ The ROBA®-guidestop is set to the nominal holding force stipulated in the order.
- ❑ Please observe the Type tag.
- ❑ Please check the scope of delivery as well as the state of delivery immediately after receiving the goods. *mayr*® power transmission will take no responsibility for belated complaints. Please report transport damage immediately to the supplier. Please report incomplete delivery and obvious defects immediately to the manufacturer.

#### ATTENTION The brake could be damaged

Removal of the transportation lock (10) in de-pressurized condition of the brake leads to damage. Remove the transportation lock (10) (red screw head) only in pressurized condition.



#### Caution Please observe the own weight of the brake

The brake may drop during lifting / transport. The consequences may be crush injuries and impact injuries.

### 4.2 Function

The spring-loaded, enclosed **ROBA®-guidestop** (Type 385\_0\_ \_ \_ \_), which can be opened pneumatically, clamps a profiled rail steplessly and backlash-free.

The **ROBA®-guidestop** (Type 385\_1\_ \_ \_ \_), which can be opened hydraulically, clamps and brakes a profiled rail steplessly and backlash-free.

Due to the spring-loaded system, the fail-safe principle can be guaranteed, the **ROBA®-guidestop** works as a **safety brake**.



#### Please Observe!

The full clamping force can only be reached when the brake is pressureless (<0,5 bar).

In case the operating pressure is too low, the brake cannot be pressurized (opened) correctly.

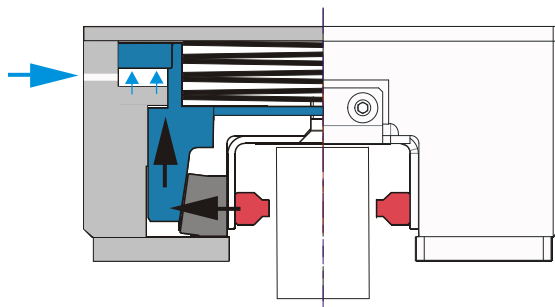
The required operating pressure is stated on the Type tag.

To reliably query this, we recommend the use of pressure switches, see section 8.1.3

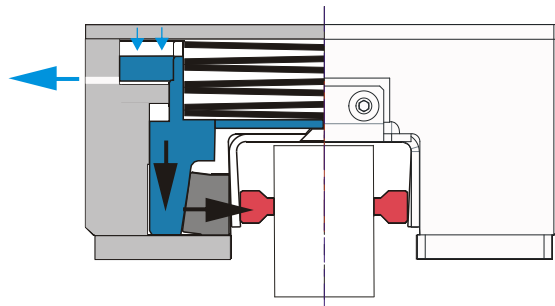
- ❑ Through pressurization of the **ROBA®-guidestop** with the required operating pressure, the clamping element of the brake is pressed against the cup spring. The profiled rail can be moved (Illustration 1).
- ❑ By pressure release the **ROBA®-guidestop**, the cup spring has an effect on the clamping element of the brake. The profiled rail is clamped (Illustration 2).

**The max. permitted sliding speed is 2 m/s.**

Higher speeds on request!



**Illustration 1** Moveable profiled rail on pressurization



**Illustration 2** Clamped profiled rail on pressure release

# Operational Instructions for ROBA®-guidestop Type 385\_.\_.\_.\_ Profiled rail brake Sizes 25 - 65

(B.385.EN)

## 4.3 Views

Type 3850\_.\_.\_.\_, 3852\_.\_.\_.\_ standard

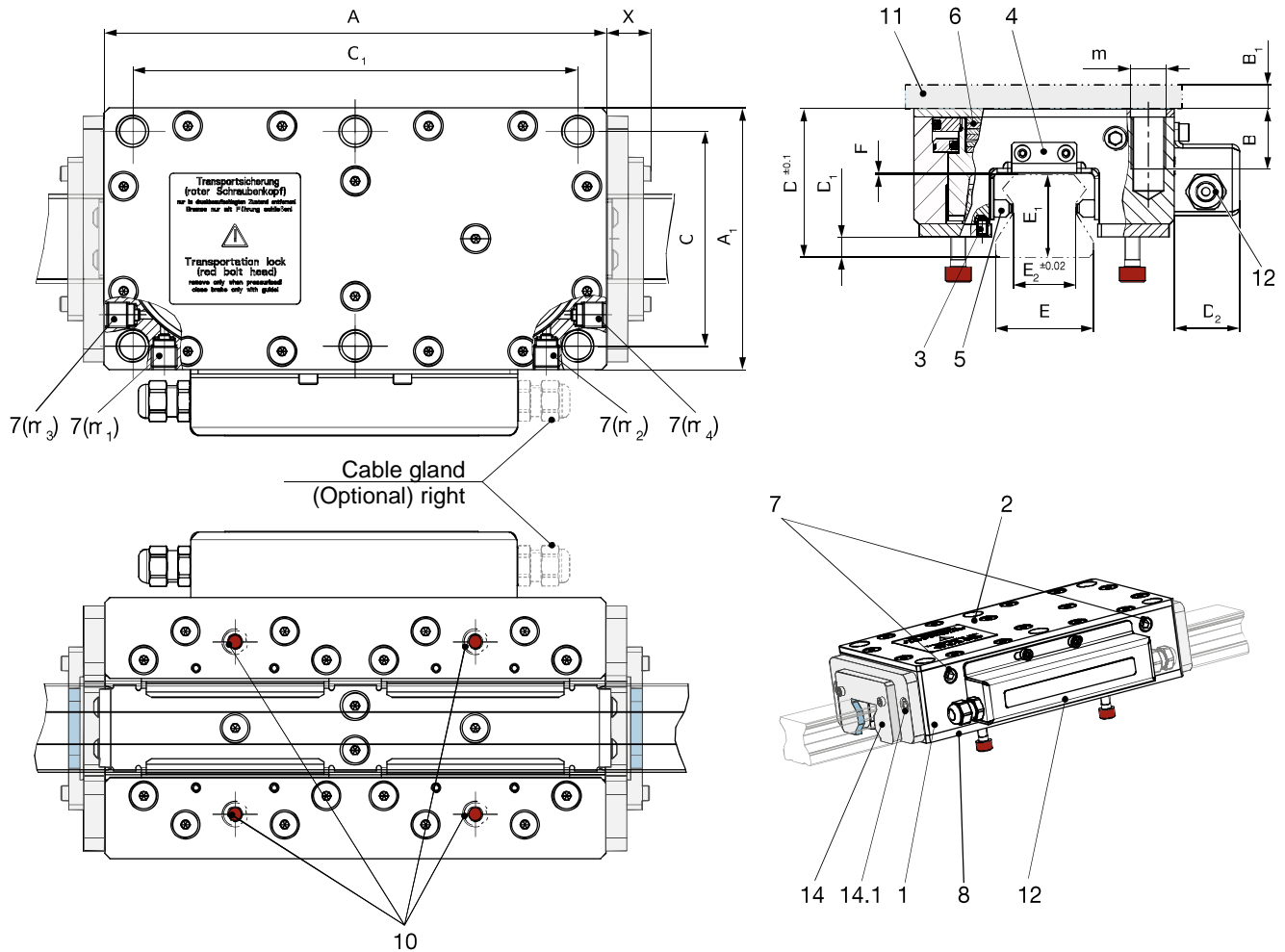


Fig. 1

# Operational Instructions for ROBA®-guidestop Type 385..... Profiled rail brake Sizes 25 - 65

(B.385.EN)

Type 3851....., 3853..... short design

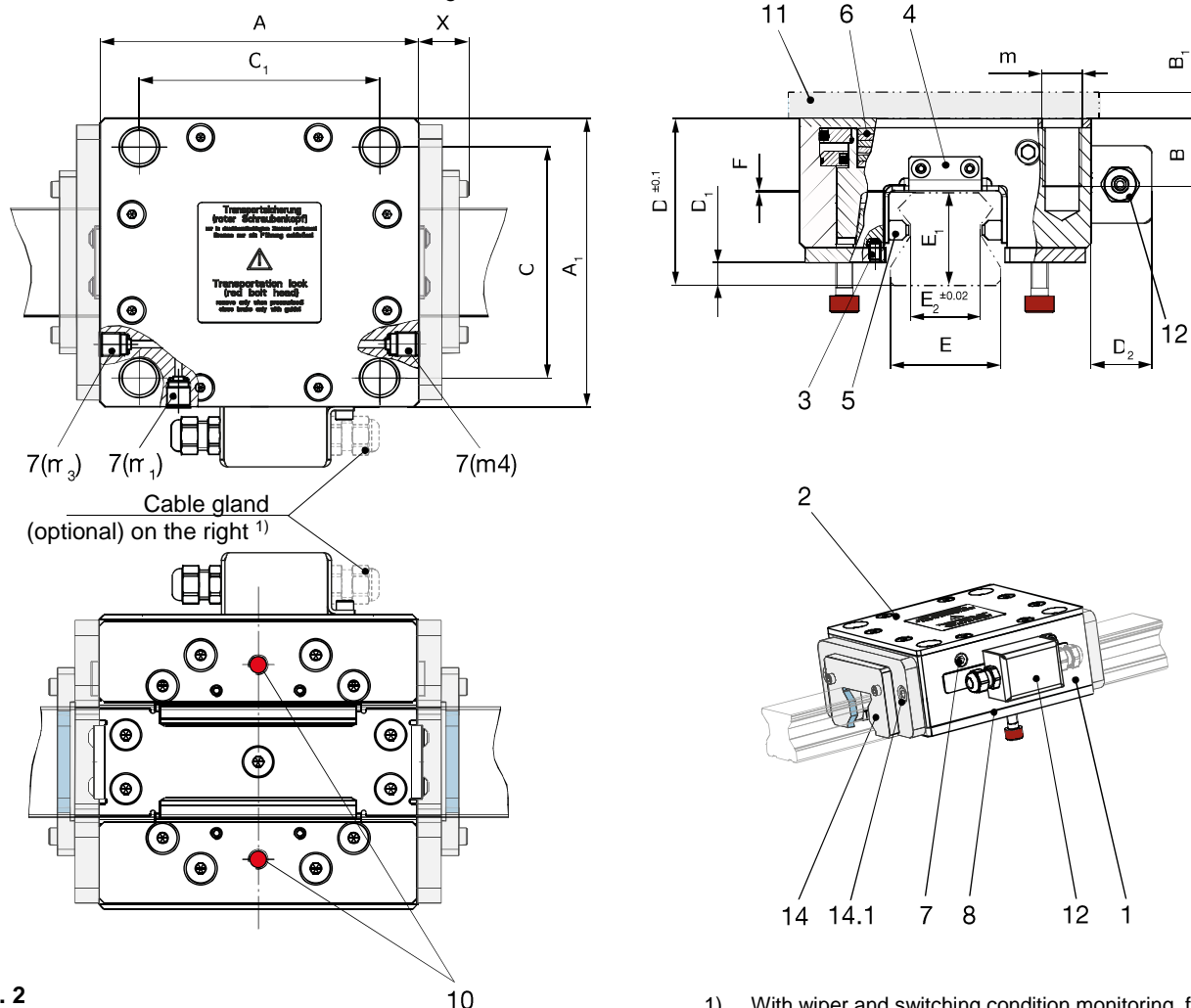


Fig. 2

- 1) With wiper and switching condition monitoring, for Sizes 25, 45 and 55 the cable gland is only possible on the right.

## 4.4 Parts List

(Only use mayr® original parts)

Item	Name
1	Cylinder housing
2	Cylinder cover
3	Ball point screw
4	Carrier plate
5	Brake shoe
6	Cup springs
7	Pneumatic connection
8	Sealing cover
9	Screw plug pneumatic connection (7) (not depicted)
10	Transportation lock
11	Mounting flange customer-side
12	Switching condition monitoring (option dependent on Type)

Item	Name
12.1	Proximity switch
12.2	Hexagon nut
12.3	Cover plate
12.4	Cap screws
12.5	Cable gland
13	Type tag (not depicted)
14	Wiper (optional)
14.1	Fixing screws wiper

## 5 Technical Data

### 5.1 Guidelines

#### 5.1.1 Application Conditions



The stated values are guideline values which have been determined in test facilities. It may be necessary to carry out your own tests for the intended application. When dimensioning the brakes, please remember that installation situations, permitted friction work and braking distances as well as general ambient conditions can all affect the given values.

- ☐ Mounting dimensions and connection dimensions must be adjusted according to the size of the brake at the place of installation.
- ☐ Use of the brake in extreme environmental conditions or outdoors, directly exposed to the weather, is not permitted.
- ☐ The surfaces of the outer components have been phosphated manufacturer-side to form a basic corrosion protection.
- ☐ The provision of the required operating pressure must be guaranteed.

#### 5.1.2 Ambient Temperature

–10 °C up to +60 °C

The Technical Data refers to the stated temperature range.

#### 5.1.3 Protection

**(mechanical) IP44:** In installed condition, protected against solid foreign bodies >1 mm in diameter as well as protected against water spray from all directions.

#### 5.1.4 Noise Emissions

Normally no noise development

#### 5.1.5 Installation Position

The ROBA®-guidestop can be operated in any installation position.

#### 5.1.6 Pre-requisites for Product Application

Compare the limit values stated in these operational instructions with the actual application, e.g.

- ☐ Pressure
- ☐ Clamping forces / Brake forces
- ☐ Braking distance
- ☐ Masses
- ☐ Temperatures etc.
- ☐ Pressure medium

# Operational Instructions for ROBA®-guidestop Type 385\_.\_ \_ \_ \_ \_ Profiled rail brake Sizes 25 - 65

(B.385.EN)

## 5.2 Technical Data

### 5.2.1 Type 3850.0 \_ \_ \_ \_ Standard

Technical Data			Size				
			25	35	45	55	65
Nominal holding force F	Type 3850.0_0_ _	[N]	1400	2800	4000	6000	8000
	Type 3850.0_1_ _	[N]	1700	3500	5000	7000	10000
	Type 3850.0_2_ _	[N]	2200	4400	6000	9000	12000
	Tolerance	Type 3850.0_ _ _ _	0% / +150%				
		Type 3850.1_ _ _ _	-20% / +40%				
Weight		[kg]	2.4	5.4	9	14.5	26.7
Operating pressure	min.	[bar]	See Type tag (4.0 – 6.0)				
	max.	[bar]	8				
Rigidity		[N/μm]	200	380	490	860	1000
Maximum sliding speed		[m/s]	2				
Pneumatic connection (7)	Tightening torque	[Nm]	12				
	Thread		M5	1/8"			
Air consumption per switching procedure in standard litres at min. operating pressure	Type 3850.0_0_ _	[NL]	0.063	0.120	0.179	0.241	0.34
	Type 3850.0_1_ _	[NL]	0.079	0.150	0.224	0.301	0.42
	Type 3850.0_2_ _	[NL]	0.095	0.180	0.269	0.361	0.5
Ambient Temperature		[°C]	-10 to +60				
Proximity switch Hexagon nut Item 12.2	Tightening torque	[Nm]	2				
	Thread		M5				
Pressure medium			Compressed air with compressed air quality acc. ISO 8573-1 Class 4				

Dimension s [mm]	Size				
	25	35	45	55	65
A	145	192	225	270	325
A1	70	100	120	140	170
B	14.7	21.7	27.7	35.7	43
B1	10	10	15	25	35
C	58	82	96	110	134
C1	132	170	196	240	288
D2	25	25	25	25	25
E	23	34	45	53	63
m	6 x M8	6 x M12	6 x M16	6 x M20	6 x M24
X	Dimension depends on the rail manufacturer				

Dimensions profiled rail see 5.2.5

# Operational Instructions for ROBA®-guidestop Type 385 \_ \_ \_ \_ \_ Profiled rail brake Sizes 25 - 65

(B.385.EN)

## 5.2.2 Type 3851.0 \_ \_ \_ \_ Short Design

Technical Data			Size				
			25	35	45	55	65
Nominal holding force F	Type 3851.0_0_ _	[N]	700	1400	2000	3000	4000
	Type 3851.0_1_ _	[N]	850	1750	2500	3500	5000
	Type 3851.0_2_ _	[N]	1100	2200	3000	4500	6000
	Tolerance	Type 3851.0_ _ _ _	0% / +150%				
		Type 3851.1_ _ _ _	-20% / +40%				
Weight		[kg]	1.5	3.3	5.1	8.4	15.6
Operating pressure	min.	[bar]	See Type tag (4.0 – 6.0)				
	max.	[bar]	8				
Rigidity		[N/μm]	200	380	490	860	1000
Maximum sliding speed		[m/s]	2				
Pneumatic connection (7)	Tightening torque	[Nm]	12				
	Thread		M5	1/8"			
Air consumption per switching procedure in standard litres at min. operating pressure	Type 3851.0_0_ _	[NL]	0.032	0.060	0.090	0.120	0.17
	Type 3851.0_1_ _	[NL]	0.039	0.075	0.112	0.151	0.21
	Type 3851.0_2_ _	[NL]	0.047	0.090	0.135	0.181	0.25
Ambient Temperature		[°C]	-10 to +60				
Proximity switch Hexagon nut Item 12.2	Tightening torque	[Nm]	2				
	Thread		M5				
Pressure medium			Compressed air with compressed air quality acc. ISO 8573-1 Class 4				

Dimensions [mm]	Size				
	25	35	45	55	65
A	88	115	130	155	190
A1	70	100	120	140	170
B	14.7	21.7	27.7	35.7	43
B1 <sup>1)</sup>	10	10	15	25	35
C	58	82	96	110	134
C1	75	92	98	125	152
D2	25	25	25	25	25
E	23	34	45	53	63
m	4 x M8	4 x M12	4 x M16	4 x M20	4 x M24
X	Dimension depends on the rail manufacturer				

1) Required minimum thickness of the customer-side mounting flange (steel)

Dimensions profiled rail see **5.2.5**

# Operational Instructions for ROBA®-guidestop Type 385\_ \_ \_ \_ \_ Profiled rail brake Sizes 25 - 65

(B.385.EN)

## 5.2.3 Type 3852.0 \_ 1 \_ \_ High Pressure

Technical Data			Size				
			25	35	45	55	65
Nominal holding force F		Type 3852.0_1_ _ [N]	5500	10000	15000	20000	30000
	Tolerance	Type 3852.0_ _ _ _	0% / +150%				
		Type 3852.1_ _ _ _	-20% / +40%				
Weight		[kg]	2.4	5.4	9	14.5	26.7
Operating pressure		min. [bar]	20				
		max. [bar]	28				
Rigidity		[N/μm]	200	380	490	860	1000
Maximum sliding speed		[m/s]	2				
Pneumatic connection (7)		Tightening torque [Nm]	12				
		Thread	M5	1/8"			
Air consumption per switching procedure in standard litres at min. operating pressure		Type 3852.0_1_ _ [NL]	0.315	0.600	0.897	1.205	1.3
Ambient Temperature		[°C]	-10 to +60				
Proximity switch Hexagon nut Item 12.2		Tightening torque [Nm]	2				
		Thread	M5				
Pressure medium			Compressed air with compressed air quality acc. ISO 8573-1 Class 4				

Dimensions [mm]	Size				
	25	35	45	55	65
A	145	192	225	270	325
A1	70	100	120	140	170
B	14.7	21.7	27.7	35.7	43
B1 <sup>1)</sup>	10	10	15	25	35
C	58	82	96	110	134
C1	132	170	196	240	288
D2	25	25	25	25	25
E	23	34	45	53	63
m	6 x M8	6 x M12	6 x M16	6 x M20	6 x M24
X	Dimension depends on the rail manufacturer				

1) Required minimum thickness of the customer-side mounting flange (steel)

Dimensions profiled rail see **5.2.5**

# Operational Instructions for ROBA®-guidestop Type 385\_ \_ \_ \_ \_ Profiled rail brake Sizes 25 - 65

(B.385.EN)

## 5.2.4 Type 3853.0 \_ \_ \_ \_ High Pressure, Short Design

Technical Data			Size				
			25	35	45	55	65
Nominal holding force F		Type 3853.0_1_ _ [N]	2750	5000	7500	10000	15000
	Tolerance	Type 3853.0_ _ _ _	0% / +150%				
		Type 3853.1_ _ _ _	-20% / +40%				
Weight		[kg]	1.5	3.3	5.1	8.4	15.6
Operating pressure		min.	20				
		max. [bar]	28				
Rigidity		[N/μm]	200	380	490	860	1000
Maximum sliding speed		[m/s]	2				
Pneumatic connection (7)	Tightening torque	[Nm]	12				
	Thread		M5	1/8"			
Air consumption per switching procedure in standard litres at min. operating pressure		Type 3853.0_1_ _ [NL]	0.158	0.300	0.448	0.602	0.650
Ambient Temperature		[°C]	-10 to +60				
Proximity switch Hexagon nut Item 12.2		Tightening torque	[Nm]	2			
		Thread	M5				
Pressure medium			Compressed air with compressed air quality acc. ISO 8573-1 Class 4				

Dimensions [mm]	Size				
	25	35	45	55	65
A	88	115	130	155	190
A1	70	100	120	140	170
B	14.7	21.7	27.7	35.7	43
B1 <sup>1)</sup>	10	10	15	25	35
C	58	82	96	110	134
C1	75	92	98	125	152
D2	25	25	25	25	25
E	23	34	45	53	63
m	4 x M8	4 x M12	4 x M16	4 x M20	4 x M24
X	Dimension depends on the rail manufacturer				

1) Required minimum thickness of the customer-side mounting flange (steel)

Dimensions profiled rail see **5.2.5**

# Operational Instructions for ROBA®-guidestop Type 385\_ \_ \_ \_ \_ Profiled rail brake Sizes 25 - 65

(B.385.EN)

## 5.2.5 Dimensions Profiled Rail

Dimensions [mm]		Size														
Rail manufacturer	Rail type	25					35					45				
		E1	E2	D	D1	F	E1	E2	D	D1	F	E1	E2	D	D1	F
INA	0 TSX-E	22.3	14.6	44.3	4.1	1	30	21.5	57	6.3	1	38	27	68.5	9.5	1
	1 TKSD	21.7	16	43.7	3.5	1	29.7	26.8	56.7	6.0	1	37.2	36.7	67.7	8.7	1
	2 TKVD	18.7	14.5	43.7	3.5	4	27	22.2	56	5.3	3	34.2	29.6	67.2	8.2	3.5
Bosch	0 R1805/6/7, R1845/6/7	23.4	13	45.4	5.2	1	30.8	21	57.8	7.1	1	38.8	25	69.3	10.3	1
	1 R1605/6/7, R1645/7, R2045/7	24.2	13.8	46.3	6.1	1	31.9	23.5	58.9	8.2	1	39.9	29	70.3	11.3	1
Schneeberger	C 0 MR	24.5	15	46.5	6.3	1	32.0	21	59	8.2	1	40	29	70.5	11.5	1
HIWIN	0 RG	23.6	14.7	45.6	5.4	1	30.2	22	57.2	6.5	1	38	30	68.5	9.5	1
	1 HG	22	15.8	44	3.8	1	29	23.8	56.0	5.3	1	not available				
THK	0 SRG	23	15	45	4.8	1	30	23	57	6.3	1	37	32	69	10	2.5
	1 SHS	20	17.6	42.5	2.3	1.5	26	27	54.5	3.8	2.5	32	37.5	66	7	4.5
Rollon	F 0 MR	22	15.2	44	3.8	1	29	25	56	6	1	38	34	68.5	9.5	1
NSK	G 0 RA	24	13	46	5.8	1	31	21.4	58	7.3	1	38	28.5	68.5	9.5	1
NTN-SNR	H 0 BG/LGB	19.2	17.6	42.2	2	2	26	27	54.5	3.8	2.5	31.1	37.5	65	6	4.4
IKO	J 0 LRX/MX	24.5	13.8	46.5	6.3	1	32	20	59	8.3	1	38	28	68.5	9.5	1
SKF	0 LLU	24.3	15	46.3	6.1	1	32	21	59	8.3	1	39.8	29	70.3	11.3	1
	1 LLR	24.2	16.9	46.2	6	1	31.8	24.9	58.8	8.1	1	39.8	33	70.3	11.3	1

Dimensions [mm]		Size									
Rail manufacturer	Rail type	55					65				
		E1	E2	D	D1	F	E1	E2	D	D1	F
INA	0 TSX-E	45	31.8	83.8	11.5	1	53.8	38.2	97.5	10.8	1
	1 TKSD	not available					not available				
	2 TKVD	41.5	35.8	85.0	12.7	5.7	not available				
Bosch	0 R1805/6/7, R1845/6/7	47.6	31	86.4	14.1	1	57.9	36.2	101.6	14.9	1
	1 R1605/6/7, R1645/7, R2045/7	47.9	34.6	86.7	14.4	1	59.9	40	103.5	16.8	1
Schneeberger	C 0 MR	48	35	86.8	14.5	1	58	43	101.7	15	1
HIWIN	0 RG	44	38	82.8	10.5	1	53	44	96.7	10	1
	1 HG	not available					not available				
THK	0 SRG	43	38	81.8	9.5	1	54	45	99.2	12.5	2.5
	1 SHS	38	38	78	5.7	2.2	53	49	96.7	10	1
Rollon	F 0 MR	38	42	78.8	6.5	3	not available				
NSK	G 0 RA	43.5	30.8	83.5	11.2	2.2	55	35	100.2	13.2	2.5
NTN-SNR	H 0 BG/LGB	38	43	78	5.7	2.2	not available				
IKO	J 0 LRX/MX	43	32	81.8	9.5	1	56	40	99.7	13	1
SKF	0 LLU	47.8	35	86.6	14.3	1	55	43	99.8	13	2
	1 LLR	not available					not available				

Released profiled rails with restriction (rail hardness <HRC 55 see table "Operating mode and profiled rail hardness" (section **8.1.2**))

## 6 Intended Use

See also section 2.3

### 6.1 Guidelines for Application

- ☐ Please observe the correct dimensioning of clamping or braking force, friction work and switching frequency at an EMERGENCY STOP for safe holding of the mass and safe compliance of the required braking distance.
- ☐ Static application:  
(clamping unit) Type 385\_0\_ \_ \_
  - Holding and clamping in case of power failure
  - In case of pressure drop
  - EMERGENCY STOP
- ☐ Dynamic application  
(brake unit) Type 385\_1\_ \_ \_
  - Holding and clamping in case of power failure
  - In case of pressure drop
  - EMERGENCY STOP
  - Braking/stopping of linear movements
- ☐ Application in clean environments (penetration of lubricating greases, coarse dust and other substances which reduce friction value can have a negative effect on the clamping / braking function).
- ☐ Application in enclosed buildings (in tropical regions, in high humidity and temperatures below 0 °C with long downtimes, and sea climates only after taking special measures).

► Please contact **mayr®** power transmission.

### 6.2 Limits

- ☐ The brake is not suitable for use in severely contaminated environments
- ☐ The brake is not suitable for application in high ambient temperatures >70 °C
- ☐ Brake is not suitable for use in liquid media
- ☐ Brake is not suitable for use in a vacuum
- ☐ Brake is not suitable for contact with abrasive media (e.g. abrasive and grinding dust)
- ☐ Brake is not suitable for contact with aggressive, corrosive media (e.g. solvents, acids, lyes, salts etc.)
- ☐ Brake is not suitable for contact with foodstuffs

### 6.3 Reasonably Foreseeable Misuse

The following uses are prohibited and may generate hazards.

- ☐ Any opening of the screws on the housing.
- ☐ Operation without profiled rail.
- ☐ Exceedance of the stated maximum operating pressure.
- ☐ Changes to brakes through additional cut-outs, bores etc.

### 6.4 Duration of Use

20 years or on reaching the T10d (for definition, see EN ISO 13849-1) duration of use.

## 6.5 Brake Dimensioning

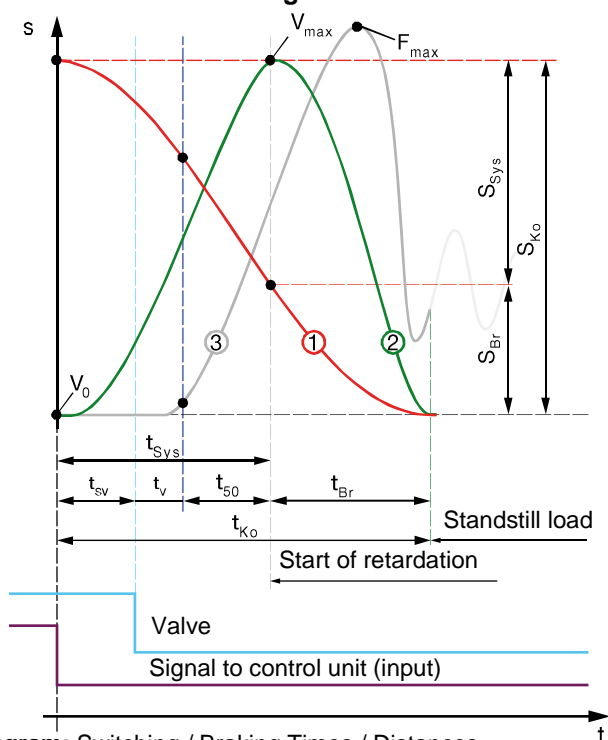


Diagram: Switching / Braking Times / Distances

### Name

1		Distance
2		Speed
3		Axial force
$\beta$	[°]	Angular position 0° (horizontal) to 90° (vertical)
$a_B$	[m/s <sup>2</sup> ]	<b>Acceleration</b> of the downward-moving load, dependent on the angular position
$a_v$	[m/s <sup>2</sup> ]	Retardation
$g$	[m/s <sup>2</sup> ]	Gravitational acceleration (9.81 m/s <sup>2</sup> )
$F_{Br}$	[N]	Braking force for dynamic calculation
$F_{erf.}$	[N]	Required holding force
$F_{Nenn}$	[N]	Nominal holding force (minimum holding force)
$F_{NGes}$	[N]	Total nominal holding force (one or more brakes)
$F_{max}$	[N]	Maximum holding force
$m$	[kg]	Load mass
$S_{Br}$	[m]	<b>Braking distance:</b> Distance from the beginning of the retardation up to the standstill of the load
$S_{Sys}$	[m]	<b>System distance:</b> Distance travelled by the load until the retardation begins.
$S_{Ko}$	[m]	<b>Stopping distance:</b> Distance from the signal interruption up to standstill of the load
$t_{50}$	[s]	Brake switching time
$t_v^{1)}$	[s]	Valve switching time (not applicable for Type 382.0 _ _ _)
$t_{sv}$	[s]	Switching time control unit (signal processing time)
$t_{sys}$	[s]	System switching time
$t_{Br}$	[s]	Brake braking time

### General

When selecting the brake, the nominal holding force must be greater or equal to the required holding force.

$$F_{Nenn} \geq F_{erf.} \quad [N]$$

### Dimensioning for dynamic braking (EMERGENCY STOP)

For safety reasons, at least the weight load of the masses to be held +100 % reserve must be provided.

The larger the ratio of the nominal holding force to the required holding force, the shorter the stopping distance (for the same technical conditions)

The minimum required holding force can be calculated with the following formula:

$$F_{erf.} = \frac{m \times g}{0.5} \quad [N]$$

### Dimensioning for static holding (clamping)

For safety reasons, at least the minimum weight load of the masses to be held +20 % reserve must be provided.

The minimum required holding force can be calculated with the following formula:

$$F_{erf.} = \frac{m \times g}{0.8} \quad [N]$$

The stopping distance / stopping time of the load to be braked is strongly dependent on the following influences:

- ☐ Switching time control unit (signal processing)
- ☐ Switching time of the control valve
- ☐ Switching time of the brake
- ☐ Cross-section and length of the lines

The larger the sum of the switching times, the later the retardation of the load occurs (due to longer periods of acceleration). The stopping distance / the stopping time becomes longer (with constant holding force).

### Name

$t_{Ko}$	[s]	<b>Stopping time:</b> Time from the signal interruption up to standstill of the load
$V_0$	[m/s]	Initial speed
$V_{max}$	[m/s]	Maximum speed

If you have any questions, please contact **mayr®** power transmission.

# Operational Instructions for ROBA®-guidestop Type 385\_ \_ \_ \_ \_ Profiled rail brake Sizes 25 - 65

(B.385.EN)

## 6.5.1 Calculation Example (Dynamic Braking)

Data		
Angular position profiled rail	$\beta$	= 90° (vertical axis)
Mass	m	= 200 kg
Initial speed	V <sub>0</sub>	= 0.5 m/s
Valve switching time	t <sub>v</sub>	= 0.016 s
Switching time control system	t <sub>sv</sub>	= 0.020 s
Existing operating pressure		= 6 bar

### 1. Pre-selection of braking force

$$F_{\text{erf.}} = \frac{m \times g}{0.5} \quad [\text{N}]$$

$$F_{\text{erf.}} = \frac{200 \times 9.81}{0.5} = 3924 \quad [\text{N}]$$

Selected: ROBA®-guidestop Size 35,  
Type 3850.1\_2\_ at 6 bar,  
Nominal holding force F<sub>Nenn</sub> = 4000 N  
(from section 5.2 Table "Technical Data")

### 2. Calculation of the stopping distance/stopping time

Checking the selected brake size

Acceleration of the load				
a <sub>B</sub>	=	g × sin(β)	=	9.81 × sin(90°) = 9.81 [m/s <sup>2</sup> ]

System distance			
S <sub>Sys</sub>	=	V <sub>0</sub> × t <sub>Sys</sub> + a <sub>B</sub> × t <sub>Sys</sub> <sup>2</sup> × 0.5	[m]
S <sub>Sys</sub>	=	0.5 × 0.079 + 9.81 × 0.079 <sup>2</sup> × 0.5	[m]
S <sub>Sys</sub>	=	0.071	[m]
t <sub>Sys</sub>	=	t <sub>50</sub> + t <sub>v</sub> + t <sub>sv</sub>	[s]
t <sub>Sys</sub>	=	0.079	[s]

### Braking distance

$$S_{\text{Br}} = \frac{V_{\text{max}}^2}{2 \times \left( \frac{F_{\text{NGes}}}{m} - a_{\text{B}} \right)} \quad [\text{m}]$$

$$S_{\text{Br}} = \frac{1.272}{2 \times 10.19} = 0.079 \quad [\text{m}]$$

$$V_{\text{max}} = V_0 + a_{\text{B}} \times t_{\text{Sys}} \quad [\text{m/s}]$$

$$V_{\text{max}} = 0.5 + 9.81 \times 0.079 = 1.27 \quad [\text{m/s}]$$

### Stopping distance

$$S_{\text{Ko}} = S_{\text{Br}} + S_{\text{Sys}} \quad [\text{m}]$$

$$S_{\text{Ko}} = 0.079 + 0.071 = 0.15 \quad [\text{m}]$$

### Stopping time

$$t_{\text{Ko}} = t_{\text{Br}} + t_{\text{Sys}} \quad [\text{s}]$$

$$t_{\text{Ko}} = 0.122 + 0.079 = 0.201 \quad [\text{s}]$$

$$t_{\text{Br}} = \frac{V_{\text{max}}}{\frac{F_{\text{NGes}}}{m} - a_{\text{B}}} = \frac{1.27}{10.38} = 0.122 \quad [\text{s}]$$

### Retardation (for system dimensioning)

$$a_{\text{v}} = \frac{F_{\text{NGes}} \times 2.5}{m} - g = \frac{4000 \times 2.5}{200} - 9.81 = 40.19 \quad [\text{m/s}^2]$$

$$\text{Load} = \frac{a_{\text{v}}}{g} = \frac{40.19}{9.81} = 4.1 \quad [\text{g}]$$

### 3. Friction work

#### Friction work per braking action

$$Q_{\text{r}} = m \times a_{\text{B}} \times S_{\text{Br}} + 0.5 \times m \times V_{\text{max}}^2 \quad [\text{J}]$$

$$Q_{\text{r}} = 200 \times 9.81 \times 0.079 + 0.5 \times 200 \times 1.272^2 \quad [\text{J}]$$

$$Q_{\text{r}} = 316$$

#### Number of braking actions up to wear end

$$Z_{\text{zul.}} = \frac{Q_{\text{r ges}}}{Q_{\text{r}}}$$

## 6.5.2 Switching Times

Friction Work and Switching Times (Type 385_1_ _ _ ) <sup>1)</sup>			Size			
			25	35	45	55
Permitted total friction work up to wear end <sup>2)</sup>	Q <sub>r ges.</sub>	106 J	On request			
Maximum permitted friction work per braking action <sup>2)</sup>	Q <sub>r zul.</sub>	[J]	On request			
Brake switching time Type 3850/1	t <sub>50</sub>	[s]	0.030	0.035	0.035	0.035
Brake switching time Type 3852/3	t <sub>50</sub>	[s]	On request			

<sup>1)</sup> For friction work Type 385\_0\_ \_ \_ , please contact mayr® power transmission. The switching times also apply for Type 385\_0\_ \_ \_ .

<sup>2)</sup> For higher friction work / total friction work, please contact mayr® power transmission.



#### Please Observe!

A quick-action ventilating valve must be used for the stated switching times of the pneumatic ROBA®-guidestop.

## 7 Storage

### 7.1 Brake Storage

- ☐ Store the brakes in a horizontal position, in dry rooms and dust and vibration-free.
- ☐ Relative air humidity < 50 %.
- ☐ Temperature without major fluctuations within a range from 0 °C up to +40 °C.
- ☐ Do not store in direct sunlight or UV light.
- ☐ Do not store aggressive, corrosive substances (solvents / acids / lyes / salts etc.) near to the brakes.

For longer storage lasting more than 2 years, special measures are required.

► Please contact **mayr®** power transmission.



Proximity switches are subject to a failure rate. For the release monitoring device on ROBA®-topstop® brakes, a proximity switch with a very high reliability and a high MTBF value (Mean Time Between Failure) is used.

Proximity switches are components according to IEC60947-5-2 and are to be used according to the standard. They are electrically specified for applications in well protected (controlled) operating environment (par. 8.2.6). The power supply must be selected accordingly. Additional measures, such as separate cable routing and shielded cables, may be necessary for EMC-compliant installation in machines and systems, especially for long cables.

## 8 Installation

### 8.1 Installation Conditions

Please observe before installation!

#### 8.1.1 General

- ☐ The brake is delivered assembled ready for installation.



#### Please Observe!

Leave the brake in its installed condition!

- ☐ The nominal holding force is set manufacturer-side via pre-tensioning the springs (6). The ball-headed tensioning screws (3) for adjustment of the stroke path are secured against twisting with Loctite 243.



#### CAUTION The nominal holding force might be influenced.

Customer-side turning of the ball point screw (3) can lead to malfunctions.  
Never turn the ball-headed tensioning screws.



# Operational Instructions for ROBA®-guidestop Type 385\_.\_ \_ \_ \_ Profiled rail brake Sizes 25 - 65

(B.385.EN)

## 8.1.2 Profiled rail

Operating mode and profiled rail hardness

Operating mode	Static clamping		Sporadic EMERGENCY STOP brakings		Dynamic braking (min. 2000)	
Profiled rail hardness <sup>1)</sup>	<HRC 55	≥HRC 55	<HRC 55	≥HRC 55	<HRC 55	≥HRC 55
Type 38_ _0 clamping unit	permitted	permitted	not permitted	permitted	not permitted	not permitted
Type 38_ _1 brake unit	permitted	permitted	permitted	permitted	permitted	permitted

1) Requirements profiled rail must be fulfilled (see table „Profiled rail requirements“)

### Profiled rail requirements

mayr® power transmission recommends the use of profiled rails from approved rail manufacturers. The profiled rail must accord with the manufacturer and rail type stated in the order number.



#### Please Observe!

The ROBA®-guidestop function can only be guaranteed on a proper rail surface.

#### ATTENTION Never operate the brake without a profiled rail

Activation of the brake without a profiled rail will cause damage. The brake can no longer be used.

#### CAUTION



The clamping effect might get influenced by friction value-reducing materials, such as tough greasy lubricants, greases or separating agents - please clean, if necessary; see section **11.4**

**The effects of friction value-reducing substances on the holding force must be checked before initial operation.**

When using other profiled rails the following applies:

Tolerance thickness	±0.02 mm
Surface quality	Ra < 0.8 µm
Yield point	min. 400 N/mm <sup>2</sup> (e.g. C45)
Evenness/Straightness	≥0.01 mm

# Operational Instructions for ROBA®-guidestop Type 385 \_ \_ \_ \_ \_ Profiled rail brake Sizes 25 - 65

(B.385.EN)

## 8.1.3 Controls

The *mayr*® power transmission recommends the following pneumatic control units.  
The piston space is filled with compressed air, thus suspending the spring force. The compressed air in the piston space is deduced in case of power failure. The spring force has an effect on the clamping element. The profiled rail is clamped/ braked.

### Hose length and diameter

If the specified lengths and diameters are exceeded, the switching times increase.

Maximum length	3 m
Diameter	8 mm at 6 bar 6 mm at 20 bar

### Switching time-related Applications



#### Recommendation!

For applications to optimize the switching times (reduction of the braking distance)

- ☐ Select the shortest possible conduction paths. Cross-sections and line lengths have a considerable effect on the reaction times.
- ☐ For quicker brake engagement, we recommend a quick-action ventilating valve (6) (selection depending on the compressed air connection thread).



#### Please Observe!

The compressed air outlet must not be affected by any additional components.

- ☐ The size and speed of the 3/2 directional control valve (5) has an effect on the switching time.

### Safety-related applications



#### Recommendation!

For applications to optimize the safety (in case of danger to people)

- ☐ Use a proximity switch for switching condition monitoring (see section 9.1)
- ☐ Please use a pressure monitoring device (pressure switch 6) additionally between the brake and the quick-action ventilating valve.

### WARNING Dropping of the load possible



With residual pressure in the line, the full clamping force cannot be guaranteed.

Use a pressure switch to ensure that the line is pressureless (<0.5 bar)

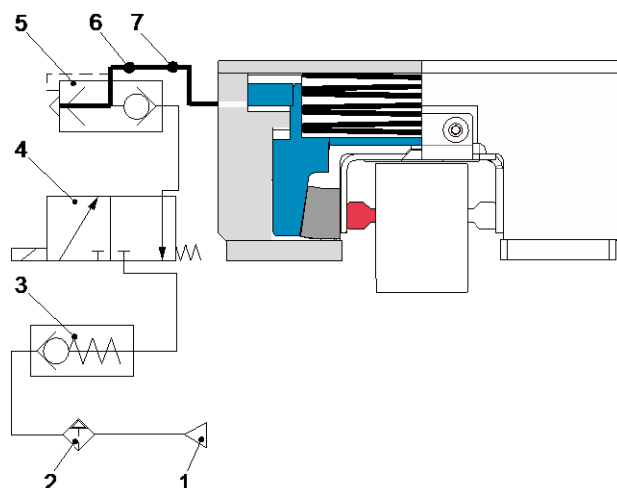


Fig. 3

Item	Name
1	Pressure source
2	Maintenance unit
3	Non-return valve (in case of pressure fluctuations)
4	3/2-directional control valve (installation as near to the brake as possible)
5	Quick-action ventilating valve (for fast switching times)
6	Pressure switch: Switching point <0.5 bar (brake closed) • Protection against personal hazards / machine damage
7	Pressure switch: Min. operating pressure (brake opened) • Protection against machine damage - in case of pressure fluctuations - In case of pressure drop e.g. Leakages

# Operational Instructions for ROBA®-guidestop Type 385 \_ \_ \_ \_ \_ Profiled rail brake Sizes 25 - 65

(B.385.EN)

## 8.2 Installation (Figs. 1 and 2)

### 8.2.1 Pre-requisites

- ☐ Unpack the brake
- ☐ Check for completeness
- ☐ Check the data on the Type tag
- ☐ Visual inspection (e.g. after longer storage period)



#### **CAUTION Please observe the own weight of the brake**

The brake may drop during lifting / disassemble. The consequences may be crush injuries and impact injuries.

### 8.2.2 Preparation

- ☐ Have the necessary tools ready:
  - Spanners etc.
  - Torque wrenches
- ☐ Please observe the required minimum thickness of the customer-side mounting flange (dimension B<sub>1</sub>, see Chapter 5.2).
- ☐ Provide fixing screws (not included in the standard scope of delivery)

Fixing screw sizes and tightening torques				
Size	Thread	Tightening torque	Property class	Max. screw-in depth
25	6(4) x M8	32 Nm	10.9	14.7 mm
35	6(4) x M12	109 Nm	10.9	21.7 mm
45	6(4) x M16	260 Nm	10.9	27.7 mm
55	6(4) x M20	520 Nm	10.9	36 mm
65	6(4) x M24	900 Nm	10.9	43 mm

All tightening torques are recommendations only. These data do not relieve the user from checking the data regarding the actual installation situation.

### 8.2.3 Installation Procedure



With a wiper (optional), connections m<sub>3</sub> and m<sub>4</sub> can no longer be used.

1. Remove the screw plug (9) from the required pneumatic connection (7)
2. Connect the pneumatic hose via a thread on the pneumatic connection (7)
3. Pressurize the brake with operating pressure see technical data section **5.2**.

4. Unscrew and remove the transportation lock (10)

#### **ATTENTION The brake could be damaged**

Removal of the transportation lock (10) in de-pressurized condition of the brake leads to damage.

Remove the transportation lock (10) (red screw head) only in pressurized condition.

5. **Optional:** Screw on the wiper (14) with the fixing screws for wiper (14.1) without torque. Screw securement with Loctite 243.
6. Push the brake onto the profiled rail.
7. Screw in the fixing screws (without torque).
8. Screw securement with Loctite 243
9. Switch the brake in de-pressurized state, thereby placing it under tension (centring).

#### **ATTENTION Only close the brake with guides**

Brake must be pushed onto the profiled rail.

10. Tighten the diagonally opposite fixing screw step by step.  
Tightening torque = 10 Nm.
11. Pressurize the brake.
12. Switch the brake in de-pressurized state.
13. Tighten the diagonally opposite fixing screw step by step.  
For tightening torque, see table in section **8.2.2**.

#### **CAUTION Load crash possible**



The brake will not work with the transportation locks (10) screwed in.

The transportation lock (10) (red screw head) must be removed.

14. **Optional:** Tighten the fixing screws for wiper (14.1) to the torque stated in the table.

Size	Thread	Tightening torque
25	4 x M4	2.5 Nm
35	4 x M5	5 Nm
45	4 x M5	5 Nm
55	4 x M6	9 Nm
65	4 x M6	9 Nm

# Operational Instructions for ROBA®-guidestop Type 385\_.\_.\_.\_ Profiled rail brake Sizes 25 - 65

(B.385.EN)

## 9 Options

### 9.1 Switching Condition Monitoring (NO Contact)

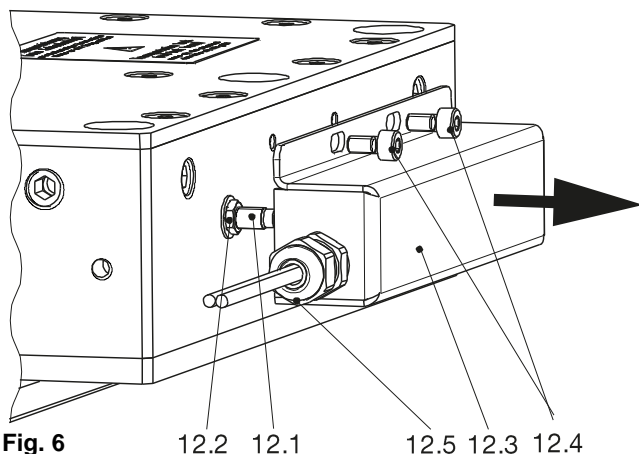


Fig. 6



#### Please Observe!

The switching condition monitoring unit is installed and adjusted manufacturer-side.

A proximity switch (12.1) emits a signal for every brake condition change.

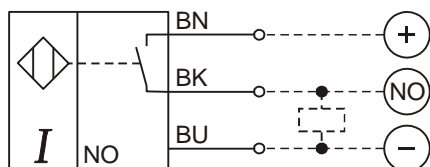
On Type 3850/3852 2 proximity switches (12.1) are installed.

#### Plausibility check

Brake opened	Pressure switched on	<b>Signal "OFF"</b>
	Pressure switch Item 7, min. operating pressure (see <b>8.1.3</b> )	
Brake closed	Pressure switched off	<b>Signal "ON"</b>
	Pressure switch Item 6, no pressure (see <b>8.1.3</b> )	

The customer is responsible for a signal evaluation of both conditions.

#### Wiring Diagram:



Technical Data	
PNP/NO contact	
Rated operating voltage:	U <sub>e</sub> = 24 VDC
Operating voltage:	U <sub>B</sub> = 10...30 VDC
Cable length:	up to size 35 2000 mm
	from size 45 5000 mm

## Replacement of the proximity switch



#### Please Observe!

Proximity switches cannot be guaranteed fail-safe. Therefore, please ensure appropriate access for replacement or adjustment.

## Pre-requisites

### WARNING



#### Load crash possible

Gravity-loaded axes must be secured before beginning the work: this secures them against dropping.

- ☐ Brake is pressureless (enclosed) on the profiled rail.

## De-installation

1. Unscrew the cable gland (12.5)
2. Unscrew the cap screws (12.4)
3. Remove the cover plate (12.3)
4. Unscrew the hexagon nut (12.2), unscrew and remove the proximity switch (12.1).

## Installation and Adjustment

Initial position: Proximity switch is not connected

Activity	Result
1. Check whether the brake is de-pressurized	
2. Screw the proximity switch in carefully up to its limit stop	
2.1 Unscrew the proximity switch one full turn (360°)	
3. Counter the proximity switch (12.1) with the hexagon nut (12.2) (tightening torque see section <b>5.2</b> )	
4. Connect the proximity switch (see wiring diagram)	<b>Signal "ON"</b>
5. Adjust the operating pressure	<b>Signal "OFF"</b>
6. Carry out a functional inspection	
6.1 Switch off the pressure	<b>Signal "ON"</b>
6.2 Switch on the pressure	<b>Signal "OFF"</b>
7. Pull the cable through the cable gland (12.5)	
8. Screw on the cover plate (12.3)	
9. Tighten the cable gland (12.5)	

## 10 Initial Operation

### 10.1 Brake Inspection (before initial operation)

- ☐ Check all fixing screws for the required tightening torque.
- ☐ Visual inspection of the pneumatic connections and lines.
- ☐ Check for leakages (pressure switched on).
- ☐ Check dimension E<sub>2</sub> (rail waistline see table [5.2.5](#))

### 10.2 Brake Test (Static)



**CAUTION** During the Brake Test danger to personnel and damage to machines cannot be ruled out in case of malfunctions (incorrect installation, control errors etc.).

Do not enter the danger zone.

Possibly take measures for catching or damping the load.

Check dimensioning!

#### 10.2.1 (Static) Brake Inspection

- ☐ On vertical axes, a brake inspection is carried out via load assumption or via the drive.



**Recommendation!**

Test the brake using the nominal holding force or the maximum load mass.

## 10.3 Brake Inspection (During Operation)



**Recommendation!**

A test must be carried out to guarantee the necessary holding force with all control and brake times if a risk is generated by gravity-loaded axes. A cyclic brake inspection during running operation provides additional safety. Depending on the danger, please observe the respective regulations and standards.

### 10.3.1 Regular Function Inspection (static)

- ☐ Depending on the application requirements, we recommend carrying out regular braking force inspections (depending on the application), e.g. check the static holding force 1 x per shift with nominal holding force or with maximum load mass.
- ☐ In addition to the regular inspection of the holding force, we recommend the application of a switching condition monitoring device (option), in order to request the brake switching condition or to prevent a possible load crash on vertical installation.



**Recommendation!**

The holding force may be reduced by friction value-reducing materials. If the brake during the functional inspection does not achieve the nominal holding force, repeat using 90 % of the nominal holding force and clean the profiled rail at the next opportunity (see section [11.4](#)).

# Operational Instructions for ROBA®-guidestop Type 385\_.\_ \_ \_ \_ Profiled rail brake Sizes 25 - 65

(B.385.EN)

## 11 Maintenance / Inspection / Switching Frequency

### 11.1 Switching Frequency

The **ROBA®-guidestop** is designed for a switching frequency of up to 2.000.000 switching actions.  
(At a switching frequency >200 000, please reckon with a nominal holding force reduction of 20 %.)

### 11.2 Inspection

Check the condition

Measure	Condition		Interval	Implementation
Visual inspection	Pneumatics	Check that the connections and connection lines are leak-proof.	To be determined by machine operator depending on the installation situation ► Please contact <i>mayr</i> ® power transmission.	Qualified personnel
	Profiled rail	Check the profiled rail for wear	After every EMERGENCY STOP occurrence.	
	Wear indicators	Nominal holding force is not reached (slipping). Replace brake	To be determined by machine operator depending on the installation situation ► Please contact <i>mayr</i> ® power transmission.	<i>mayr</i> ® power transmission

### 11.3 Maintenance

The **ROBA®-guidestop** is largely maintenance-free.

Measure	Note/Comment	Interval	Implementation
Functional Inspection	Carry out a regular functional inspection	see section <b>10.3</b>	Qualified personnel
Check the profiled rail	The profiled rail must be checked regularly for contamination with friction value-reducing materials; it must be cleaned, if necessary (see section <b>11.4</b> ).  Special measures may be necessary if the device is subject to large amounts of dirt or dust or is operating in extreme ambient conditions. <b>Please contact <i>mayr</i>® power transmission.</b>	at least every 6 months	



Should the **ROBA®-guidestop** no longer meet the required characteristics or should the necessary safety for work on the machine or system no longer be given, the brake must be checked at *mayr*® power transmission and, if necessary, professionally repaired and approved.

## 11.4 Cleaning

Only in case severe contamination has an adverse effect on the brake function

- ☐ Clean the profiled rail (with a clean, lint-free cloth) using ethyl alcohol.

## 12 De-installation

### CAUTION



#### Please observe the own weight of the brake

The brake may drop during lifting / disassemble. The consequences may be crush injuries and impact injuries.

### WARNING



#### Load crash possible

The brake must be load-free.  
Please check that it is load-free before de-installation.

- ☐ Provide security in the danger zone
- ☐ Support the load

De-installation takes place by following the "Installation procedure" section 8.2.3 backwards.



#### Please Observe!

Prior to the brake being pushed from the profiled rail, the transportation lock (10) must be screwed in.

Brake must be pressurized with min. operating pressure.

Completely screw in the transportation lock (10) (2 or 4 screws) by hand up to its limit.

Torque = approx. 2 Nm

## 13 Disposal

For disposal, please observe the specific regulations of the respective country of application.

#### All steel components:

Steel scrap (Code No. 160117)

#### Seals, O-rings, V-seals, elastomers:

Plastic (Code No. 160119)

#### 14 Malfunctions / Breakdowns

Malfunction	Possible Causes	Solutions	Implementation
Brake does not release	Operating pressure too low	Check operating pressure and increase if necessary	Qualified personnel
	Defective valve	Replace defective valve	
	Leakage in the feed line	Seal leakage	
Brake does not brake	Brake wear limit reached	Replace brake	<b>mayr®</b> power transmission
	Defective valve	Replace defective valve	Qualified personnel
	The profiled rail does not fit to the brake	Check dimensioning, check technical data	
Delays in brake opening	Cross-section of feed line too small	Mount line with larger cross-section	Qualified personnel
Braking distance too long	The profiled rail does not fit to the brake	Check dimensioning, check technical data	
	Excessive wear on profiled rail / brake shoe	Replace brake	<b>mayr®</b> power transmission
	Cross-section of the lines too small	Mount (electric) line with larger cross-section	Qualified personnel
	Friction value-reducing materials on the profiled rail	Clean the profiled rail	
	Incorrect dimensioning	Check dimensioning, check technical data	
	3/2-directional control valve too slow		
Switching condition monitoring emits no signal	Incorrect assembly and adjustment of the switching condition monitoring system	Repeat adjustment process, see section <b>9.1</b>	Qualified personnel
	Brake does not release	See Malfunctions → Brake does not release	
	Defective cable	Replace defective cable	
	Defective proximity switch	Replace defective proximity switch	



mayr® power transmission will take no responsibility or guarantee for replacement parts and accessories which have not been delivered by mayr® power transmission, or for damage resulting from the use of these products.

15 Declaration of Conformity

## EC – Declaration of Conformity

Translation

In terms of the guidelines marked in the following list, we

Chr. Mayr GmbH + Co. KG  
Eichenstraße 1  
D-87665 Mauerstetten

declare under our sole responsibility that the products listed meet the requirements.

X	EC-Machinery directive 2006/42/EC
	EU-Low voltage directive 2014/35/EU (is covered by the machinery directive)
	Electromagnetic compatibility directive 2014/30/EU
	EU Directive on the restriction of the use of certain hazardous substances in electrical and electronic equipment 2011/65/EU (RoHS II) incl. delegated Directive 2015/863/EU amending Annex II of Directive 2011/65/EU (RoHS III)

### Pneumatic safety brake

Product	Sizes	Types	ASRI
ROBA®-guidestop®	25 - 55	385_._ _ _ _	1,2,3

Year of manufacture: see type tag

### Applied Standards, Regulations and Inspections (ASRI)

1	DIN EN ISO 12100	03/2011	Safety of machinery – General principles for design	2006/42/EC
2	DIN EN ISO 13849-1	12/2008	Safety of Machinery – Safety-related Parts of Controls	2006/42/EC
3	DIN EN ISO 4414	06/2010	Safety of Machinery – Safety-related Parts of Controls	2006/42/EC

Representatives name for the documentation: Quality Management

Mauerstetten, August 02, 2019

Ort und Datum / place and date

Dipl. Ing. (FH) / graduate engineer  
Geschäftsführer / Managing Director  
Günther Klingler