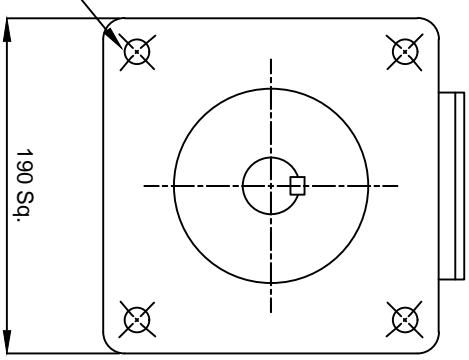
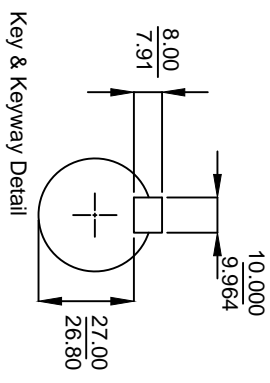


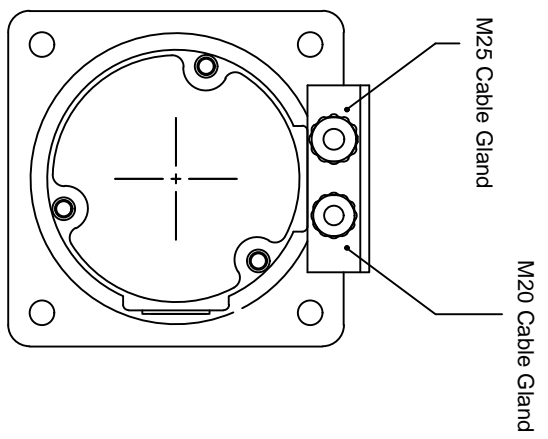
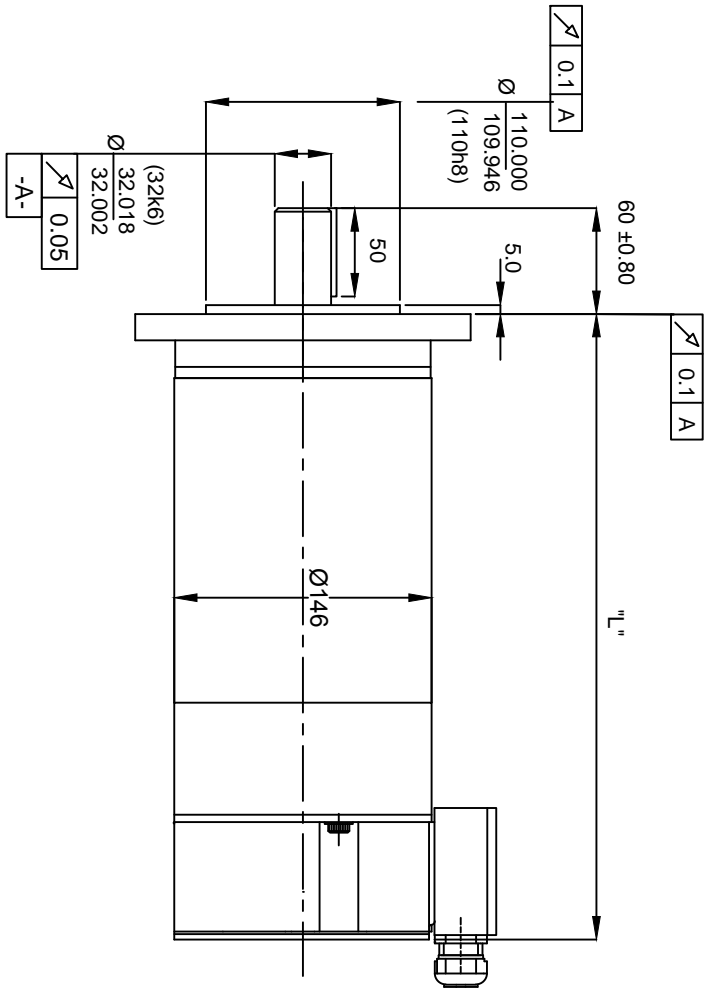


**Callan Technology replacements  
for SEM MT52 servomotors**

<b>SEM</b>	<b>Callan Technology</b>
MT52K8-87	M4-4203 F
MT52K8-62	M4-4203 E
MT52K8-50	M4-4203 K
MT52K8-37	M4-4203 J
MT52V8-87	M4-4205 A
MT52V8-69	M4-4205 B
MT52V8-50	M4-4205 M
MT52V8-37	M4-4205 D
MT52ZF8-86	Contact Callan Technology
MT52ZR8-92	Contact Callan Technology
DBMT52ZF8-86	Contact Callan Technology
DBMT52ZR8-92	Contact Callan Technology



(4) Holes, Ø 14 thru' equispaced as shown on Ø 215 PCD



Motor Type	Length "L"
M4-4204	322
M4-4205	347

Notes:-

1. With a positive current applied to positive motor terminal A1 respect to terminal A2, rotation shall be clockwise facing mounting end of motor.  
With this rotation a positive voltage shall be generated on terminal T1 of tach with respect to terminal T2.  
(Wiring diagram inside Terminal Box)
2. Motor can be mounted in any position
3. Thermostat set to open at 90°C ± 6°C & close at 70° ± 6°C falling. N.C. contacts rated to 3.0 Amps, 250V. AC., (2) Yellow leads
4. All dimensions in mm.

Tolerances:

X.X = ± 0.3  
X.XX = ± 0.1  
Ang. Dim. = ± 1°

Scale : NTS		Weight :	
Material : SEE NOTES		Remove all burrs and sharp corners	
Rare Earth Servomotor with Tach		M4-420X-32039-000	
M4-420X-32039-000		Sheet 1 of 1	

Issue	ECO. No.	Date	Name	App'd	Norm
1				Drawn	13/3/13
				App'd	

Callan Technology