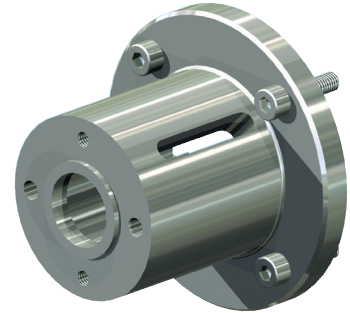
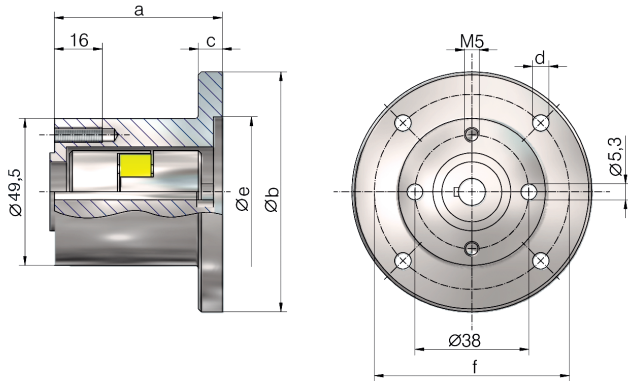


Accessories

Motor flange MF | GSZ-2, ZE-5 to ZE-25

Motor flange MF - GSZ-2



Code	Motor type	Coupling Code Bore - Ø			2 screws gearbox side 8.8	4 screws motor side 8.8 DIN 912 for motor incl. spring washers	a	Øb	c	Ød	Øe	Øf	kg
		Size	Gearbox	Motor									
GSZ-2-MF-80-51 ²⁾	56 B14C	KUZ-09	9	9	M5x55, M5x70	M5x20	51	80	9	5,5	50	65	0,22
GSZ-2-MF-80-41+P-120-15 ³⁾	63 B14B	KUZ-14	9	11	M5x55, M5x70, M5x45	M6x25	56	120	15	6,6	80	100	0,55
GSZ-2-MF-80-51+P-105-15 ²⁾	71 B14C	KUZ-14	9	14	M5x55, M5x70	M6x20	66	105	15	6,6	70	85	0,45

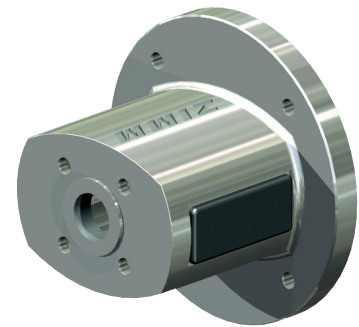
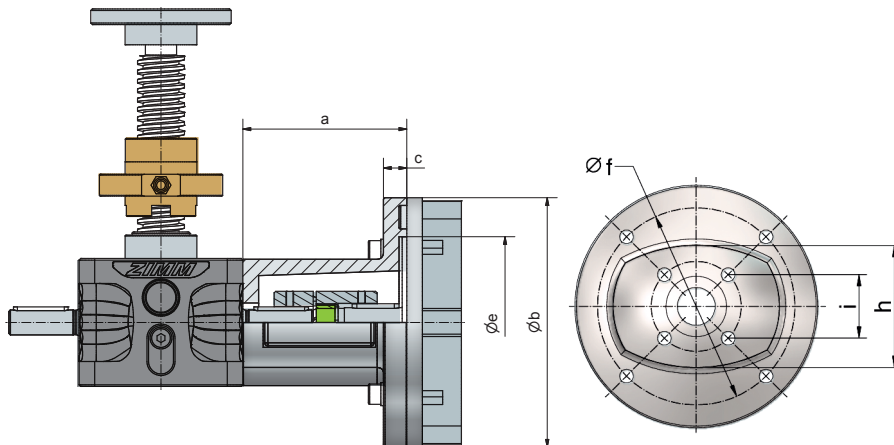
Material: hard anodised aluminium. Delivery incl. screws

1) Screws are included for all the various fitting options

2) For LB parallel to the drive axis, restricted pivot bearing range

3) LB parallel to drive axis not possible

Motor flange MF

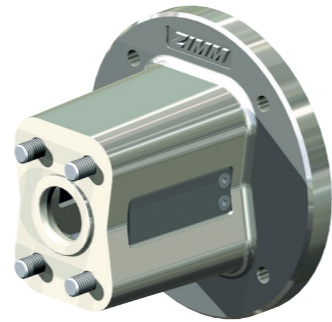
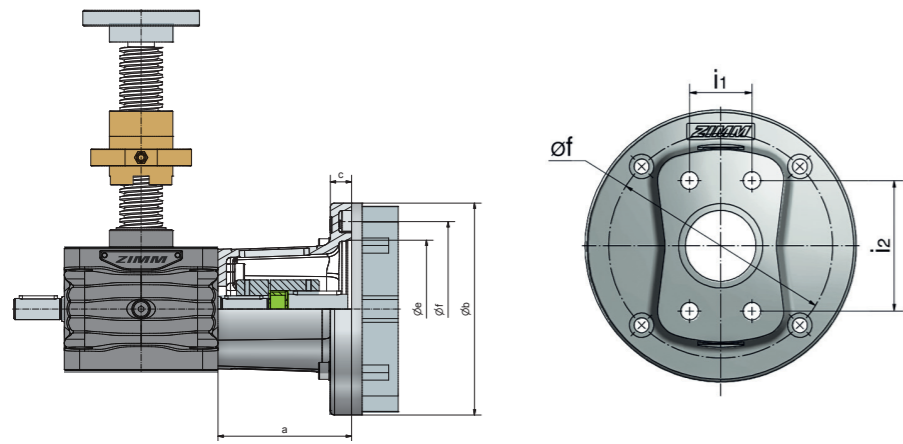


Code	Motor type	Coupling code Bore - Ø			4 screws gearbox side 8.8	4 of socket head cap 8.8 DIN 912 for motor	a	b	c	e	f	h	i	kg
		Size	Gearbox	Motor										
ZE-5-MF-120-60	63 B14B	KUZ-14	11	11	M6x12 - DIN 7991	M6x20 + spring washers	60	120	10	80	100	61	32,5	0,3
ZE-5-MF-105-68	71 B14C	KUZ-19	11	14	M6x12 - DIN 7991	M6x20 + spring washers	68	105	10	70	85	61	32,5	0,3
ZE-10-MF-120-66	63 B14B	KUZ-19	14	11	M8x16 - DIN 7991	M6x20 + spring washers	66	120	10	80	100	73	35,4	0,4
ZE-10-MF-160-75	71 B5	KUZ-19	14	14	M8x16 - DIN 7991	M8x35 + nuts	75	160	15	110	130	73	35,4	0,8
ZE-10-MF-160-90	80 B14B	KUZ-24	14	19	M8x16 - DIN 7991	M8x30 + spring washers	90	160	15	110	130	73	35,4	0,8
ZE-25-MF-160-105	71 B5	KUZ-28	16	14	M8x20 - DIN 7991	M8x35 + nuts	105	160	15	110	130	81	42	1,1
ZE-25-MF-160-105	80 B14B	KUZ-24	16	19	M8x20 - DIN 7991	M8x30 + spring washers	105	160	15	110	130	81	42	1,1
ZE-25-MF-160-105	90 B14B	KUZ-24	16	24	M8x20 - DIN 7991	M8x30 + spring washers	105	160	15	110	130	81	42	1,1
ZE-25-MF-160-122	100 B14C	KUZ-28	16	28	M8x20 - DIN 7991	M8x30 + nuts	122	160	15	110	130	81	42	1,2

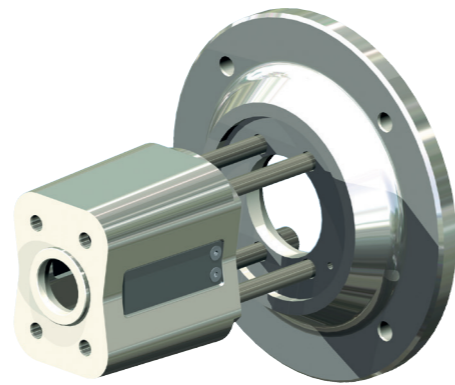
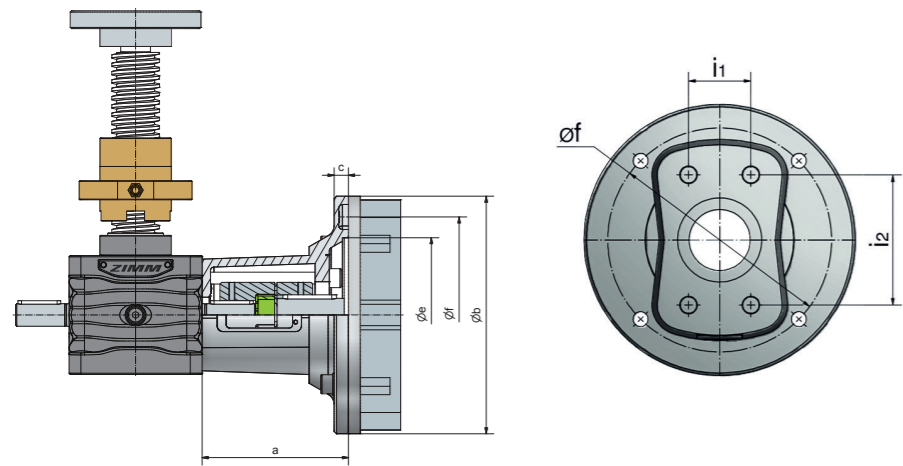
Material: aluminium, all screws galvanised nut DIN 934 and spring washers DIN 128. Delivery incl. screws

S R Accessories
Motor flange MF | ZE-35 to ZE-200

Motor flange MF



Motor flange base MF-B and motor flange plate MF-P - ZE-35 to ZE-200



Code	Motor type	Coupling code Bore - Ø			4 screws gearbox side DIN 912	4 screws motor side DIN 912	a	b	c	e	f	i1	i2	kg
		Size	Gearbox	Motor										
ZE-35-MF-160-111	80 B14B	KUZ-24	19	19	M10x30	M8x25 ¹⁾	111	160	15	110	130	36	62	2,7
ZE-35-MF-160-111	90 B14B	KUZ-24	19	24	M10x30	M8x25 ¹⁾	111	160	15	110	130	36	62	2,7
ZE-35-MF-B + ZE-35-MF-P-200	100 B14B	KUZ-28	19	28	M10x120	M10x30 ¹⁾	123	200	12	130	165	36	62	3,6
ZE-35-MF-B + ZE-35-MF-P-200	112 B14B	KUZ-28	19	28	M10x120	M10x30 ¹⁾	123	200	12	130	165	36	62	3,6
ZE-35-MF-B + special plate	Servomotors, geared motors, Nema, ...													
ZE-50-MF-200-116	90 B5	KUZ-28	20	24	M10x30	M10x45 ²⁾	116	200	20	130	165	50	70	4,1
ZE-50-MF-200-126	100 B14B	KUZ-28	20	28	M10x30	M10x35 ¹⁾	126	200	20	130	165	50	70	4,3
ZE-50-MF-200-126	112 B14B	KUZ-28	20	28	M10x30	M10x35 ¹⁾	126	200	20	130	165	50	70	4,3
ZE-50-MF-B + special plate	Servomotors, geared motors, Nema, ...													
ZE-100/150-MF-200-138	100 B14B	KUZ-28	25	28	M12x40 ⁴⁾	M10x35 ¹⁾	138 ³⁾	200	20	130	165	46	96	5,3
ZE-100/150-MF-200-138	112 B14B	KUZ-28	25	28	M12x40 ⁴⁾	M10x35 ¹⁾	138 ³⁾	200	20	130	165	46	96	5,3
ZE-100/150-MF-B + P-200	132 B14C	KUZ-38	25	38	M12x150 ⁴⁾	M10x65 ¹⁾	161 ³⁾	200	48	130	165	46	96	8,7
ZE-100/150-MF-B + special plate	Servomotors, geared motors, Nema, ...													
ZE-200-MF-200-168	100 B14B	KUZ-38	28	28L	M16x45	M10x40 ¹⁾	168	200	20	130	165	56	100	8,1
ZE-200-MF-200-168	112 B14B	KUZ-38	28	28L	M16x45	M10x40 ¹⁾	168	200	20	130	165	56	100	8,1
ZE-200-MF-200-168	132 B14C	KUZ-38	28	38	M16x45	M10x40 ¹⁾	168	200	20	130	165	56	100	8,1
ZE-200-MF-200-168 + P-350	160 B5	KUZ-45	28A	42	M16x45	M16x70 ²⁾	198	350	30	250	300	56	100	24,8
ZE-200-MF-200-168 + special plate	Servomotors, geared motors, Nema, ...													

Material: GGG-50, corrosion-resistant, all screws galvanised nut DIN 934 and spring washers DIN 128. Delivery incl. Screws.

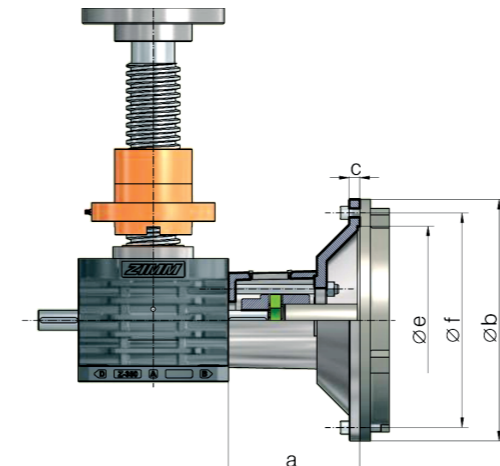
- 1) incl. spring washers
- 2) incl. nuts and spring washers
- 3) With GSZ-100: +6,5mm (Plate)
- 4) With GSZ-100: M12x45/M12x160

S R Accessories
Motor flange MF | ZE-250 to Z-1000

Motor flange MF



Motor flange base MF-B and motor flange plate MF-P - ZE-350 to Z-500



Code	Motor type	Coupling code Bore - Ø			4 screws gearbox side DIN 912	4 screws motor side DIN 912	a	b	c	e	f	kg
		Size	Gearbox	Motor								
ZE-250-MF-200-168	100 B14B	KUZ-38	28L	28L	M16x55	M10x40 ¹⁾	168	200	20	130	165	8,5
ZE-250-MF-200-168	112 B14B	KUZ-38	28L	28L	M16x55	M10x40 ¹⁾	168	200	20	130	165	8,5
ZE-250-MF-200-168	132 B14C	KUZ-38	28	38	M16x55	M10x40 ¹⁾	168	200	20	130	165	8,5
ZE-250-MF-200-168 + P-350	160 B5	KUZ-45	28A	42	M16x55	M16x70 ²⁾	198	350	30	250	300	20,5
ZE-250-MF-200-168 + P-350	180 B5	KUZ-55	28A	48	M16x55	M16x70 ²⁾	198	350	30	250	300	20,5
ZE-250-MF-200-168 + P-400	200 B5	KUZ-55	28A	55	M16x55	M16x70 ²⁾	200	400	32	300	350	25
ZE-250-MF-200-168 + special plate	Servomotors, geared motors, Nema,...											
ZE-350-MF-B + P-350	180 B5	KUZ-55	38A	48	4x M18x230 ³⁾	M16x60 ²⁾	211	350	19	250	300	24
ZE-350-MF-B + P-400	200 B5	KUZ-55	38A	55	4x M18x230 ³⁾	M16x60 ²⁾	211	400	19	300	350	27
ZE-350-MF-B + P-450	225 B5	KUZ-60	38A	60	4x M18x230 ³⁾	8x M16x60 ²⁾	243	450	19	350	400	33
ZE-350-MF-B + special plate	Servomotors, geared motors, Nema,...											
Z-500-MF-SO	Dimensions on request											
Z-750-MF-SO	Dimensions on request											
Z-500-MF-B + special plate	Dimensions on request - Servomotors, geared motors, Nema,...											
Z-750 und Z-1000 motor flange on request	Dimensions on request											

Material: GGG-50, corrosion-resistant, all screws galvanised nut DIN 934 and spring washers DIN 128. Delivery incl. screws.

- 1) incl. spring washers
- 2) incl. nuts and spring washers
- 3) Threaded bolt 8.8 with nuts and spring washers