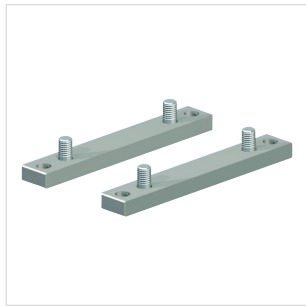
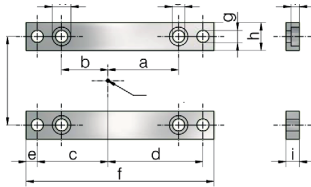


S R Accessories

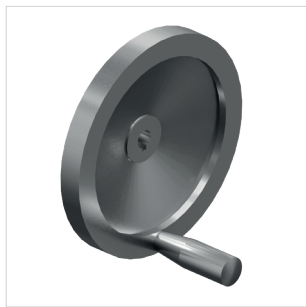


Fixing strips BFL

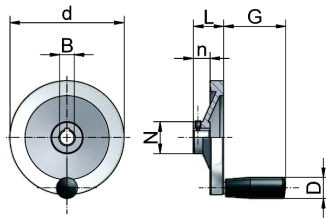


Code	a	b	c	d	e	f	g	h	i	j	k	l	kg
GSZ-2-BFL	32	16	29,5	45,5	7,5	90	6,6	14	10	38	11	6,4	0,16
GSZ-5-BFL	39	21	41	59	10	120	9	20	10	52	14	6	0,32
GSZ-10-BFL	49	29	50	70	10	140	9	20	14	63	14	6	0,5
GSZ-25-BFL	64	42	64	86	10	170	11	25	12	81	17	7,5	0,75
GSZ-50-BFL	87	63	90	114	13	230	13	30	20	115	19	7	2
GSZ-100-BFL	100	66	101	135	17	270	18	40	25	131	26	11	3,7
GSZ-150-BFL	100	70	115	145	20	300	22	50	35	155	33	13	6,75

Material: steel, corrosion-resistant / GSZ-2-BFL: stainless steel
Delivery incl. screws



Handwheel HR

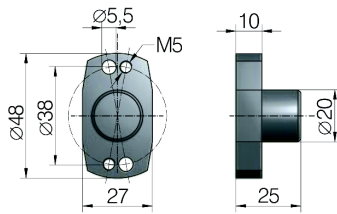


Code	d	N	b	n	L	G	D	B H7 pilot hole	B H7 with nut	kg
HR-080	80	26	13	16	26	42,5	18	8	9/11	0,16
HR-125	125	31	15	18	33	67,5	23	6	11/14	0,3
HR-160	160	36	18	20	39	82,5	26	6	14/16/19	0,5
HR-200	200	42	20,5	24	45	82,5	26	16	16/19/20	1
HR-250	250	48	23	28	51	92,5	28	22	20/25/28	1,3

Material: aluminium, plastic (handle)
Design: No more than max. 50 - 60 N force should be required at the handle.

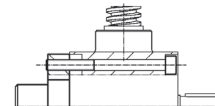


Protective cap GSZ-2-SK

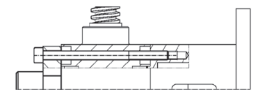


Code	D	d	E	F	Screws DIN 912	kg
GSZ-2-SK	20	5,5/M5	25	10	M5x55	0,05

Incl. screws
Material: hard anodised aluminium.



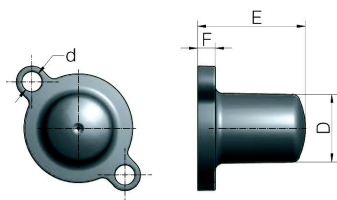
M5x55
Screws are included with the protective cap



M5x77
Screws are included with the motor flange / bevel gearbox



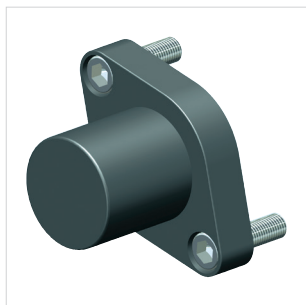
Protective cap SK



incl. screws

Code	D	d	E	F	Screws DIN 912	kg
ZE-5-SK	25	7	32	8	M6x16	0,02
ZE-10-SK	30	9	32	8	M8x16	0,04
ZE-25-SK	31	9	49	8	M8x16	0,05
ZE-35-SK	35	11	54	8	M10x20	0,07
ZE-50-SK	35	11	55	8	M10x20	0,08
ZE-100/150-SK	46	13,5	74	8	M12x25	0,13
ZE-200-SK	60	17,5	82	25	M16x25	0,50
ZE-250-SK	60	17,5	82	25	M16x30	0,7
ZE-350-SK	75	20	85	30	M18x30	0,9
Z-500-SK	90	22	125	35	M20x40	1,2
Z-750-SK	110	22	122	28	M20x40	1,5
Z-1000-SK	100	26	142	30	M24x40	2,2

Incl. screws
Material: ZE-5 to ZE-200: PA6 GF15, up to 120°C, briefly 180°C.
Material: Z-250 to Z-1000: POM, up to 100°C, briefly 140°C.



Suitable for screw jacks ZE, Z, GSZ and KSZ-H bevel gearbox (see chapter 5 for KSZ-H).

CAUTION
For bevel gearboxes, the protective cap must be the same size as the motor flange.

ZE-200 to Z-1000