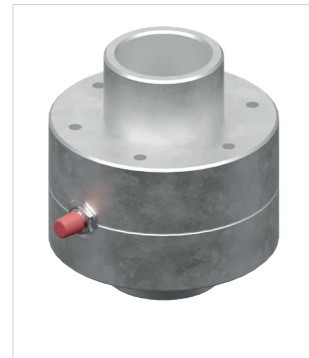
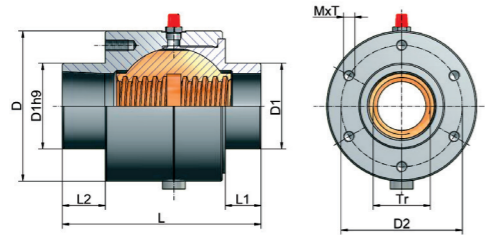


# Accessories

## R Nut | rotating version

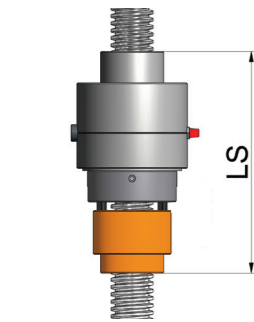


Self-aligning nut PM



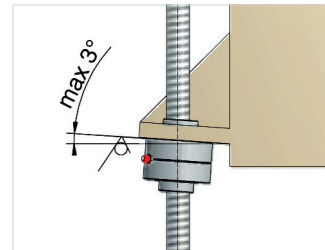
### Technical data

Trapezoidal screw: DIN 103, quality 7H, right-handed  
 Screwed grease nipple: Thread 1/8" / 1/4" ab Tr 40x7  
 Material: GG25 (Grey cast iron)  
 Housing: Rg7 (Bronze)  
 Spherical nut: is available for the self-aligning nut on request



Code	Thread Tr dxP	D	D1	D2	M x T	L	L1	L2	LS*	kg
ZE-5-PM	Tr18x4	52	29	40	M5x12	78	13	21	123	0,7
ZE-10-PM	Tr20x4	74	39	60	M6x12	83	13	24	128	1,5
ZE-25-PM	Tr30x6	88	46	70	M6x12	95	13	27	158	2,4
ZE-35/50-PM	Tr40x7	105	60	85	M8x16	129	15	30	212	5,1
ZE-100-PM	Tr55x9	148	85	120	M10x20	190	15	45	298	15,1
ZE-150-PM	Tr60x9	165	90	125	M12x24	210	15	45	330	21,9
ZE-250-PM	Tr80x16	225	120	170	M16x32	224	20	40	369	47
ZE-350-PM	Tr100x16	280	145	215	M20x40	275	20	40	455	94

\*Overall length PM incl. safety nut SIFA

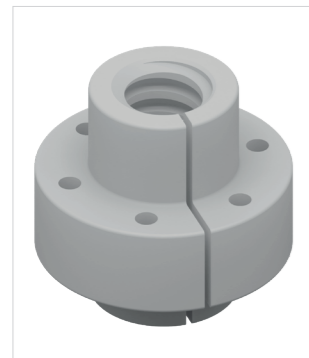


### Application

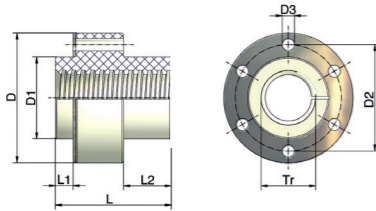
(Welded) fabrications often exhibit angular errors, which lead to rapid wear of the trapezoidal screw nuts. The self-aligning nut PM can compensate small angular errors on the attachment face up to maximum +/-3°. A large grease reservoir increases the maintenance intervals and extends the service life

### CAUTION

Self-aligning nuts cannot compensate parallelism errors between screws or between screws and guides. Take care to ensure precise alignment. The attachment faces for the gearboxes must therefore be exactly at right angles to the guides.



Greaseless nut FFDM



Code	Tr	D	D1 <sup>2)</sup>	D2	D3	L	L1	L2	kN max. load	kg
ZE-5-FFDM	Tr18x4	52	29	40	6	53	11	20	1	0,1
ZE-10-FFDM	Tr20x4	68	39	54	7	53	11	20	2	0,1
ZE-25-FFDM	Tr30x6	79	46	61	7	59	11	23	5	0,2
ZE-35/50-FFDM	Tr40x7	95	60	78	9	85	13	35	7	0,4

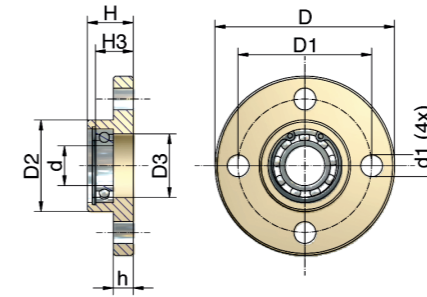
Nut material: plastic, high-performance polymer  
 Steel ring material: stainless steel  
 Quality: 7H DIN 103, right-handed  
 1) As approximate value, depending on the stroke speed and ambient temperature  
 2) Connection bore for D1 +0,2 mm for thermal expansion

# Accessories

## Opposed bearing plate | rotating version



Opposed bearing plate GLP



The opposed bearing plate increases the smoothness of operation and the resistance of the screw to buckling. Allow 5 mm at the end of the screw for length compensation. The ball bearing is already mounted on delivery.

Code	ØD	ØD1	ØD2	ØD3	Ød	Ød1	h	H	H3	Bearing	Si-Ring	kg
GSZ-2-GLP	50	40	26	19	10	5,5	6	16	12	61900.2RS	J 22	0,05
ZE-5-GLP	65	48	29	20	12	9	7	20	13	61901.2RS	J 24	0,2
ZE-10-GLP	80	60	39	28	15	11	8	21	17	6002.2RS	J 32	0,5
ZE-25-GLP	90	67	46	32	20	11	10	23	19	61904.2RS	J 37	0,5
ZE-35/50-GLP	110	85	60	42	25	13	15	30	22	6005.2RS	J 47	1,1
ZE-100-GLP	150	117	85	60	40	17	20	50	35	6008.2RS	J 68	2,9
ZE-150-GLP	170	130	90	68	45	21	25	50	31	6009.2RS	J 75	4
ZE-200-GLP	200	155	110	83	50	26	30	60	50	2x6210.2RS	J 90	7,2
ZE-250-GLP	210	165	120	85	60	26	30	60	50	2x6012.2RS	J 95	6,9
ZE-350-GLP	265	205	145	110	80	27	32	65	54	2x6016.2RS	J125	11,5
Z-500-GLP	310	240	170	130	95	38	40	100	60	2x6019.2RS	J145	24
Z-750-GLP	350	280	200	168	100	6x32	40	100	83	2x6020.2RS	J180	32

Material: steel, corrosion-resistant; up to ZE-200 stainless bearings