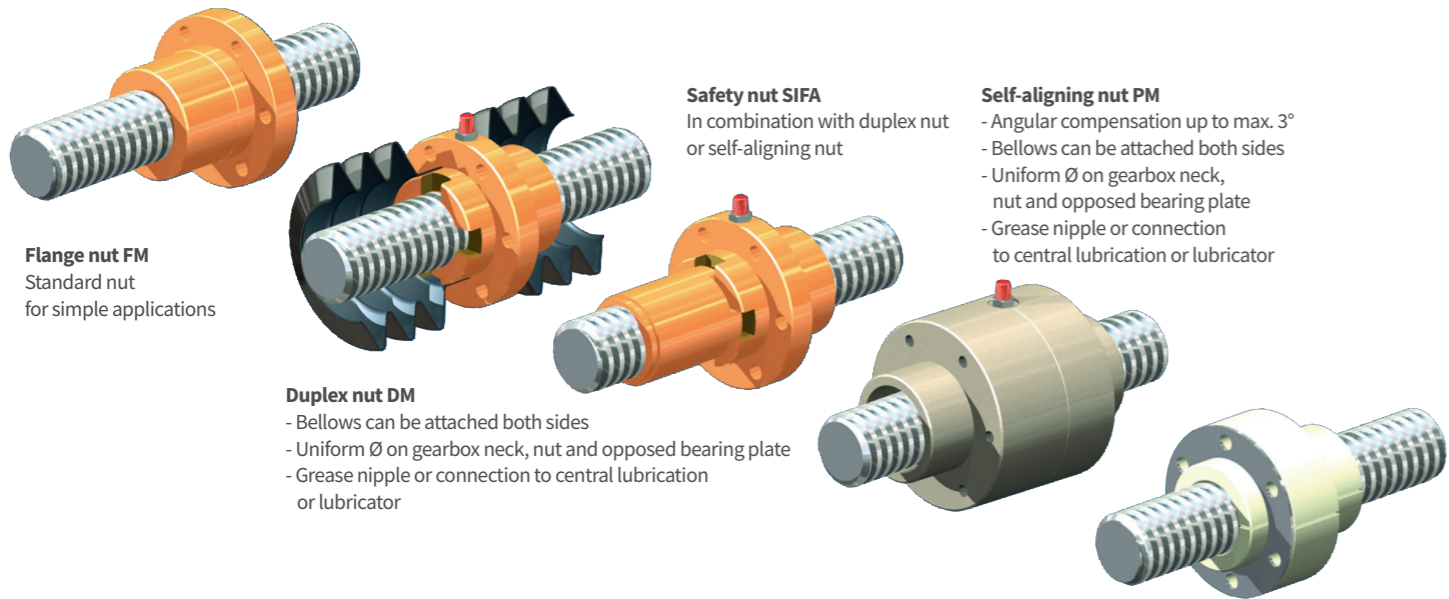


# Accessories

## Nuts | rotating version



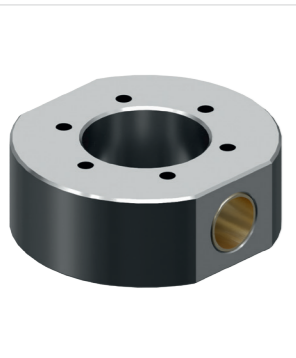
**Flange nut FM**  
Standard nut for simple applications

**Duplex nut DM**  
- Bellows can be attached both sides  
- Uniform Ø on gearbox neck, nut and opposed bearing plate  
- Grease nipple or connection to central lubrication or lubricator

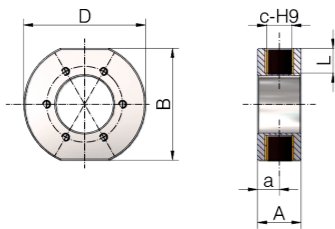
**Safety nut SIFA**  
In combination with duplex nut or self-aligning nut

**Self-aligning nut PM**  
- Angular compensation up to max. 3°  
- Bellows can be attached both sides  
- Uniform Ø on gearbox neck, nut and opposed bearing plate  
- Grease nipple or connection to central lubrication or lubricator

**Greaseless nut FFDM**  
- Specially suitable for dry running (such as textiles, foodstuffs, chemicals,...)  
- Bellows can be attached both sides  
- Reinforced with a stainless steel washer

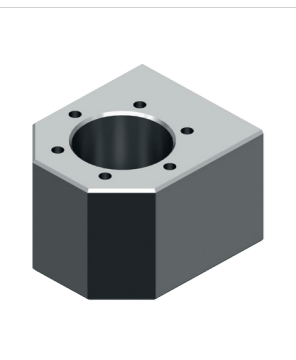
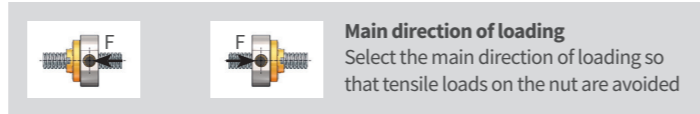


**Cardan adapters DMA for duplex nut DM**

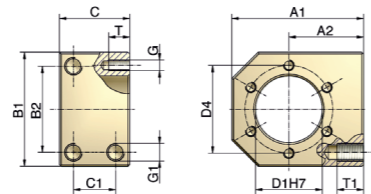


Code	B	D	c-H9	L	A	a	kg
ZE-5-DMA	72	78	16	15	30	15	1
ZE-10-DMA	72	78	16	15	30	15	0,9
ZE-25-DMA	90	98	20	20	36	18	1,4
ZE-35-DMA	100	116	28	15	46	23	2,3
ZE-50-DMA	100	116	30	15	46	23	2,3
ZE-100-DMA	140	150	40	25	60	30	4,8
ZE-150-DMA	145	160	50	25	76	38	6,8
ZE-200-DMA	175	192	50	25	80	40	10,3
ZE-250-DMA	185	206	60	30	90	45	12,7

Material: steel, corrosion-resistant; pivot bearing: Bronze, PTFE coated



**Driving flange TRMFL for flange nut FM**

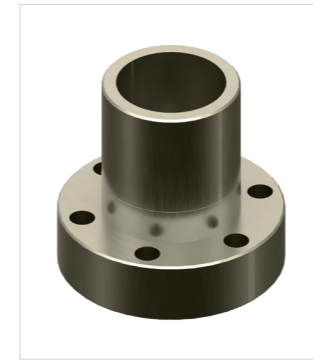


Code	für FM	A1	A2max <sup>1)</sup>	A2min <sup>1)</sup>	B1	B2	C	C1	G1xT	D1	D4	GxT	kg
TRMFL-18x4 <sup>2)</sup>	Tr18x4	60	35	25	50	34	40	24	M8x15	28	38	M5x10	0,7
TRMFL-20x4	Tr20x4	68	37,5	29	58	39	40	24	M8x15	32	45	M6x12	0,9
TRMFL-30x6	Tr30x6	75	42,5	32,5	65	49	40	24	M10x15	38	50	M6x12	1,1
TRMFL-40x7	Tr40x7	120	70	50	100	76	65	41	M14x25	63	78	M8x14	4,5

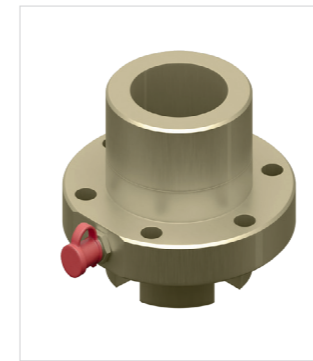
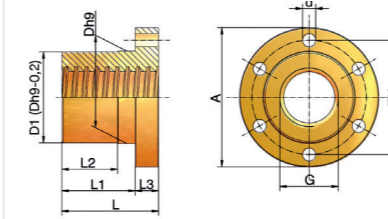
Material: steel, corrosion-resistant  
1) Supplied ex-works with size A2max! Can be machined by the customer to A2min.  
2) Also suitable for GSZ-2-FM (Tr 16x4)

# Accessories

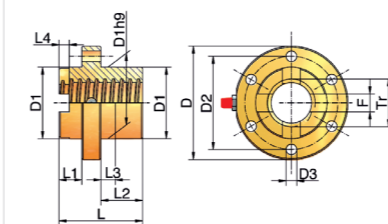
## Nuts | rotating version



**Flange nut FM**



**Duplex nut DM**



Code	G	D1*Dh9	TK	A	d (6x)	L	L1	L2	L3	kg
GSZ-2-FM	Tr16x4	28	38	48	6	35	23	15	12	0,2
ZE-5-FM	Tr18x4	28	38	48	6	35	23	15	12	0,2
ZE-10-FM	Tr20x4	32	45	55	7	44	32	24	12	0,3
ZE-25-FM	Tr30x6	38	50	62	7	46	32	24	14	0,4
ZE-35/50-FM	Tr40x7	63	78	95	9	66	50	38	16	1,7
ZE-100-FM	Tr55x9	85	108	130	11	90	70	54	20	4
ZE-150-FM	Tr60x9	90	116	140	13	100	75	54	25	5,5
ZE-200-FM	Tr70x12	110	143	175	17	120	90	60	30	10,2
ZE-250-FM	Tr80x16	120	153	185	17	130	95	65	35	14,3
ZE-350-FM	Tr100x16	145	189	230	23	150	115	75	40	20,4
Z-500-FM	Tr120x16	170	214	255	23	170	130	80	50	28,9
Z-750-FM	Tr140x20	200	252	289	23	210	160	100	60	48
Z-1000-FM	Tr160x20	250	300	350	26	260	200	120	70	96,2

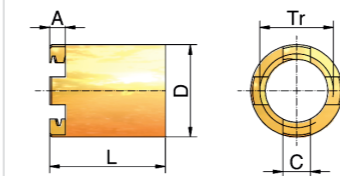
Material: 2.1090.01 (RG7-bronze)  
Quality: 7H DIN 103. Right-handed (left-handed, double pitch on request)  
\*D1=Dh9-0,2 mm

Code	Tr	D	D1	D2	D3	L	L1	L2	L3	L4	F	kg
GSZ-2-DM	Tr16x4	49	26	40*	5,5*	45	13	20	8	6	6	0,3
ZE-5-DM	Tr18x4	52	29	40	6	45	13	20	8	6	6	0,3
ZE-10-DM	Tr20x4	68	39	54	7	45	13	20	8	6	8	0,6
ZE-25-DM	Tr30x6	79	46	61	7	50	13	23	8	7	12	0,8
ZE-35/50-DM	Tr40x7	95	60	78	9	70	18	36	12	8,5	15	1,5
ZE-100-DM	Tr55x9	130	85	108	11	90	18	54	18	10	20	4,1
ZE-150-DM	Tr60x9	140	90	116	13	115	20	75	20	10	20	5,3
ZE-200-DM	Tr70x12	175	110	143	17	130	25	75	30	14	25	10,3
ZE-250-DM	Tr80x16	185	120	153	17	140	25	85	30	14	25	12,2
ZE-350-DM	Tr100x16	230	145	189	23	160	25	100	35	14	24	21,6
Z-500-DM	Tr120x16	255	170	214	23	180	30	110	40	14	30	30,5
Z-750-DM	Tr140x20	289	200	252	23	220	30	140	50	18	30	58,3
Z-1000-DM	Tr160x20	350	250	300	26	320	50	210	70	18	35	155

Material: 2.1090.01 (RG7-bronze); Quality: 7H DIN 103 right-handed (left-handed, double pitch on request); Threaded grease nipple, up to ZE-50 G1/8"; from ZE-100 G1/4"  
\*only 4 drill holes Ø 5,5mm



**Safety nut SIFA-R**



Code	Tr	A	C	D	L	kg
GSZ-2-SIFA-R	Tr16x4	6	6	22	28	0,05
ZE-5-SIFA-R	Tr18x4	6	6	24	28	0,1
ZE-10-SIFA-R	Tr20x4	6	8	28	42	0,1
ZE-25-SIFA-R	Tr30x6	7	12	38	47,5	0,2
ZE-35/50-SIFA-R	Tr40x7	8,5	15	50	67	0,5
ZE-100-SIFA-R	Tr55x9	10	20	65	87	1,1
ZE-150-SIFA-R	Tr60x9	10	20	70	100	1,2
ZE-200-SIFA-R	Tr70x12	14	25	95	110	3,8
ZE-250-SIFA-R	Tr80x16	14	25	100	115	3,3
ZE-350-SIFA-R	Tr100x16	14	24	120	115	4,07
Z-500-SIFA-R	Tr120x16	14	30	135	128	6,02
Z-750-SIFA-R	Tr140x20	18	30	170	151	13,8
Z-1000-SIFA-R	Tr160x20	18	35	190	186	19,8

Material: RG7