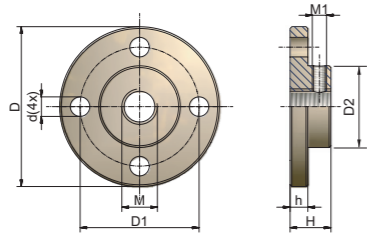


Accessories

Add-on component | For the translating version



Fixing flange BF

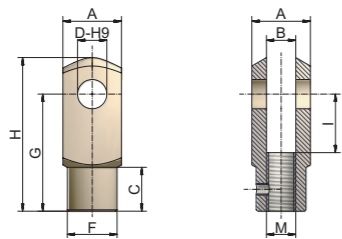


Code	D	D1	D2	M	d	h	H	M1	kg
GSZ-2-BF	50	40	26	M10	5,5	6	16	5	0,04
ZE-5-BF	65	48	29	M12	9	7	20	5	0,2
ZE-10-BF	80	60	38	M14	11	8	21	6	0,3
ZE-25-BF	90	67	46	M20	11	10	23	8	0,5
ZE-35/50-BF	110	85	60	M30	13	15	30	8	1,2
ZE-100-BF	150	117	85	M36	17	20	50	10	3,5
ZE-150-BF	170	130	90	M42x2	21	25	50	10	4,7
ZE-200-BF	200	155	110	M56x2	26	30	60	12	7,8
ZE-250-BF	210	165	120	M56x2	26	30	60	12	9,5
ZE-350-BF	260	205	145	M72x3	32	40	80	16	18,4
Z-500-BF	310	240	170	M100x3	38	40	120	16	30
Z-750-BF	340	265	200	M110x3	38	50	132	20	36

Material: steel, corrosion-resistant; Aluminium, hard anodised (GSZ-2-BF) incl. set screw



Forked end GK

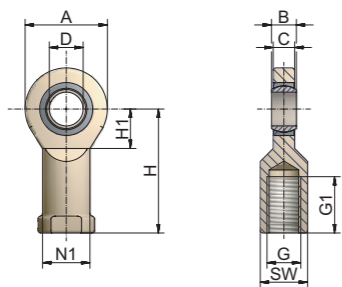


Code	A	B	C	D	M	F	G	H	I	kg
GSZ-2-GK	20	10	15	10	M10	18	40	52	20	0,1
ZE-5-GK	24	12	18	12	M12	20	48	62	24	0,2
ZE-10-GK	27	14	22	14	M14	24	56	72	28	0,2
ZE-25-GK	40	20	30	20	M20	34	80	105	40	0,7
ZE-35/50-GK	60	30	42	30	M30	52	120	160	60	2,5
ZE-100-GK	70	36	54	35	M36	60	144	188	72	3,7
ZE-150-GK	85	42	63	42	M42x2	70	168	232	84	5,3

Material: steel, galvanised (INOX on request) incl. bolt, splint and set screw



Rod end KGK



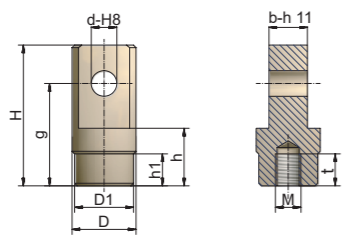
Code	A	B	C	D	G	G1	H	H1	SW	N1	kg
GSZ-2-KGK	31	14	12	10	M10	19	43	15	16	15	0,11
ZE-5-KGK	34	10	8,5	12	M12	23	50	17,5	18	17	0,1
ZE-10-KGK	40	12	10	15	M14	30	61	20	21	20	0,16
ZE-25-KGK	53	16	13	20	M20	40	77	27,5	30	27,5	0,32
ZE-35/50-KGK	73	22	19	30	M30	56	110	37	46	40	1,03
ZE-100-KGK	92	28	24	40	M36	65	142	46	60	52	2,1
ZE-150-KGK	112	35	31	50	M42x2	68	160	56	70	62	3,61
ZE-200-KGK	135	44	38	60	M56x2	70	175	73	75	70	5,6
ZE-250-KGK	160	49	43	70	M56x2	80	200	80	85	80	8,45

Larger sizes on request

Material: steel/steel, galvanised; steel/PTFE for GSZ-2-KGK incl. set screw; (INOX on request)
CAUTION: Use only with rotation protection! Larger sizes on request.



Pivot bearing end SLK

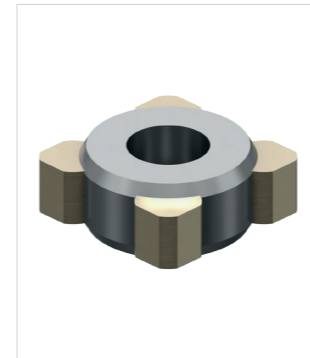


Code	H	D	D1	d	M	g	b	h	h1	t	kg
ZE-5-SLK	65	30	29	12	M12	48	18	25	20	22	0,3
ZE-10-SLK	80	40	39	14	M14	56	24	25	20	25	0,6
ZE-25-SLK	110	50	46	20	M20	80	30	45	25	25	1,2
ZE-35/50-SLK	130	65	60	30	M30	92	35	50	30	33	2,1
ZE-100-SLK	144	90	85	35	M36	108	40	65	40	55	4,4
ZE-150-SLK	210	100	90	50	M42x2	155	57	90	50	70	8
ZE-200-SLK	235	115	110	65	M56x2	165	70	85	45	63	12
ZE-250-SLK	260	125	120	80	M56x2	180	80	85	40	63	16
ZE-350-SLK	280	145	145	90	M72x3	195	100	105	-	83	24
Z-500-SLK	340	170	170	100	M100x3	245	120	150	-	120	38
Z-750-SLK	380	225	200	120	M110x3	270	130	155	80	133	68,5

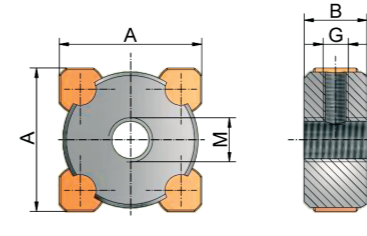
Material: steel, corrosion resistant incl. set screw

Accessories

Add-on component | For the translating version



Rotation protection VS



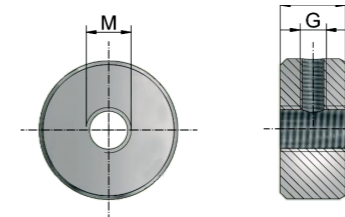
Rotation protection is required if the screw is not fixed to the load so that it cannot rotate, or is installed in combination with limit switches or the rod end KGK.

Code	A	B	G	M	kg
GSZ-2-VS*	31x21	15	Ø3	M10	0,01
ZE-5-VS*	31	15	M6	M12	0,1
ZE-10-VS	46	20	M8	M14	0,23
ZE-25-VS	46	20	M8	M20	0,23
ZE-35-VS	56	30	M8	M24	0,65
ZE-50-VS	84	30	M10	M30	1,27
ZE-100-VS	84	30	M10	M36	1,2
ZE-150-VS	114	30	M10	M48x2	2,15
ZE-200-VS	114	30	M10	M56x2	2,15
ZE-250-VS	114	30	M10	M64x3	2,15
ZE-350-VS	152	35	M16	M72x3	4,6
Z-500-VS	170	40	M16	M85x3	6,6
Z-750-VS	190	40	M16	M100x3	8
Z-1000-VS	208	40	M16	M100x3	10,2

Material: steel, bronze - *For ZE-5, the VS is made of solid bronze. GSZ-2-POM incl. set screw.



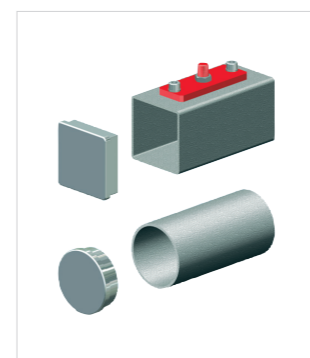
Escape protection AS



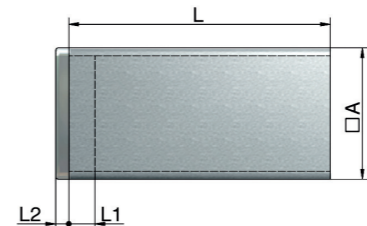
Escape protection prevents the screw being wound out of the gearbox. It is particularly recommended for ball screws. Do not rely on it as an operating travel stop.

Code	A	G	M	kg
GSZ-2-AS	15	M5	M10	0,01
ZE-5-AS	15	M6	M12	0,05
ZE-10-AS	20	M8	M14	0,16
ZE-25-AS	20	M8	M20	0,14
ZE-35-AS	30	M8	M24	0,4
ZE-50-AS	30	M10	M30	0,8
ZE-100-AS	30	M10	M36	0,74
ZE-150-AS	30	M12	M48x2	1,48
ZE-200-AS	30	M10	M56x2	1,49
ZE-250-AS	30	M12	M64x3	1,17
ZE-350-AS	35	M16	M72x3	2,87
Z-500-AS	40	M16	M85x3	3,86
Z-750-AS	40	M16	M100x3	6
Z-1000-AS	40	M16	M100x3	9,6

Material: steel, Incl. set screw.



Protective tube SRO with lid



Code	A	L1	L2	kg/m
GSZ-2-SRO	35x25	14	5	0,6
ZE-5-SRO	35	10	5	2,1
ZE-10-SRO	50	10	5	3,1
ZE-25-SRO	50	10	5	3,1
ZE-35-SRO	60	10	5	3,8
ZE-50-SRO	90	10	5	8,2
ZE-100-SRO	90	10	5	8,2
ZE-150-SRO	120	10	5	11,5
ZE-200-SRO	120	10	5	11,5
ZE-250-SRO	Ø 125 / □120	10	5	7,6 / 11,5
ZE-350-SRO	Ø 150 / □160	15	5	19,0 / 19,3
Z-500-SRO	Ø 180 / □180	15	5	22,0 / 27,0
Z-750-SRO	Ø 210 / □200	15	5	26,0 / 30,0
Z-1000-SRO	Ø 260 / □220	15	5	32,0 / 39,0

Material: steel, powder coated/painted. Aluminium, black anodised (GSZ-2-SRO)
Lid: Aluminium, corrosion resistant; PE, black (GSZ-2)
Incl. set screw.